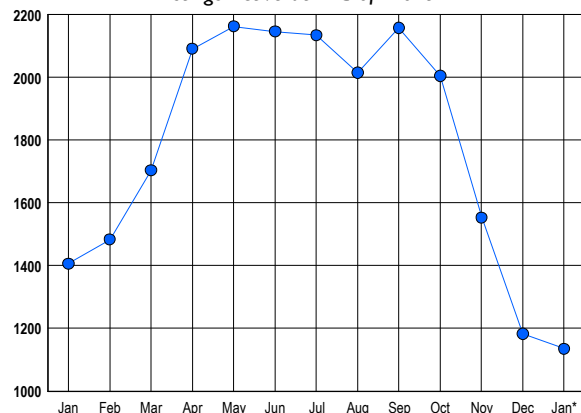


### LISTINGS

Prices Range	New This Month			Total Actives		
	2018	2017	% Change	2018	2017	% Change
0 - 149,999	1	1	0.0	13	12	8.3
150,000 - 199,999	4	12	-66.7	7	14	-50.0
200,000 - 299,999	66	85	-22.4	54	96	-43.8
300,000 - 399,999	118	135	-12.6	115	156	-26.3
400,000 - 499,999	129	96	34.4	178	169	5.3
500,000 - 599,999	70	79	-11.4	134	141	-5.0
600,000 - 699,999	56	71	-21.1	101	134	-24.6
700,000 - 799,999	58	52	11.5	94	97	-3.1
800,000 - 899,999	26	43	-39.5	53	79	-32.9
900,000 - 999,999	14	27	-48.1	35	55	-36.4
1,000,000 - 1,249,999	29	39	-25.6	65	100	-35.0
1,250,000 - 1,499,999	24	45	-46.7	78	103	-24.3
1,500,000 +	51	72	-29.2	208	250	-16.8
<b>TOTALS</b>	<b>646</b>	<b>757</b>	<b>-14.7</b>	<b>1135</b>	<b>1406</b>	<b>-19.3</b>

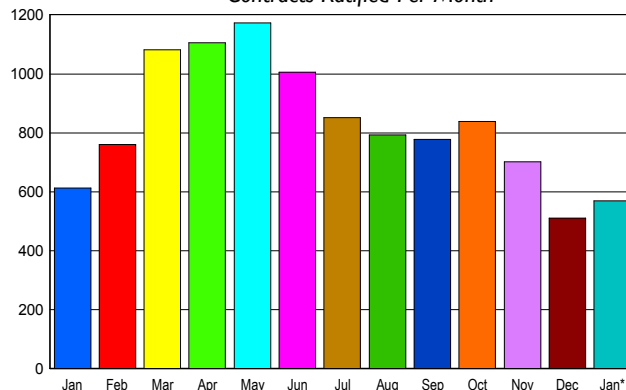
### INVENTORY TREND

Lists Active at End of Month



### SALES TREND

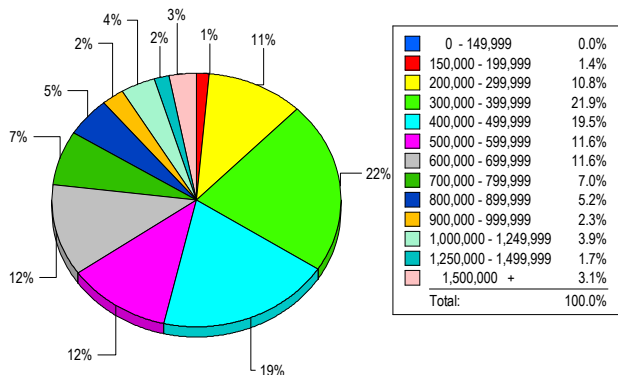
Contracts Ratified Per Month



### CONTRACTS

Price Range	New This Month			Year-To-Date		
	2018	2017	% Change	2018	2017	% Change
0 - 149,999	1	3	-66.7	1	3	-66.7
150,000 - 199,999	1	15	-93.3	1	15	-93.3
200,000 - 299,999	62	85	-27.1	62	85	-27.1
300,000 - 399,999	131	142	-7.7	131	142	-7.7
400,000 - 499,999	127	104	22.1	127	104	22.1
500,000 - 599,999	72	66	9.1	72	66	9.1
600,000 - 699,999	46	53	-13.2	46	53	-13.2
700,000 - 799,999	40	43	-7.0	40	43	-7.0
800,000 - 899,999	20	19	5.3	20	19	5.3
900,000 - 999,999	13	16	-18.8	13	16	-18.8
1,000,000 - 1,249,999	17	19	-10.5	17	19	-10.5
1,250,000 - 1,499,999	12	19	-36.8	12	19	-36.8
1,500,000 +	28	29	-3.4	28	29	-3.4
<b>TOTALS</b>	<b>570</b>	<b>613</b>	<b>-7.0</b>	<b>570</b>	<b>613</b>	<b>-7.0</b>

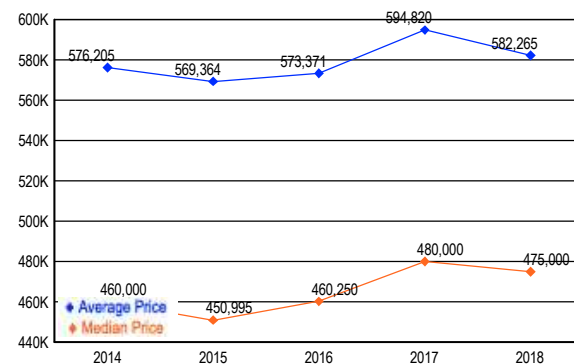
### MARKET BY PRICE RANGE



### SETTLEMENTS

Price Range	New This Month			Year-to-Date		
	2018	2017	% Change	2018	2017	% Change
0 - 149,999	0	0	0.0	0	0	0.0
150,000 - 199,999	7	11	-36.4	7	11	-36.4
200,000 - 299,999	52	81	-35.8	52	81	-35.8
300,000 - 399,999	106	134	-20.9	106	134	-20.9
400,000 - 499,999	94	94	0.0	94	94	0.0
500,000 - 599,999	56	60	-6.7	56	60	-6.7
600,000 - 699,999	56	52	7.7	56	52	7.7
700,000 - 799,999	34	32	6.3	34	32	6.3
800,000 - 899,999	25	16	56.3	25	16	56.3
900,000 - 999,999	11	11	0.0	11	11	0.0
1,000,000 - 1,249,999	19	19	0.0	19	19	0.0
1,250,000 - 1,499,999	8	10	-20.0	8	10	-20.0
1,500,000 +	15	12	25.0	15	12	25.0
<b>TOTALS</b>	<b>483</b>	<b>532</b>	<b>-9.2</b>	<b>483</b>	<b>532</b>	<b>-9.2</b>

### AVERAGE & MEDIAN PRICE



DATA SOURCE: Metropolitan Regional Information Systems, Inc. (MRIS)

NOTES: Properties not listed through this Multiple Listing Service are not reflected. The term "sales" represents ratified purchase contracts. Current year information is preliminary and subject to revision. Current year- to- date contract information may not equal the sum of the monthly contract totals reported in