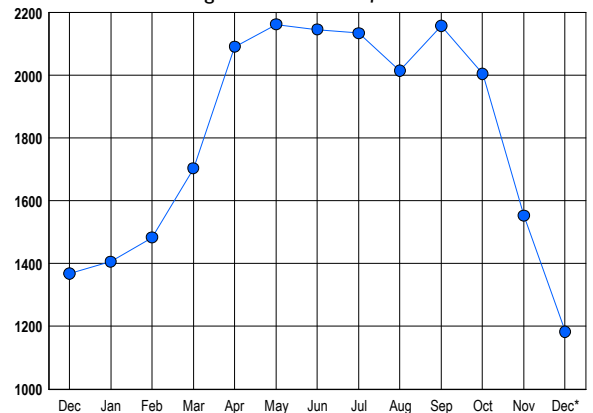


### LISTINGS

Prices Range	New This Month			Total Actives		
	2017	2016	% Change	2017	2016	% Change
0 - 149,999	0	3	-100.0	13	13	0.0
150,000 - 199,999	6	9	-33.3	6	15	-60.0
200,000 - 299,999	44	66	-33.3	60	100	-40.0
300,000 - 399,999	74	88	-15.9	130	166	-21.7
400,000 - 499,999	74	78	-5.1	191	180	6.1
500,000 - 599,999	55	54	1.9	157	135	16.3
600,000 - 699,999	35	41	-14.6	101	132	-23.5
700,000 - 799,999	28	28	0.0	87	97	-10.3
800,000 - 899,999	18	19	-5.3	51	58	-12.1
900,000 - 999,999	7	6	16.7	38	50	-24.0
1,000,000 - 1,249,999	16	22	-27.3	68	91	-25.3
1,250,000 - 1,499,999	11	17	-35.3	80	91	-12.1
1,500,000 +	19	27	-29.6	201	240	-16.3
<b>TOTALS</b>	<b>387</b>	<b>458</b>	<b>-15.5</b>	<b>1183</b>	<b>1368</b>	<b>-13.5</b>

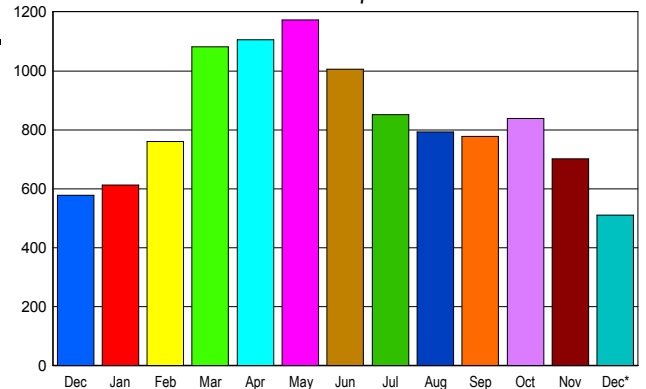
### INVENTORY TREND

Listsings Active at End of Month



### SALES TREND

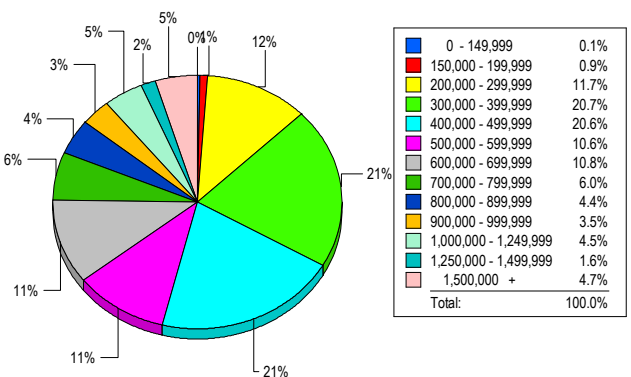
Contracts Ratified Per Month



### CONTRACTS

Price Range	New This Month			Year-To-Date		
	2017	2016	% Change	2017	2016	% Change
0 - 149,999	0	6	-100.0	9	40	-77.5
150,000 - 199,999	6	15	-60.0	114	179	-36.3
200,000 - 299,999	63	90	-30.0	1,077	1,325	-18.7
300,000 - 399,999	112	128	-12.5	2,043	2,165	-5.6
400,000 - 499,999	100	94	6.4	1,882	1,819	3.5
500,000 - 599,999	59	77	-23.4	1,179	1,188	-0.8
600,000 - 699,999	46	59	-22.0	996	989	0.7
700,000 - 799,999	38	30	26.7	661	616	7.3
800,000 - 899,999	28	19	47.4	481	472	1.9
900,000 - 999,999	12	15	-20.0	284	283	0.4
1,000,000 - 1,249,999	16	15	6.7	362	349	3.7
1,250,000 - 1,499,999	14	15	-6.7	281	278	1.1
1,500,000 +	17	15	13.3	351	286	22.7
<b>TOTALS</b>	<b>511</b>	<b>578</b>	<b>-11.6</b>	<b>9720</b>	<b>9989</b>	<b>-2.7</b>

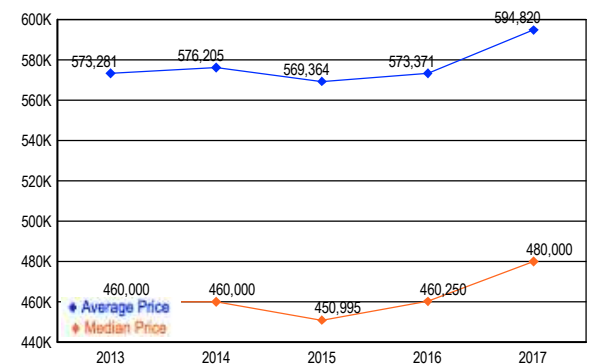
### MARKET BY PRICE RANGE



### SETTLEMENTS

Price Range	New This Month			Year-to-Date		
	2017	2016	% Change	2017	2016	% Change
0 - 149,999	1	3	-66.7	12	31	-61.3
150,000 - 199,999	6	10	-40.0	104	181	-42.5
200,000 - 299,999	80	93	-14.0	1,089	1,307	-16.7
300,000 - 399,999	142	165	-13.9	2,012	2,128	-5.5
400,000 - 499,999	141	143	-1.4	1,908	1,809	5.5
500,000 - 599,999	73	80	-8.8	1,160	1,145	1.3
600,000 - 699,999	74	71	4.2	1,018	960	6.0
700,000 - 799,999	41	42	-2.4	672	641	4.8
800,000 - 899,999	30	36	-16.7	471	451	4.4
900,000 - 999,999	24	23	4.3	295	297	-0.7
1,000,000 - 1,249,999	31	27	14.8	414	381	8.7
1,250,000 - 1,499,999	11	20	-45.0	255	249	2.4
1,500,000 +	32	26	23.1	326	278	17.3
<b>TOTALS</b>	<b>686</b>	<b>739</b>	<b>-7.2</b>	<b>9736</b>	<b>9858</b>	<b>-1.2</b>

### AVERAGE & MEDIAN PRICE



DATA SOURCE: Metropolitan Regional Information Systems, Inc. (MRIS)

NOTES: Properties not listed through this Multiple Listing Service are not reflected. The term "sales" represents ratified purchase contracts. Current year information is preliminary and subject to revision. Current year- to- date contract information may not equal the sum of the monthly contract totals reported in