

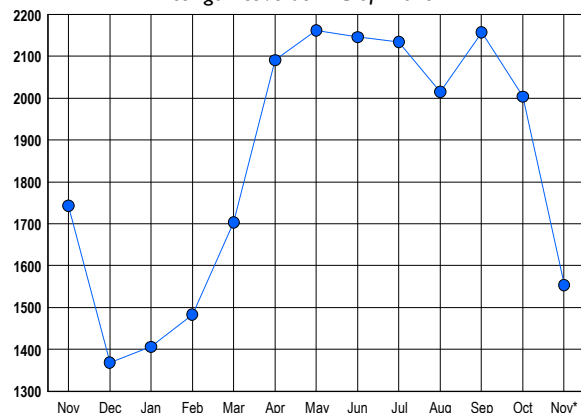


## LISTINGS

Prices Range	New This Month			Total Actives		
	2017	2016	% Change	2017	2016	% Change
0 - 149,999	1	1	0.0	12	15	-20.0
150,000 - 199,999	6	8	-25.0	6	16	-62.5
200,000 - 299,999	72	81	-11.1	84	122	-31.1
300,000 - 399,999	132	129	2.3	184	224	-17.9
400,000 - 499,999	142	113	25.7	246	229	7.4
500,000 - 599,999	80	79	1.3	189	183	3.3
600,000 - 699,999	62	53	17.0	145	191	-24.1
700,000 - 799,999	40	40	0.0	115	131	-12.2
800,000 - 899,999	35	25	40.0	79	77	2.6
900,000 - 999,999	21	32	-34.4	61	64	-4.7
1,000,000 - 1,249,999	17	26	-34.6	91	100	-9.0
1,250,000 - 1,499,999	20	28	-28.6	100	116	-13.8
1,500,000 +	27	50	-46.0	241	275	-12.4
<b>TOTALS</b>	<b>655</b>	<b>665</b>	<b>-1.5</b>	<b>1553</b>	<b>1743</b>	<b>-10.9</b>

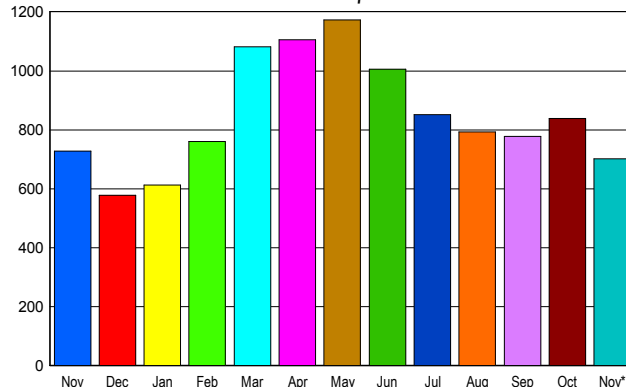
## INVENTORY TREND

Lists Active at End of Month



## SALES TREND

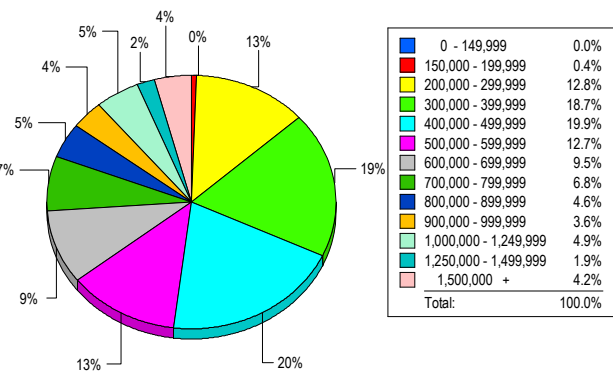
Contracts Ratified Per Month



## CONTRACTS

Price Range	New This Month			Year-To-Date		
	2017	2016	% Change	2017	2016	% Change
0 - 149,999	1	2	-50.0	9	34	-73.5
150,000 - 199,999	5	10	-50.0	108	166	-34.9
200,000 - 299,999	86	109	-21.1	1,022	1,253	-18.4
300,000 - 399,999	167	184	-9.2	1,945	2,053	-5.3
400,000 - 499,999	147	144	2.1	1,787	1,733	3.1
500,000 - 599,999	77	78	-1.3	1,120	1,112	0.7
600,000 - 699,999	68	54	25.9	951	932	2.0
700,000 - 799,999	41	31	32.3	623	585	6.5
800,000 - 899,999	34	31	9.7	454	455	-0.2
900,000 - 999,999	21	26	-19.2	273	272	0.4
1,000,000 - 1,249,999	15	21	-28.6	346	335	3.3
1,250,000 - 1,499,999	8	20	-60.0	267	264	1.1
1,500,000 +	31	18	72.2	335	271	23.6
<b>TOTALS</b>	<b>701</b>	<b>728</b>	<b>-3.7</b>	<b>9240</b>	<b>9465</b>	<b>-2.4</b>

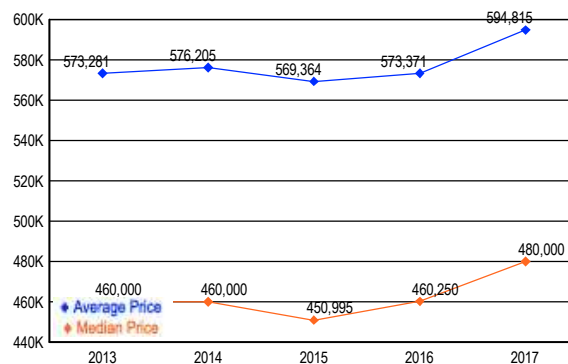
## MARKET BY PRICE RANGE



## SETTLEMENTS

Price Range	New This Month			Year-to-Date		
	2017	2016	% Change	2017	2016	% Change
0 - 149,999	0	2	-100.0	11	28	-60.7
150,000 - 199,999	3	12	-75.0	98	170	-42.4
200,000 - 299,999	92	95	-3.2	1,005	1,213	-17.1
300,000 - 399,999	134	171	-21.6	1,867	1,954	-4.5
400,000 - 499,999	143	143	0.0	1,764	1,660	6.3
500,000 - 599,999	91	63	44.4	1,082	1,064	1.7
600,000 - 699,999	68	74	-8.1	941	885	6.3
700,000 - 799,999	49	43	14.0	627	598	4.8
800,000 - 899,999	33	36	-8.3	441	415	6.3
900,000 - 999,999	26	16	62.5	271	274	-1.1
1,000,000 - 1,249,999	35	24	45.8	382	354	7.9
1,250,000 - 1,499,999	14	11	27.3	244	229	6.6
1,500,000 +	30	24	25.0	293	252	16.3
<b>TOTALS</b>	<b>718</b>	<b>714</b>	<b>0.6</b>	<b>9026</b>	<b>9096</b>	<b>-0.8</b>

## AVERAGE & MEDIAN PRICE



DATA SOURCE: Metropolitan Regional Information Systems, Inc. (MRIS)

NOTES: Properties not listed through this Multiple Listing Service are not reflected. The term "sales" represents ratified purchase contracts. Current year information is preliminary and subject to revision. Current year- to- date contract information may not equal the sum of the monthly contract totals reported in