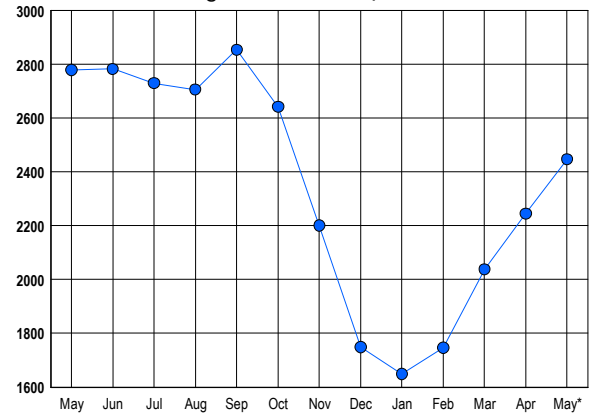


## LISTINGS

Prices Range	New This Month			Total Actives		
	2016	2015	% Change	2016	2015	% Change
0 - 149,999	3	3	0.0	16	13	23.1
150,000 - 199,999	11	22	-50.0	19	26	-26.9
200,000 - 299,999	167	160	4.4	161	229	-29.7
300,000 - 399,999	262	306	-14.4	353	438	-19.4
400,000 - 499,999	254	296	-14.2	368	426	-13.6
500,000 - 599,999	193	196	-1.5	260	314	-17.2
600,000 - 699,999	164	174	-5.7	266	286	-7.0
700,000 - 799,999	104	115	-9.6	185	217	-14.7
800,000 - 899,999	70	75	-6.7	128	127	0.8
900,000 - 999,999	40	65	-38.5	84	104	-19.2
1,000,000 - 1,249,999	63	73	-13.7	142	148	-4.1
1,250,000 - 1,499,999	57	71	-19.7	160	146	9.6
1,500,000 +	66	98	-32.7	305	305	0.0
<b>TOTALS</b>	<b>1454</b>	<b>1654</b>	<b>-12.1</b>	<b>2447</b>	<b>2779</b>	<b>-11.9</b>

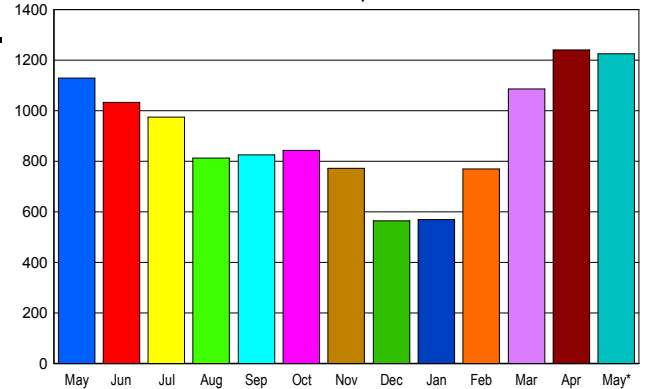
## INVENTORY TREND

Listings Active at End of Month



## SALES TREND

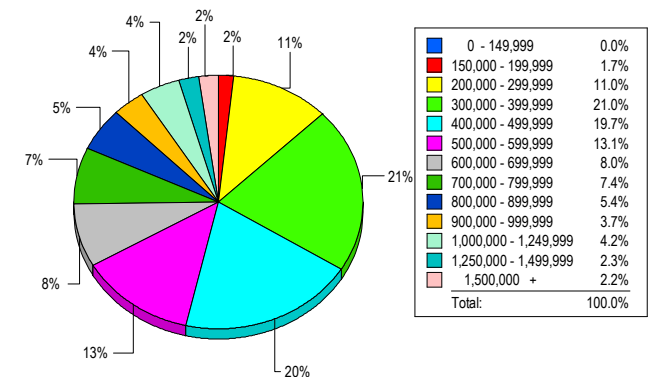
Contracts Ratified Per Month



## CONTRACTS

Price Range	New This Month			Year-To-Date		
	2016	2015	% Change	2016	2015	% Change
0 - 149,999	5	2	150.0	18	11	63.6
150,000 - 199,999	29	23	26.1	97	118	-17.8
200,000 - 299,999	175	156	12.2	641	616	4.1
300,000 - 399,999	219	240	-8.8	962	964	-0.2
400,000 - 499,999	216	203	6.4	833	778	7.1
500,000 - 599,999	153	123	24.4	561	502	11.8
600,000 - 699,999	136	115	18.3	454	392	15.8
700,000 - 799,999	73	74	-1.4	292	297	-1.7
800,000 - 899,999	64	48	33.3	232	190	22.1
900,000 - 999,999	39	34	14.7	147	124	18.5
1,000,000 - 1,249,999	42	35	20.0	171	147	16.3
1,250,000 - 1,499,999	41	47	-12.8	147	129	14.0
1,500,000 +	34	31	9.7	133	142	-6.3
<b>TOTALS</b>	<b>1226</b>	<b>1131</b>	<b>8.4</b>	<b>4688</b>	<b>4410</b>	<b>6.3</b>

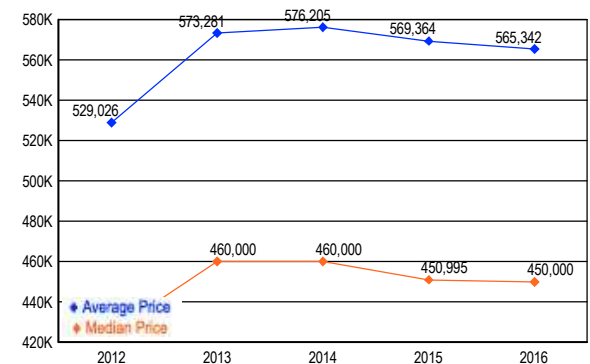
## MARKET BY PRICE RANGE



## SETTLEMENTS

Price Range	New This Month			Year-to-Date		
	2016	2015	% Change	2016	2015	% Change
0 - 149,999	0	2	-100.0	15	12	25.0
150,000 - 199,999	18	20	-10.0	77	90	-14.4
200,000 - 299,999	118	119	-0.8	519	466	11.4
300,000 - 399,999	225	210	7.1	803	751	6.9
400,000 - 499,999	211	173	22.0	638	594	7.4
500,000 - 599,999	140	115	21.7	414	364	13.7
600,000 - 699,999	86	97	-11.3	312	283	10.2
700,000 - 799,999	79	72	9.7	228	219	4.1
800,000 - 899,999	58	45	28.9	154	141	9.2
900,000 - 999,999	40	23	73.9	115	83	38.6
1,000,000 - 1,249,999	45	35	28.6	143	113	26.5
1,250,000 - 1,499,999	25	23	8.7	86	85	1.2
1,500,000 +	24	27	-11.1	99	94	5.3
<b>TOTALS</b>	<b>1069</b>	<b>961</b>	<b>11.2</b>	<b>3603</b>	<b>3295</b>	<b>9.3</b>

## AVERAGE & MEDIAN PRICE



DATA SOURCE: Metropolitan Regional Information Systems, Inc. (MRIS)

NOTES: Properties not listed through this Multiple Listing Service are not reflected. The term "sales" represents ratified purchase contracts. Current year information is preliminary and subject to revision. Current year- to- date contract information may not equal the sum of the monthly contract totals reported in