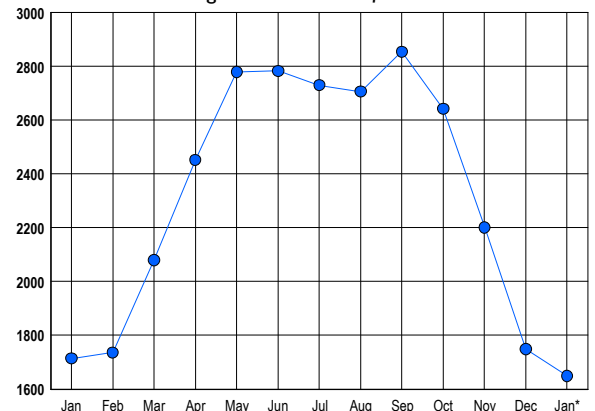


### LISTINGS

Prices Range	New This Month			Total Actives		
	2016	2015	% Change	2016	2015	% Change
0 - 149,999	3	1	200.0	17	13	30.8
150,000 - 199,999	16	24	-33.3	32	32	0.0
200,000 - 299,999	85	94	-9.6	159	194	-18.0
300,000 - 399,999	119	139	-14.4	250	290	-13.8
400,000 - 499,999	110	124	-11.3	237	283	-16.3
500,000 - 599,999	51	83	-38.6	167	180	-7.2
600,000 - 699,999	78	52	50.0	149	147	1.4
700,000 - 799,999	49	54	-9.3	128	125	2.4
800,000 - 899,999	24	25	-4.0	82	72	13.9
900,000 - 999,999	16	18	-11.1	62	42	47.6
1,000,000 - 1,249,999	25	20	25.0	82	76	7.9
1,250,000 - 1,499,999	26	27	-3.7	76	61	24.6
1,500,000 +	41	41	0.0	208	199	4.5
<b>TOTALS</b>	<b>643</b>	<b>702</b>	<b>-8.4</b>	<b>1649</b>	<b>1714</b>	<b>-3.8</b>

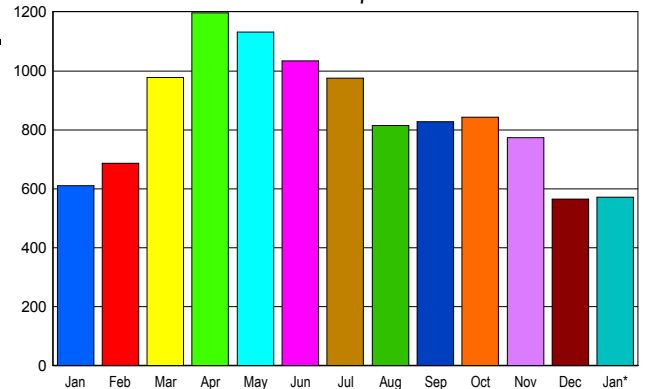
### INVENTORY TREND

Listings Active at End of Month



### SALES TREND

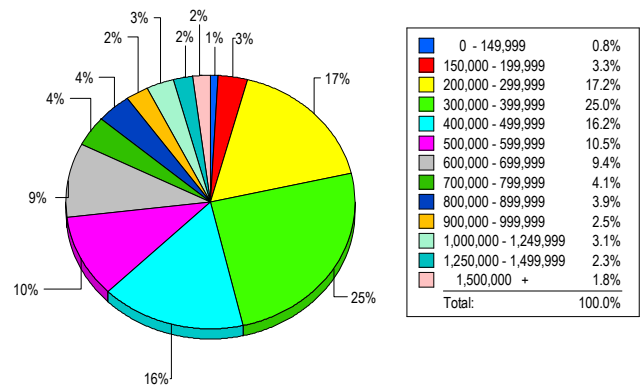
Contracts Ratified Per Month



### CONTRACTS

Price Range	New This Month			Year-To-Date		
	2016	2015	% Change	2016	2015	% Change
0 - 149,999	5	4	25.0	5	4	25.0
150,000 - 199,999	21	28	-25.0	21	28	-25.0
200,000 - 299,999	115	91	26.4	115	91	26.4
300,000 - 399,999	132	148	-10.8	132	148	-10.8
400,000 - 499,999	88	113	-22.1	88	113	-22.1
500,000 - 599,999	56	65	-13.8	56	65	-13.8
600,000 - 699,999	54	44	22.7	54	44	22.7
700,000 - 799,999	26	36	-27.8	26	36	-27.8
800,000 - 899,999	16	19	-15.8	16	19	-15.8
900,000 - 999,999	13	12	8.3	13	12	8.3
1,000,000 - 1,249,999	13	19	-31.6	13	19	-31.6
1,250,000 - 1,499,999	17	12	41.7	17	12	41.7
1,500,000 +	15	19	-21.1	15	19	-21.1
<b>TOTALS</b>	<b>571</b>	<b>610</b>	<b>-6.4</b>	<b>571</b>	<b>610</b>	<b>-6.4</b>

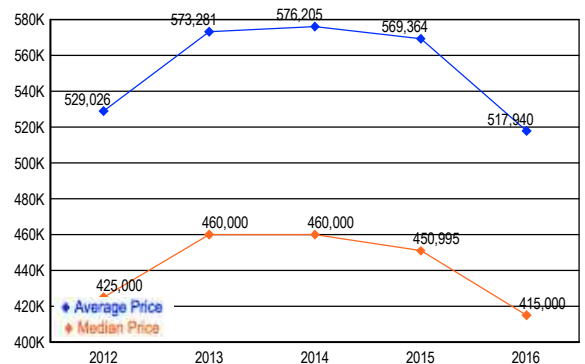
### MARKET BY PRICE RANGE



### SETTLEMENTS

Price Range	New This Month			Year-to-Date		
	2016	2015	% Change	2016	2015	% Change
0 - 149,999	4	3	33.3	4	3	33.3
150,000 - 199,999	16	10	60.0	16	10	60.0
200,000 - 299,999	84	75	12.0	84	75	12.0
300,000 - 399,999	122	104	17.3	122	104	17.3
400,000 - 499,999	79	85	-7.1	79	85	-7.1
500,000 - 599,999	51	40	27.5	51	40	27.5
600,000 - 699,999	46	37	24.3	46	37	24.3
700,000 - 799,999	20	24	-16.7	20	24	-16.7
800,000 - 899,999	19	18	5.6	19	18	5.6
900,000 - 999,999	12	9	33.3	12	9	33.3
1,000,000 - 1,249,999	15	9	66.7	15	9	66.7
1,250,000 - 1,499,999	11	11	0.0	11	11	0.0
1,500,000 +	9	13	-30.8	9	13	-30.8
<b>TOTALS</b>	<b>488</b>	<b>438</b>	<b>11.4</b>	<b>488</b>	<b>438</b>	<b>11.4</b>

### AVERAGE & MEDIAN PRICE



DATA SOURCE: Metropolitan Regional Information Systems, Inc. (MRIS)

NOTES: Properties not listed through this Multiple Listing Service are not reflected. The term "sales" represents ratified purchase contracts. Current year information is preliminary and subject to revision. Current year-to-date contract information may not equal the sum of the monthly contract totals reported in