

MONTGOMERY COUNTY Residential Market Report



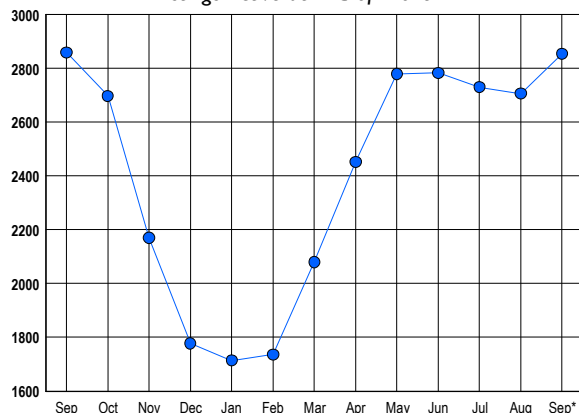
HOUSING REPORT Single Family Homes September 2015

LISTINGS

Prices Range	New This Month			Total Actives		
	2015	2014	% Change	2015	2014	% Change
0 - 149,999	7	4	75.0	14	14	0.0
150,000 - 199,999	21	18	16.7	52	35	48.6
200,000 - 299,999	150	127	18.1	271	245	10.6
300,000 - 399,999	248	250	-0.8	468	515	-9.1
400,000 - 499,999	202	232	-12.9	431	455	-5.3
500,000 - 599,999	149	148	0.7	293	333	-12.0
600,000 - 699,999	112	122	-8.2	275	290	-5.2
700,000 - 799,999	99	95	4.2	228	193	18.1
800,000 - 899,999	64	53	20.8	142	124	14.5
900,000 - 999,999	46	36	27.8	108	85	27.1
1,000,000 - 1,249,999	75	57	31.6	151	128	18.0
1,250,000 - 1,499,999	54	56	-3.6	134	127	5.5
1,500,000 +	93	98	-5.1	287	315	-8.9
TOTALS	1320	1296	1.9	2854	2859	-0.2

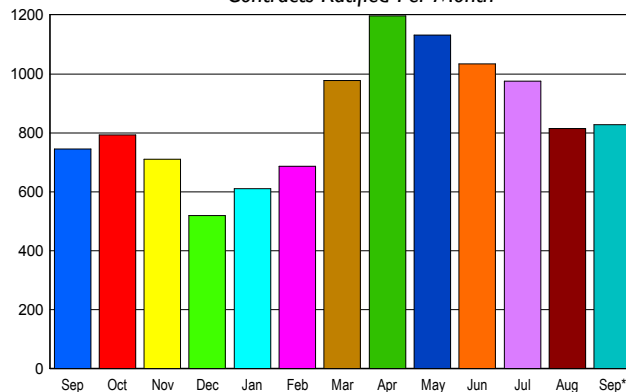
INVENTORY TREND

Listings Active at End of Month



SALES TREND

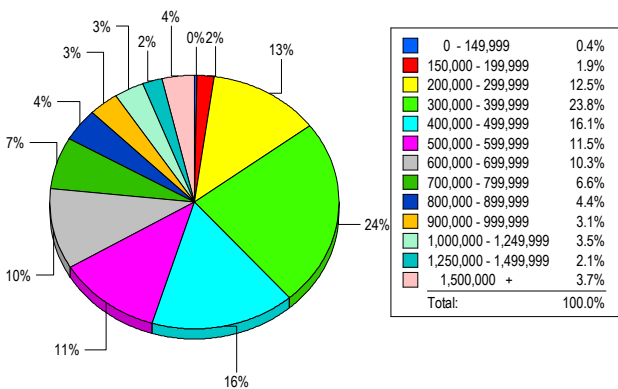
Contracts Ratified Per Month



CONTRACTS

Price Range	New This Month			Year-To-Date		
	2015	2014	% Change	2015	2014	% Change
0 - 149,999	5	3	66.7	18	16	12.5
150,000 - 199,999	18	26	-30.8	191	151	26.5
200,000 - 299,999	121	115	5.2	1,068	1,016	5.1
300,000 - 399,999	185	170	8.8	1,718	1,449	18.6
400,000 - 499,999	149	121	23.1	1,353	1,076	25.7
500,000 - 599,999	107	84	27.4	872	748	16.6
600,000 - 699,999	82	66	24.2	733	691	6.1
700,000 - 799,999	48	51	-5.9	486	490	-0.8
800,000 - 899,999	28	26	7.7	331	307	7.8
900,000 - 999,999	18	18	0.0	223	201	10.9
1,000,000 - 1,249,999	29	30	-3.3	271	273	-0.7
1,250,000 - 1,499,999	19	20	-5.0	218	187	16.6
1,500,000 +	18	14	28.6	243	200	21.5
TOTALS	827	744	11.2	7725	6805	13.5

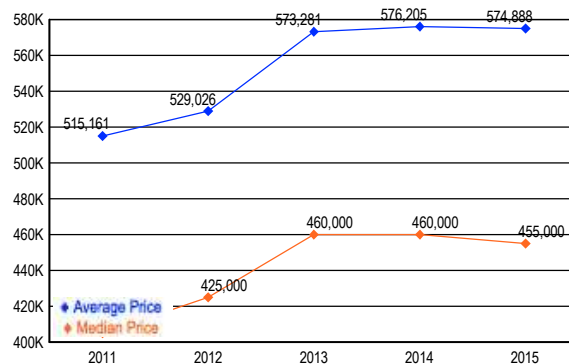
MARKET BY PRICE RANGE



SETTLEMENTS

Price Range	New This Month			Year-to-Date		
	2015	2014	% Change	2015	2014	% Change
0 - 149,999	3	4	-25.0	26	23	13.0
150,000 - 199,999	15	11	36.4	166	129	28.7
200,000 - 299,999	97	100	-3.0	968	908	6.6
300,000 - 399,999	184	163	12.9	1,601	1,342	19.3
400,000 - 499,999	125	123	1.6	1,240	1,001	23.9
500,000 - 599,999	89	70	27.1	784	711	10.3
600,000 - 699,999	80	62	29.0	654	646	1.2
700,000 - 799,999	51	38	34.2	455	453	0.4
800,000 - 899,999	34	27	25.9	334	302	10.6
900,000 - 999,999	24	13	84.6	215	187	15.0
1,000,000 - 1,249,999	27	34	-20.6	278	273	1.8
1,250,000 - 1,499,999	16	16	0.0	197	165	19.4
1,500,000 +	29	26	11.5	226	195	15.9
TOTALS	774	687	12.7	7144	6335	12.8

AVERAGE & MEDIAN PRICE



DATA SOURCE: Metropolitan Regional Information Systems, Inc. (MRIS)

NOTES: Properties not listed through this Multiple Listing Service are not reflected. The term "sales" represents ratified purchase contracts. Current year information is preliminary and subject to revision. Current year- to- date contract information may not equal the sum of the monthly contract totals reported in