

MONTGOMERY COUNTY

Residential Market Report



HOUSING REPORT

CONDO & COOPS

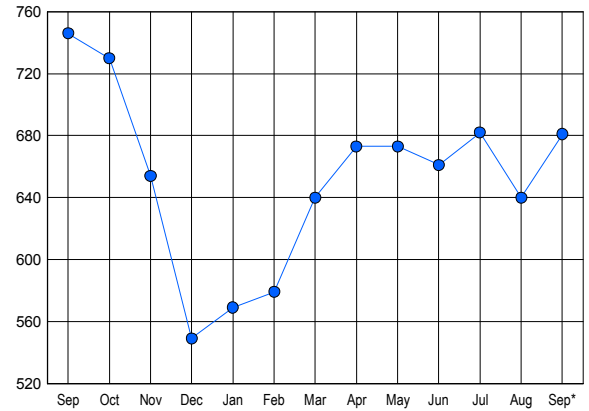
September 2016

LISTINGS

Price Range	New This Month			Total Actives		
	2016	2015	% Change	2016	2015	% Change
0 - 149,999	50	61	-18.0	89	131	-32.1
150,000 - 199,999	66	75	-12.0	111	147	-24.5
200,000 - 299,999	124	111	11.7	209	211	-0.9
300,000 - 399,999	74	67	10.4	108	135	-20.0
400,000 - 499,999	33	21	57.1	60	46	30.4
500,000 - 599,999	19	14	35.7	41	30	36.7
600,000 - 699,999	7	5	40.0	17	10	70.0
700,000 - 799,999	7	6	16.7	6	10	-40.0
800,000 - 899,999	4	4	0.0	6	6	0.0
900,000 - 999,999	2	0	200.0	2	3	-33.3
1,000,000 - 1,249,999	3	1	200.0	5	2	150.0
1,250,000 - 1,499,999	2	0	200.0	7	2	250.0
1,500,000 +	10	2	400.0	20	13	53.8
TOTALS	401	367	9.3	681	746	-8.7

INVENTORY TREND

Listings Active at End of Month

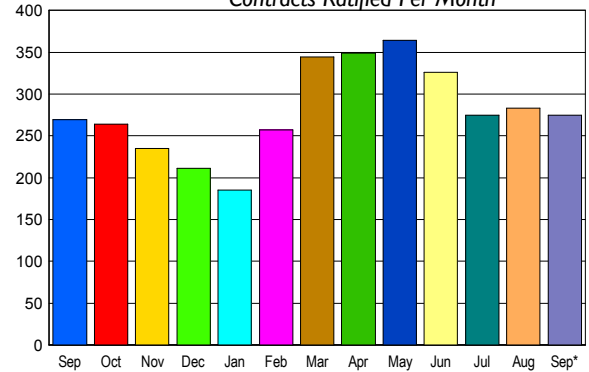


CONTRACTS

Price Range	New This Month			Year-To-Date		
	2016	2015	% Change	2016	2015	% Change
0 - 149,999	50	77	-35.1	491	523	-6.1
150,000 - 199,999	50	53	-5.7	487	457	6.6
200,000 - 299,999	78	72	8.3	709	647	9.6
300,000 - 399,999	55	37	48.6	393	363	8.3
400,000 - 499,999	16	13	23.1	159	116	37.1
500,000 - 599,999	5	6	-16.7	81	81	0.0
600,000 - 699,999	7	4	75.0	33	44	-25.0
700,000 - 799,999	5	3	66.7	35	24	45.8
800,000 - 899,999	3	1	200.0	13	13	0.0
900,000 - 999,999	0	0	0.0	2	3	-33.3
1,000,000 - 1,249,999	3	1	200.0	6	7	-14.3
1,250,000 - 1,499,999	0	0	0.0	5	7	-28.6
1,500,000 +	3	2	50.0	22	22	0.0
TOTALS	275	269	2.2	2436	2307	5.6

SALES TREND

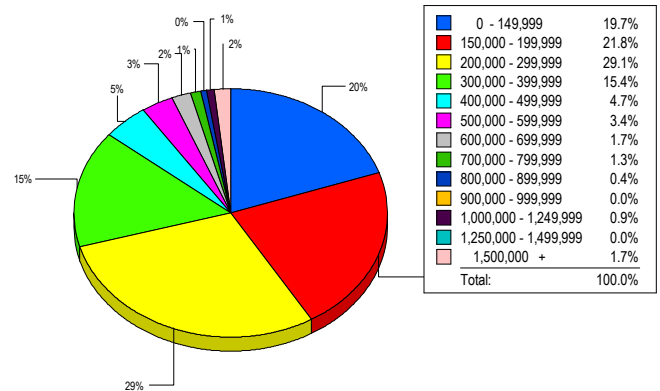
Contracts Ratified Per Month



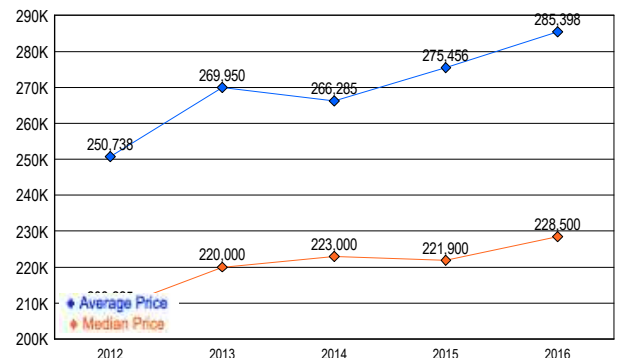
SETTLEMENTS

Price Range	New This Month			Year-To-Date		
	2016	2015	% Change	2016	2015	% Change
0 - 149,999	46	53	-13.2	490	483	1.4
150,000 - 199,999	51	53	-3.8	462	441	4.8
200,000 - 299,999	68	68	0.0	648	569	13.9
300,000 - 399,999	36	41	-12.2	381	337	13.1
400,000 - 499,999	11	10	10.0	145	113	28.3
500,000 - 599,999	8	4	100.0	73	79	-7.6
600,000 - 699,999	4	5	-20.0	30	44	-31.8
700,000 - 799,999	3	1	200.0	29	19	52.6
800,000 - 899,999	1	0	100.0	12	9	33.3
900,000 - 999,999	0	0	0.0	2	4	-50.0
1,000,000 - 1,249,999	2	1	100.0	8	9	-11.1
1,250,000 - 1,499,999	0	1	-100.0	6	4	50.0
1,500,000 +	4	1	300.0	26	21	23.8
TOTALS	234	238	-1.7	2312	2132	8.4

MARKET BY PRICE RANGE



AVERAGE & MEDIAN PRICE



DATA SOURCE: Metropolitan Regional Information Systems, Inc. (MRIS)

NOTES: Properties not listed through this Multiple Listing Service are not reflected. The term "sales" represents ratified purchase contracts. Current year information is preliminary and subject to revision. Current year-to-date contract information may not equal the sum of the monthly contract totals reported in