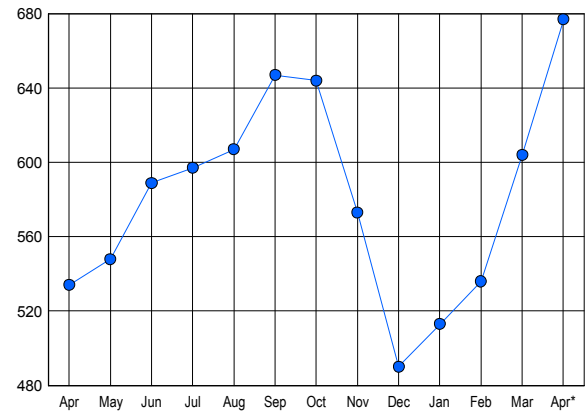


### LISTINGS

| Price Range           | New This Month |            |            | Total Actives |            |             |
|-----------------------|----------------|------------|------------|---------------|------------|-------------|
|                       | 2015           | 2014       | % Change   | 2015          | 2014       | % Change    |
| 0 - 149,999           | 73             | 67         | 9.0        | 120           | 83         | 44.6        |
| 150,000 - 199,999     | 64             | 57         | 12.3       | 120           | 94         | 27.7        |
| 200,000 - 299,999     | 133            | 95         | 40.0       | 203           | 153        | 32.7        |
| 300,000 - 399,999     | 67             | 80         | -16.3      | 129           | 113        | 14.2        |
| 400,000 - 499,999     | 27             | 32         | -15.6      | 43            | 46         | -6.5        |
| 500,000 - 599,999     | 21             | 14         | 50.0       | 26            | 22         | 18.2        |
| 600,000 - 699,999     | 1              | 4          | -75.0      | 5             | 7          | -28.6       |
| 700,000 - 799,999     | 6              | 6          | 0.0        | 9             | 6          | 50.0        |
| 800,000 - 899,999     | 4              | 1          | 300.0      | 1             | 2          | -50.0       |
| 900,000 - 999,999     | 0              | 1          | -100.0     | 3             | 1          | 200.0       |
| 1,000,000 - 1,249,999 | 1              | 4          | -75.0      | 2             | 3          | -33.3       |
| 1,250,000 - 1,499,999 | 0              | 1          | -100.0     | 4             | 1          | 300.0       |
| 1,500,000 +           | 2              | 1          | 100.0      | 12            | 3          | 300.0       |
| <b>TOTALS</b>         | <b>399</b>     | <b>363</b> | <b>9.9</b> | <b>677</b>    | <b>534</b> | <b>26.8</b> |

### INVENTORY TREND

Listings Active at End of Month

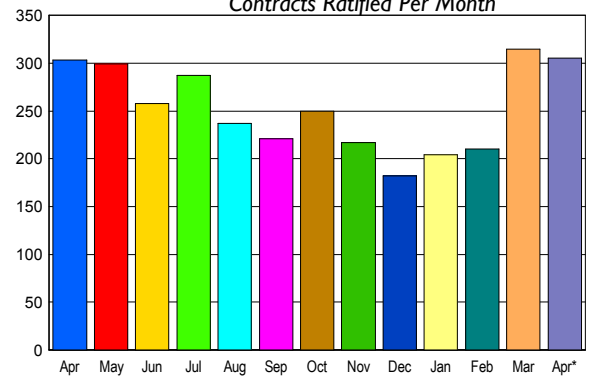


### CONTRACTS

| Price Range           | New This Month |            |            | Year-To-Date |            |            |
|-----------------------|----------------|------------|------------|--------------|------------|------------|
|                       | 2015           | 2014       | % Change   | 2015         | 2014       | % Change   |
| 0 - 149,999           | 59             | 85         | -30.6      | 211          | 257        | -17.9      |
| 150,000 - 199,999     | 62             | 53         | 17.0       | 203          | 188        | 8.0        |
| 200,000 - 299,999     | 102            | 73         | 39.7       | 282          | 242        | 16.5       |
| 300,000 - 399,999     | 45             | 51         | -11.8      | 142          | 142        | 0.0        |
| 400,000 - 499,999     | 14             | 24         | -41.7      | 52           | 58         | -10.3      |
| 500,000 - 599,999     | 11             | 9          | 22.2       | 36           | 30         | 20.0       |
| 600,000 - 699,999     | 3              | 2          | 50.0       | 20           | 15         | 33.3       |
| 700,000 - 799,999     | 3              | 4          | -25.0      | 9            | 14         | -35.7      |
| 800,000 - 899,999     | 5              | 0          | 500.0      | 7            | 2          | 250.0      |
| 900,000 - 999,999     | 0              | 1          | -100.0     | 2            | 3          | -33.3      |
| 1,000,000 - 1,249,999 | 0              | 0          | 0.0        | 1            | 1          | 0.0        |
| 1,250,000 - 1,499,999 | 0              | 1          | -100.0     | 3            | 3          | 0.0        |
| 1,500,000 +           | 1              | 0          | 100.0      | 6            | 5          | 20.0       |
| <b>TOTALS</b>         | <b>305</b>     | <b>303</b> | <b>0.7</b> | <b>974</b>   | <b>960</b> | <b>1.5</b> |

### SALES TREND

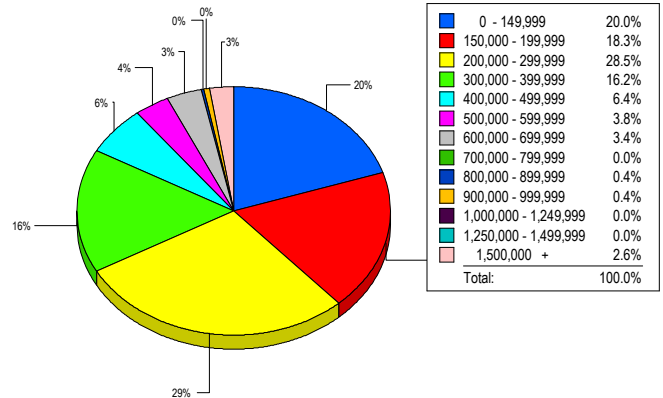
Contracts Ratified Per Month



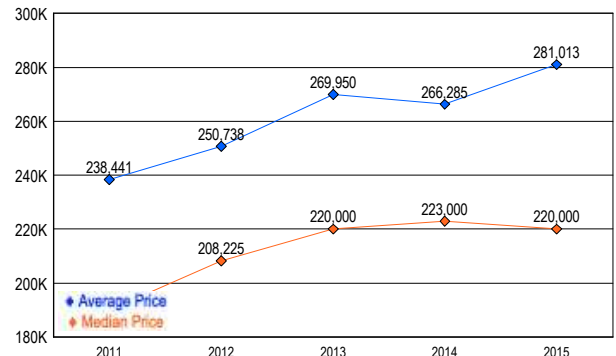
### SETTLEMENTS

| Price Range           | New This Month |            |            | Year-To-Date |            |            |
|-----------------------|----------------|------------|------------|--------------|------------|------------|
|                       | 2015           | 2014       | % Change   | 2015         | 2014       | % Change   |
| 0 - 149,999           | 47             | 42         | 11.9       | 189          | 181        | 4.4        |
| 150,000 - 199,999     | 43             | 36         | 19.4       | 156          | 130        | 20.0       |
| 200,000 - 299,999     | 67             | 69         | -2.9       | 185          | 210        | -11.9      |
| 300,000 - 399,999     | 38             | 32         | 18.8       | 121          | 100        | 21.0       |
| 400,000 - 499,999     | 15             | 22         | -31.8      | 55           | 46         | 19.6       |
| 500,000 - 599,999     | 9              | 6          | 50.0       | 31           | 23         | 34.8       |
| 600,000 - 699,999     | 8              | 6          | 33.3       | 17           | 14         | 21.4       |
| 700,000 - 799,999     | 0              | 4          | -100.0     | 4            | 13         | -69.2      |
| 800,000 - 899,999     | 1              | 1          | 0.0        | 1            | 4          | -75.0      |
| 900,000 - 999,999     | 1              | 0          | 100.0      | 1            | 1          | 0.0        |
| 1,000,000 - 1,249,999 | 0              | 1          | -100.0     | 2            | 2          | 0.0        |
| 1,250,000 - 1,499,999 | 0              | 2          | -100.0     | 0            | 2          | -100.0     |
| 1,500,000 +           | 6              | 2          | 200.0      | 9            | 7          | 28.6       |
| <b>TOTALS</b>         | <b>235</b>     | <b>223</b> | <b>5.4</b> | <b>771</b>   | <b>733</b> | <b>5.2</b> |

### MARKET BY PRICE RANGE



### AVERAGE & MEDIAN PRICE



DATA SOURCE: Metropolitan Regional Information Systems, Inc. (MRIS)

NOTES: Properties not listed through this Multiple Listing Service are not reflected. The term "sales" represents ratified purchase contracts. Current year information is preliminary and subject to revision. Current year-to-date contract information may not equal the sum of the monthly contract totals reported in