

# MONTGOMERY COUNTY

## Residential Market Report



# HOUSING REPORT

## CONDO & COOPS

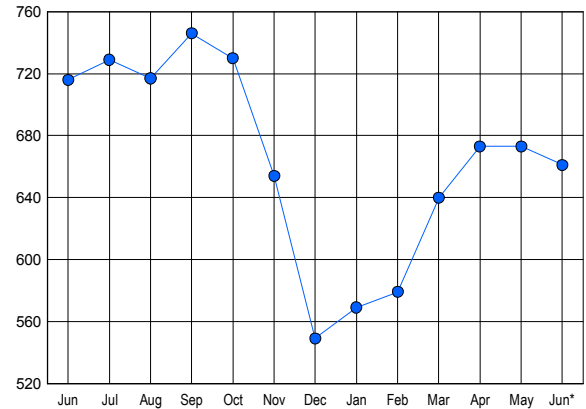
June 2016

### LISTINGS

Price Range	New This Month			Total Actives		
	2016	2015	% Change	2016	2015	% Change
0 - 149,999	61	70	-12.9	88	126	-30.2
150,000 - 199,999	72	63	14.3	120	143	-16.1
200,000 - 299,999	122	100	22.0	200	212	-5.7
300,000 - 399,999	69	66	4.5	111	127	-12.6
400,000 - 499,999	31	25	24.0	49	47	4.3
500,000 - 599,999	20	16	25.0	39	23	69.6
600,000 - 699,999	11	9	22.2	14	12	16.7
700,000 - 799,999	7	4	75.0	13	5	160.0
800,000 - 899,999	4	2	100.0	5	5	0.0
900,000 - 999,999	0	0	0.0	0	0	0.0
1,000,000 - 1,249,999	0	1	-100.0	4	2	100.0
1,250,000 - 1,499,999	1	0	100.0	5	1	400.0
1,500,000 +	11	4	175.0	13	13	0.0
<b>TOTALS</b>	<b>409</b>	<b>360</b>	<b>13.6</b>	<b>661</b>	<b>716</b>	<b>-7.7</b>

### INVENTORY TREND

Listings Active at End of Month

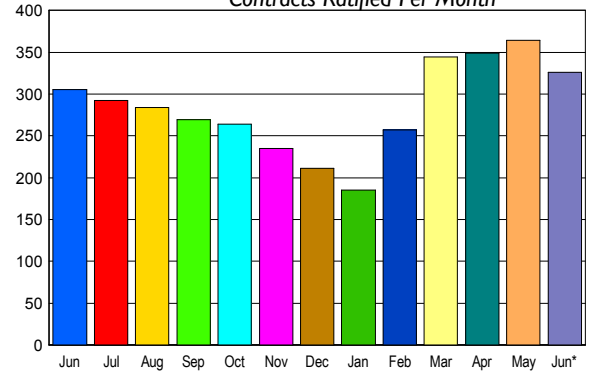


### CONTRACTS

Price Range	New This Month			Year-To-Date		
	2016	2015	% Change	2016	2015	% Change
0 - 149,999	53	76	-30.3	345	351	-1.7
150,000 - 199,999	72	59	22.0	336	302	11.3
200,000 - 299,999	99	83	19.3	490	451	8.6
300,000 - 399,999	57	54	5.6	272	236	15.3
400,000 - 499,999	21	12	75.0	111	72	54.2
500,000 - 599,999	10	13	-23.1	56	62	-9.7
600,000 - 699,999	3	5	-40.0	20	30	-33.3
700,000 - 799,999	5	1	400.0	26	18	44.4
800,000 - 899,999	1	1	0.0	9	11	-18.2
900,000 - 999,999	0	0	0.0	1	3	-66.7
1,000,000 - 1,249,999	0	1	-100.0	2	4	-50.0
1,250,000 - 1,499,999	0	0	0.0	4	4	0.0
1,500,000 +	5	0	500.0	15	9	66.7
<b>TOTALS</b>	<b>326</b>	<b>305</b>	<b>6.9</b>	<b>1687</b>	<b>1553</b>	<b>8.6</b>

### SALES TREND

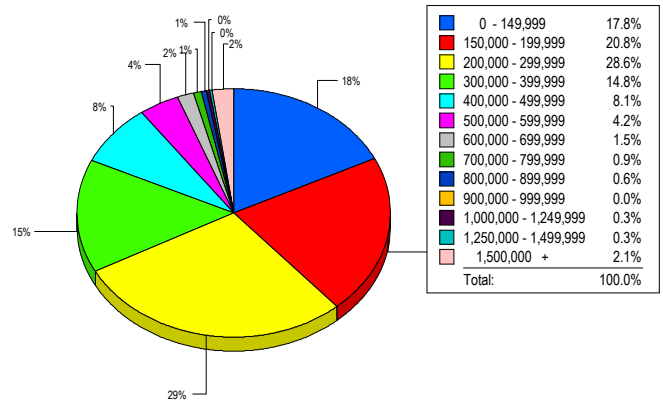
Contracts Ratified Per Month



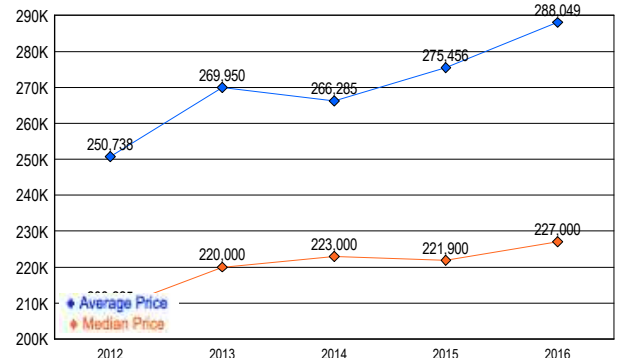
### SETTLEMENTS

Price Range	New This Month			Year-To-Date		
	2016	2015	% Change	2016	2015	% Change
0 - 149,999	59	63	-6.3	324	308	5.2
150,000 - 199,999	69	54	27.8	282	271	4.1
200,000 - 299,999	95	92	3.3	404	359	12.5
300,000 - 399,999	49	44	11.4	245	204	20.1
400,000 - 499,999	27	18	50.0	92	81	13.6
500,000 - 599,999	14	10	40.0	46	53	-13.2
600,000 - 699,999	5	9	-44.4	19	28	-32.1
700,000 - 799,999	3	5	-40.0	17	13	30.8
800,000 - 899,999	2	2	0.0	10	8	25.0
900,000 - 999,999	0	1	-100.0	1	4	-75.0
1,000,000 - 1,249,999	1	1	0.0	6	6	0.0
1,250,000 - 1,499,999	1	0	100.0	3	1	200.0
1,500,000 +	7	4	75.0	17	13	30.8
<b>TOTALS</b>	<b>332</b>	<b>303</b>	<b>9.6</b>	<b>1466</b>	<b>1349</b>	<b>8.7</b>

### MARKET BY PRICE RANGE



### AVERAGE & MEDIAN PRICE



DATA SOURCE: Metropolitan Regional Information Systems, Inc. (MRIS)

NOTES: Properties not listed through this Multiple Listing Service are not reflected. The term "sales" represents ratified purchase contracts. Current year information is preliminary and subject to revision. Current year-to-date contract information may not equal the sum of the monthly contract totals reported in