

# MONTGOMERY COUNTY

## Residential Market Report



# HOUSING REPORT

## CONDO & COOPS

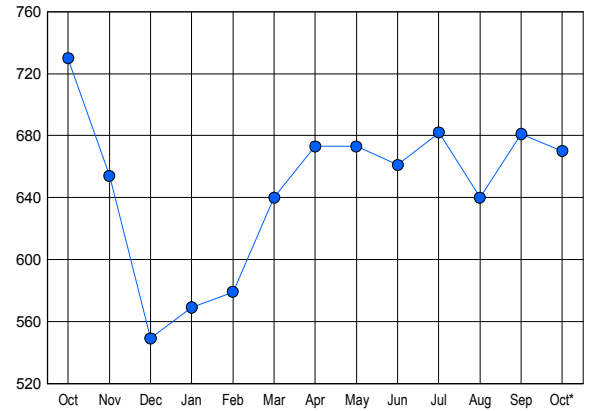
### October 2016

### LISTINGS

Price Range	New This Month			Total Actives		
	2016	2015	% Change	2016	2015	% Change
0 - 149,999	44	72	-38.9	77	129	-40.3
150,000 - 199,999	51	58	-12.1	113	131	-13.7
200,000 - 299,999	86	80	7.5	196	206	-4.9
300,000 - 399,999	53	74	-28.4	115	134	-14.2
400,000 - 499,999	22	25	-12.0	66	54	22.2
500,000 - 599,999	16	19	-15.8	40	28	42.9
600,000 - 699,999	7	7	0.0	15	10	50.0
700,000 - 799,999	4	9	-55.6	6	9	-33.3
800,000 - 899,999	1	4	-75.0	5	9	-44.4
900,000 - 999,999	0	0	0.0	2	2	0.0
1,000,000 - 1,249,999	2	0	200.0	8	0	0.0
1,250,000 - 1,499,999	2	1	100.0	5	3	66.7
1,500,000 +	5	4	25.0	22	15	46.7
<b>TOTALS</b>	<b>293</b>	<b>353</b>	<b>-17.0</b>	<b>670</b>	<b>730</b>	<b>-8.2</b>

### INVENTORY TREND

Listings Active at End of Month

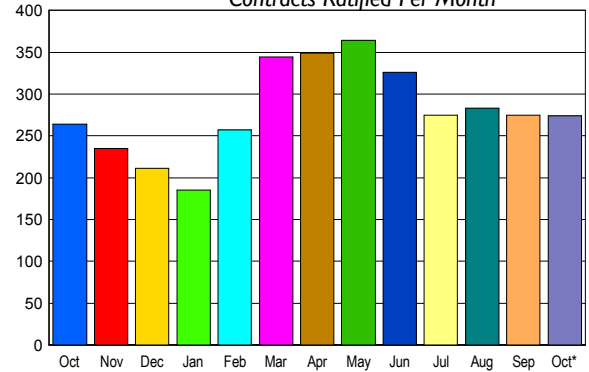


### CONTRACTS

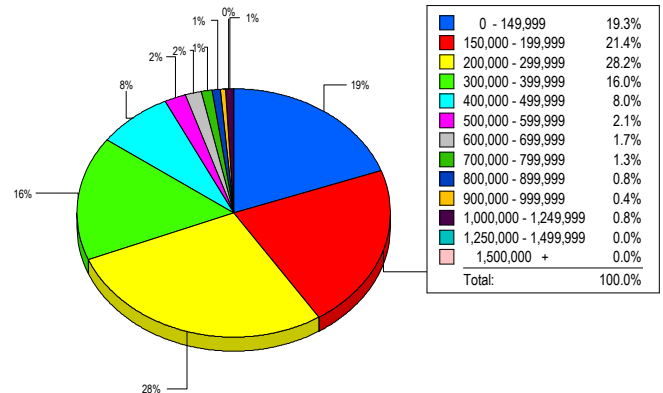
Price Range	New This Month			Year-To-Date		
	2016	2015	% Change	2016	2015	% Change
0 - 149,999	58	62	-6.5	539	574	-6.1
150,000 - 199,999	54	51	5.9	540	501	7.8
200,000 - 299,999	92	74	24.3	793	712	11.4
300,000 - 399,999	34	45	-24.4	424	406	4.4
400,000 - 499,999	15	11	36.4	173	126	37.3
500,000 - 599,999	9	10	-10.0	90	89	1.1
600,000 - 699,999	5	5	0.0	38	49	-22.4
700,000 - 799,999	3	3	0.0	38	27	40.7
800,000 - 899,999	1	2	-50.0	14	15	-6.7
900,000 - 999,999	0	0	0.0	2	3	-33.3
1,000,000 - 1,249,999	0	0	0.0	7	7	0.0
1,250,000 - 1,499,999	1	0	100.0	6	7	-14.3
1,500,000 +	2	1	100.0	24	22	9.1
<b>TOTALS</b>	<b>274</b>	<b>264</b>	<b>3.8</b>	<b>2688</b>	<b>2538</b>	<b>5.9</b>

### SALES TREND

Contracts Ratified Per Month



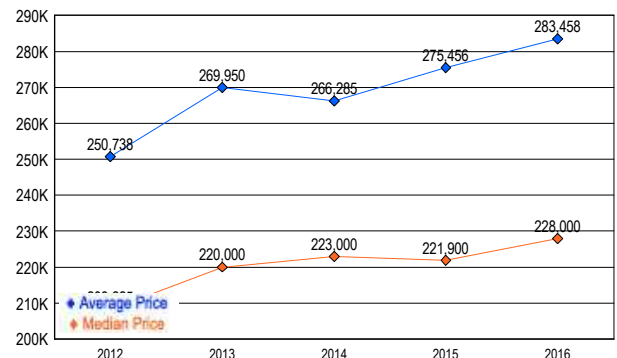
### MARKET BY PRICE RANGE



### SETTLEMENTS

Price Range	New This Month			Year-To-Date		
	2016	2015	% Change	2016	2015	% Change
0 - 149,999	46	70	-34.3	537	558	-3.8
150,000 - 199,999	51	46	10.9	519	488	6.4
200,000 - 299,999	67	52	28.8	716	621	15.3
300,000 - 399,999	38	45	-15.6	421	384	9.6
400,000 - 499,999	19	16	18.8	164	129	27.1
500,000 - 599,999	5	6	-16.7	78	85	-8.2
600,000 - 699,999	4	2	100.0	34	46	-26.1
700,000 - 799,999	3	3	0.0	32	22	45.5
800,000 - 899,999	2	0	200.0	14	9	55.6
900,000 - 999,999	1	0	100.0	3	4	-25.0
1,000,000 - 1,249,999	2	0	200.0	10	9	11.1
1,250,000 - 1,499,999	0	0	0.0	6	4	50.0
1,500,000 +	0	2	-100.0	26	23	13.0
<b>TOTALS</b>	<b>238</b>	<b>242</b>	<b>-1.7</b>	<b>2560</b>	<b>2382</b>	<b>7.5</b>

### AVERAGE & MEDIAN PRICE



DATA SOURCE: Metropolitan Regional Information Systems, Inc. (MRIS)

NOTES: Properties not listed through this Multiple Listing Service are not reflected. The term "sales" represents ratified purchase contracts. Current year information is preliminary and subject to revision. Current year-to-date contract information may not equal the sum of the monthly contract totals reported in