

# MONTGOMERY COUNTY

## Residential Market Report



# HOUSING REPORT

## CONDO & COOPS

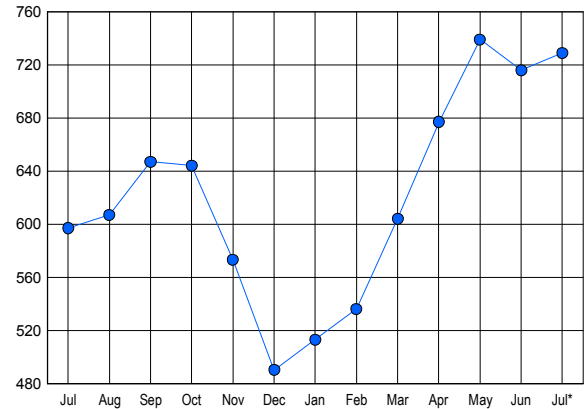
### July 2015

### LISTINGS

Price Range	New This Month			Total Actives		
	2015	2014	% Change	2015	2014	% Change
0 - 149,999	67	59	13.6	140	82	70.7
150,000 - 199,999	69	59	16.9	127	90	41.1
200,000 - 299,999	95	90	5.6	211	185	14.1
300,000 - 399,999	71	67	6.0	133	131	1.5
400,000 - 499,999	26	34	-23.5	58	56	3.6
500,000 - 599,999	9	10	-10.0	21	30	-30.0
600,000 - 699,999	4	8	-50.0	10	9	11.1
700,000 - 799,999	5	2	150.0	4	4	0.0
800,000 - 899,999	1	2	-50.0	6	1	500.0
900,000 - 999,999	0	1	-100.0	1	1	0.0
1,000,000 - 1,249,999	2	1	100.0	3	2	50.0
1,250,000 - 1,499,999	1	2	-50.0	2	5	-60.0
1,500,000 +	9	0	900.0	13	1	1200.0
<b>TOTALS</b>	<b>359</b>	<b>335</b>	<b>7.2</b>	<b>729</b>	<b>597</b>	<b>22.1</b>

### INVENTORY TREND

Listings Active at End of Month

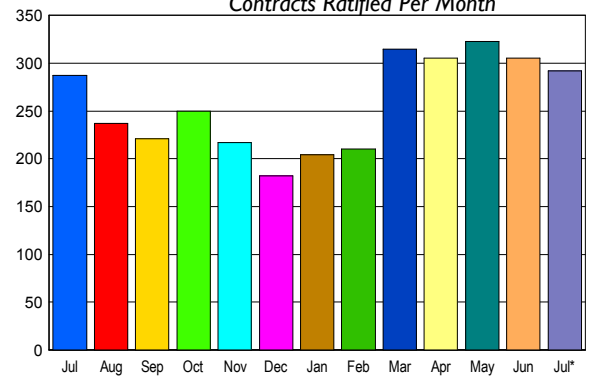


### CONTRACTS

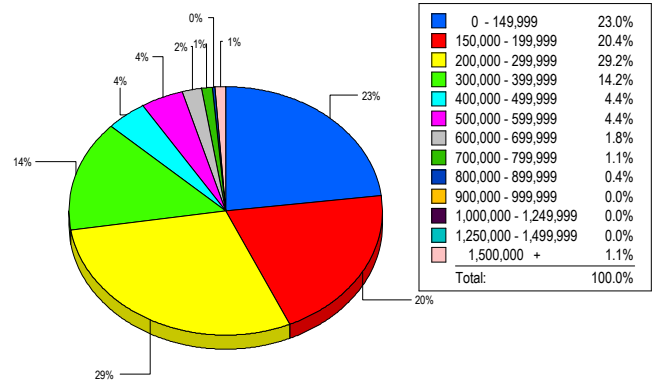
Price Range	New This Month			Year-To-Date		
	2015	2014	% Change	2015	2014	% Change
0 - 149,999	59	72	-18.1	400	420	-4.8
150,000 - 199,999	65	52	25.0	364	309	17.8
200,000 - 299,999	83	85	-2.4	524	453	15.7
300,000 - 399,999	49	47	4.3	280	274	2.2
400,000 - 499,999	14	17	-17.6	87	105	-17.1
500,000 - 599,999	5	6	-16.7	66	51	29.4
600,000 - 699,999	7	5	40.0	36	26	38.5
700,000 - 799,999	2	1	100.0	20	21	-4.8
800,000 - 899,999	0	0	0.0	11	2	450.0
900,000 - 999,999	0	0	0.0	3	6	-50.0
1,000,000 - 1,249,999	1	1	0.0	5	3	66.7
1,250,000 - 1,499,999	1	0	100.0	5	4	25.0
1,500,000 +	6	1	500.0	16	10	60.0
<b>TOTALS</b>	<b>292</b>	<b>287</b>	<b>1.7</b>	<b>1817</b>	<b>1684</b>	<b>7.9</b>

### SALES TREND

Contracts Ratified Per Month



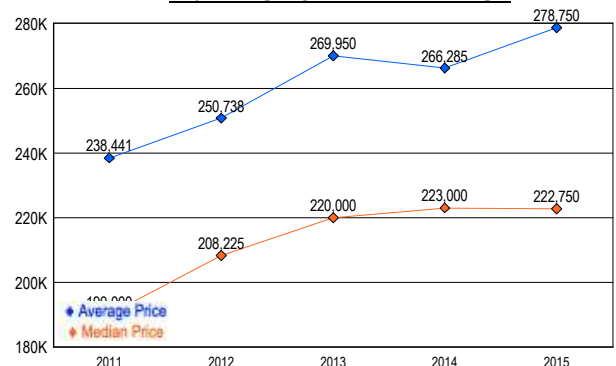
### MARKET BY PRICE RANGE



### SETTLEMENTS

Price Range	New This Month			Year-To-Date		
	2015	2014	% Change	2015	2014	% Change
0 - 149,999	63	53	18.9	377	360	4.7
150,000 - 199,999	56	38	47.4	329	266	23.7
200,000 - 299,999	80	57	40.4	440	423	4.0
300,000 - 399,999	39	41	-4.9	246	239	2.9
400,000 - 499,999	12	14	-14.3	93	93	0.0
500,000 - 599,999	12	7	71.4	66	48	37.5
600,000 - 699,999	5	1	400.0	33	18	83.3
700,000 - 799,999	3	1	200.0	16	23	-30.4
800,000 - 899,999	1	0	100.0	9	5	80.0
900,000 - 999,999	0	1	-100.0	4	3	33.3
1,000,000 - 1,249,999	0	2	-100.0	6	5	20.0
1,250,000 - 1,499,999	0	1	-100.0	1	3	-66.7
1,500,000 +	3	1	200.0	16	10	60.0
<b>TOTALS</b>	<b>274</b>	<b>217</b>	<b>26.3</b>	<b>1636</b>	<b>1496</b>	<b>9.4</b>

### AVERAGE & MEDIAN PRICE



DATA SOURCE: Metropolitan Regional Information Systems, Inc. (MRIS)

NOTES: Properties not listed through this Multiple Listing Service are not reflected. The term "sales" represents ratified purchase contracts. Current year information is preliminary and subject to revision. Current year-to-date contract information may not equal the sum of the monthly contract totals reported in