

# MONTGOMERY COUNTY

## Residential Market Report



# HOUSING REPORT

## CONDO & COOPS

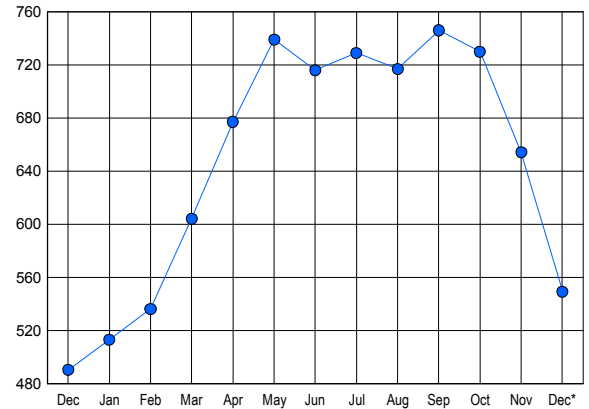
### December 2015

### LISTINGS

Price Range	New This Month			Total Actives		
	2015	2014	% Change	2015	2014	% Change
0 - 149,999	44	39	12.8	111	101	9.9
150,000 - 199,999	43	33	30.3	105	85	23.5
200,000 - 299,999	45	35	28.6	165	147	12.2
300,000 - 399,999	22	23	-4.3	83	86	-3.5
400,000 - 499,999	13	12	8.3	28	29	-3.4
500,000 - 599,999	9	4	125.0	22	14	57.1
600,000 - 699,999	3	4	-25.0	6	14	-57.1
700,000 - 799,999	2	1	100.0	7	5	40.0
800,000 - 899,999	1	0	100.0	7	0	0.0
900,000 - 999,999	0	0	0.0	0	0	0.0
1,000,000 - 1,249,999	2	1	100.0	1	1	0.0
1,250,000 - 1,499,999	0	0	0.0	3	2	50.0
1,500,000 +	10	3	233.3	11	6	83.3
<b>TOTALS</b>	<b>194</b>	<b>155</b>	<b>25.2</b>	<b>549</b>	<b>490</b>	<b>12.0</b>

### INVENTORY TREND

Listings Active at End of Month

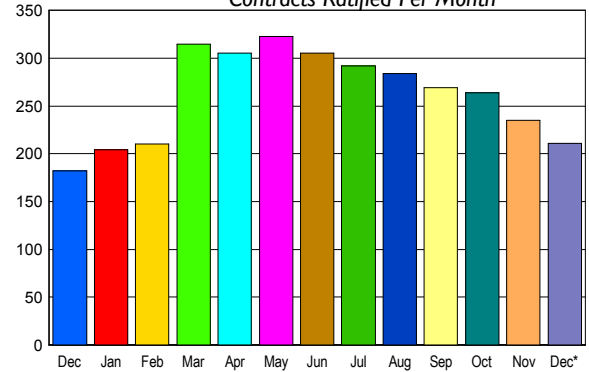


### CONTRACTS

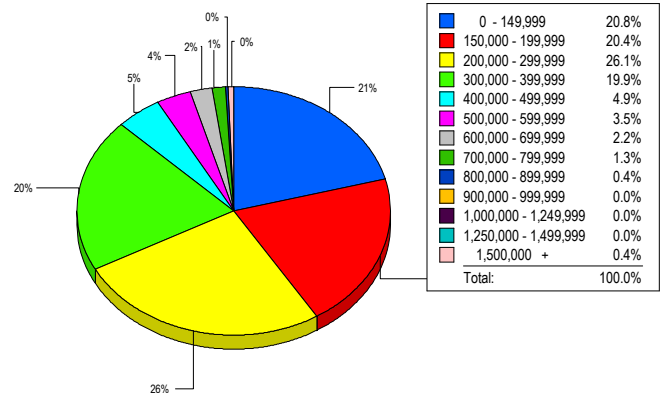
Price Range	New This Month			Year-To-Date		
	2015	2014	% Change	2015	2014	% Change
0 - 149,999	58	54	7.4	669	654	2.3
150,000 - 199,999	40	34	17.6	577	478	20.7
200,000 - 299,999	56	43	30.2	812	718	13.1
300,000 - 399,999	30	24	25.0	473	432	9.5
400,000 - 499,999	14	15	-6.7	152	175	-13.1
500,000 - 599,999	3	8	-62.5	99	81	22.2
600,000 - 699,999	2	1	100.0	54	48	12.5
700,000 - 799,999	1	0	100.0	31	26	19.2
800,000 - 899,999	0	0	0.0	15	3	400.0
900,000 - 999,999	1	0	100.0	4	10	-60.0
1,000,000 - 1,249,999	2	0	200.0	9	4	125.0
1,250,000 - 1,499,999	0	0	0.0	8	7	14.3
1,500,000 +	4	3	33.3	27	16	68.8
<b>TOTALS</b>	<b>211</b>	<b>182</b>	<b>15.9</b>	<b>2930</b>	<b>2652</b>	<b>10.5</b>

### SALES TREND

Contracts Ratified Per Month



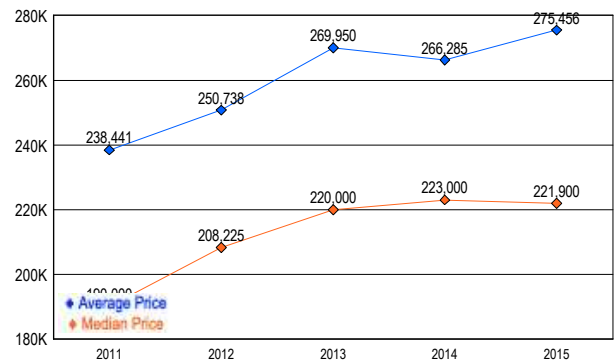
### MARKET BY PRICE RANGE



### SETTLEMENTS

Price Range	New This Month			Year-To-Date		
	2015	2014	% Change	2015	2014	% Change
0 - 149,999	47	60	-21.7	660	633	4.3
150,000 - 199,999	46	28	64.3	568	436	30.3
200,000 - 299,999	59	46	28.3	752	736	2.2
300,000 - 399,999	45	33	36.4	456	410	11.2
400,000 - 499,999	11	17	-35.3	148	159	-6.9
500,000 - 599,999	8	3	166.7	101	78	29.5
600,000 - 699,999	5	6	-16.7	57	45	26.7
700,000 - 799,999	3	3	0.0	27	31	-12.9
800,000 - 899,999	1	0	100.0	12	6	100.0
900,000 - 999,999	0	2	-100.0	4	6	-33.3
1,000,000 - 1,249,999	0	1	-100.0	9	8	12.5
1,250,000 - 1,499,999	0	0	0.0	4	6	-33.3
1,500,000 +	1	1	0.0	27	14	92.9
<b>TOTALS</b>	<b>226</b>	<b>200</b>	<b>13.0</b>	<b>2825</b>	<b>2568</b>	<b>10.0</b>

### AVERAGE & MEDIAN PRICE



DATA SOURCE: Metropolitan Regional Information Systems, Inc. (MRIS)

NOTES: Properties not listed through this Multiple Listing Service are not reflected. The term "sales" represents ratified purchase contracts. Current year information is preliminary and subject to revision. Current year-to-date contract information may not equal the sum of the monthly contract totals reported in