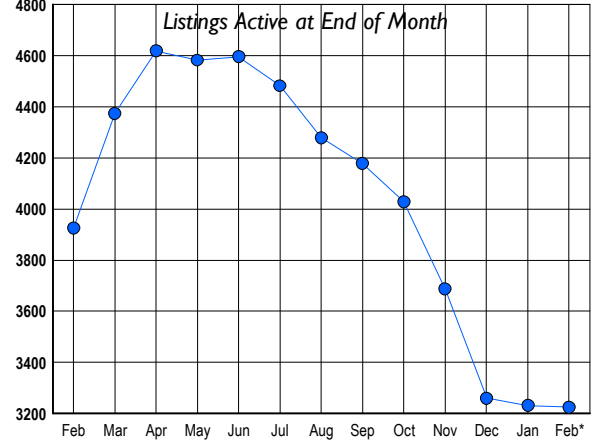




## LISTINGS

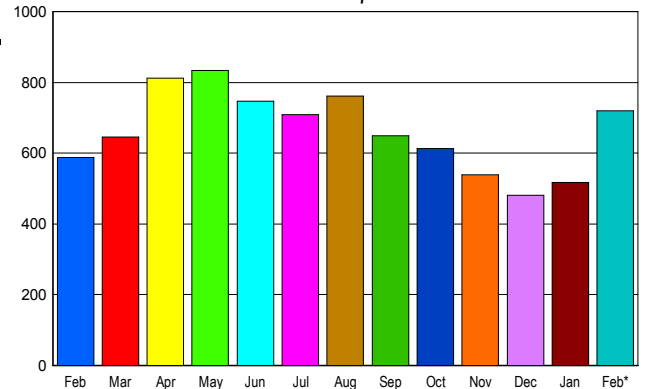
Prices Range	New This Month			Total Actives		
	2009	2008	% Change	2009	2008	% Change
0 - 149,999	19	0	1,900.0	62	6	933.3
150,000 - 199,999	83	23	260.9	237	40	492.5
200,000 - 299,999	199	173	15.0	634	503	26.0
300,000 - 399,999	216	317	-31.9	582	948	-38.6
400,000 - 499,999	130	253	-48.6	368	812	-54.7
500,000 - 599,999	113	145	-22.1	277	442	-37.3
600,000 - 699,999	72	94	-23.4	184	281	-34.5
700,000 - 799,999	46	80	-42.5	153	209	-26.8
800,000 - 899,999	36	48	-25.0	121	128	-5.5
900,000 - 999,999	25	37	-32.4	92	77	19.5
1,000,000 - 1,249,999	39	48	-18.8	113	117	-3.4
1,250,000 - 1,499,999	33	44	-25.0	117	118	-0.8
1,500,000 +	53	50	6.0	285	244	16.8
<b>TOTALS</b>	<b>1064</b>	<b>1312</b>	<b>-18.9</b>	<b>3225</b>	<b>3925</b>	<b>-17.8</b>

## INVENTORY TREND



## SALES TREND

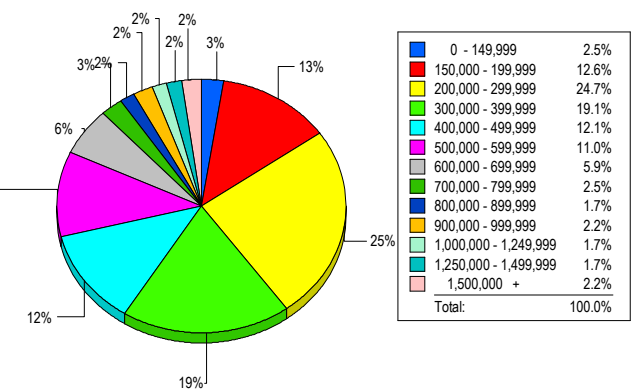
Contracts Ratified Per Month



## CONTRACTS

Price Range	New This Month			Year-To-Date		
	2009	2008	% Change	2009	2008	% Change
0 - 149,999	22	0	2,200.0	34	0	3,400.0
150,000 - 199,999	80	10	700.0	125	12	941.7
200,000 - 299,999	182	75	142.7	321	141	127.7
300,000 - 399,999	143	154	-7.1	241	272	-11.4
400,000 - 499,999	92	110	-16.4	156	200	-22.0
500,000 - 599,999	59	67	-11.9	110	123	-10.6
600,000 - 699,999	47	49	-4.1	75	85	-11.8
700,000 - 799,999	37	40	-7.5	54	68	-20.6
800,000 - 899,999	19	20	-5.0	30	41	-26.8
900,000 - 999,999	8	17	-52.9	17	24	-29.2
1,000,000 - 1,249,999	13	15	-13.3	21	31	-32.3
1,250,000 - 1,499,999	9	17	-47.1	18	31	-41.9
1,500,000 +	9	14	-35.7	15	36	-58.3
<b>TOTALS</b>	<b>720</b>	<b>588</b>	<b>22.4</b>	<b>1217</b>	<b>1064</b>	<b>14.4</b>

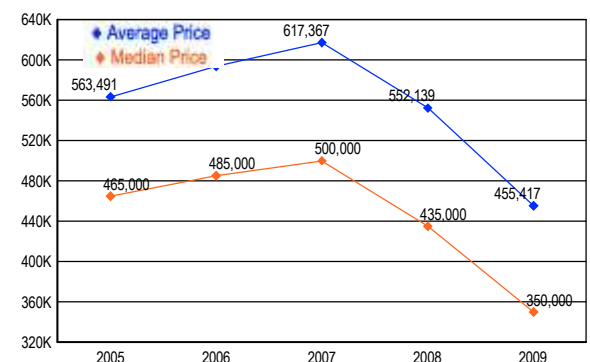
## MARKET BY PRICE RANGE



## SETTLEMENTS

Price Range	New This Month			Year-to-Date		
	2009	2008	% Change	2009	2008	% Change
0 - 149,999	9	0	900.0	13	0	1,300.0
150,000 - 199,999	45	3	1,400.0	70	8	775.0
200,000 - 299,999	88	46	91.3	174	87	100.0
300,000 - 399,999	68	102	-33.3	142	185	-23.2
400,000 - 499,999	43	66	-34.8	83	143	-42.0
500,000 - 599,999	39	34	14.7	68	78	-12.8
600,000 - 699,999	21	29	-27.6	36	63	-42.9
700,000 - 799,999	9	23	-60.9	19	34	-44.1
800,000 - 899,999	6	10	-40.0	13	24	-45.8
900,000 - 999,999	8	7	14.3	12	14	-14.3
1,000,000 - 1,249,999	6	12	-50.0	18	21	-14.3
1,250,000 - 1,499,999	6	20	-70.0	11	26	-57.7
1,500,000 +	8	21	-61.9	12	31	-61.3
<b>TOTALS</b>	<b>356</b>	<b>373</b>	<b>-4.6</b>	<b>671</b>	<b>714</b>	<b>-6.0</b>

## AVERAGE & MEDIAN PRICE



DATA SOURCE: Metropolitan Regional Information Systems, Inc. (MRIS)

NOTES: Properties not listed through this Multiple Listing Service are not reflected. The term "sales" represents ratified purchase contracts. Current year information is preliminary and subject to revision. Current year-to-date contract information may not equal the sum of the monthly contract totals reported in