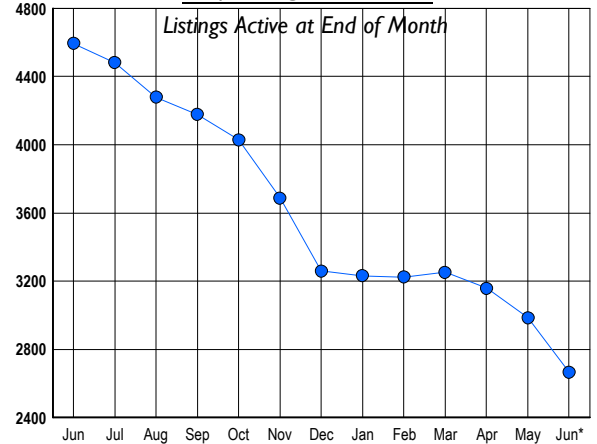




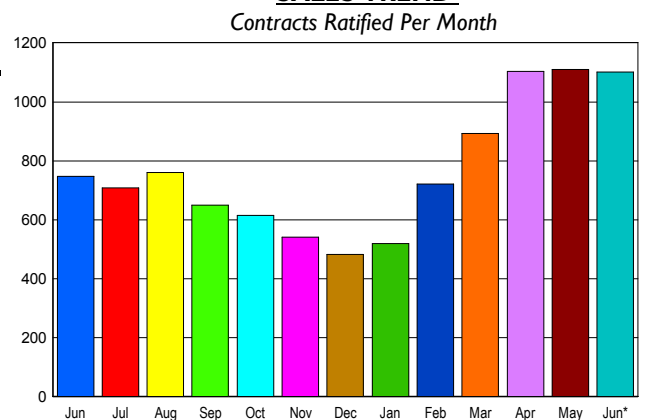
LISTINGS

Prices Range	New This Month			Total Actives		
	2009	2008	% Change	2009	2008	% Change
0 - 149,999	36	5	620.0	56	14	300.0
150,000 - 199,999	74	37	100.0	103	84	22.6
200,000 - 299,999	191	202	-5.4	386	754	-48.8
300,000 - 399,999	207	276	-25.0	407	1,060	-61.6
400,000 - 499,999	177	205	-13.7	353	779	-54.7
500,000 - 599,999	117	169	-30.8	251	507	-50.5
600,000 - 699,999	85	120	-29.2	183	334	-45.2
700,000 - 799,999	67	57	17.5	178	229	-22.3
800,000 - 899,999	41	38	7.9	126	158	-20.3
900,000 - 999,999	30	30	0.0	100	106	-5.7
1,000,000 - 1,249,999	25	44	-43.2	114	159	-28.3
1,250,000 - 1,499,999	36	37	-2.7	127	131	-3.1
1,500,000 +	36	67	-46.3	281	280	0.4
TOTALS	1122	1287	-12.8	2665	4595	-42.0

INVENTORY TREND



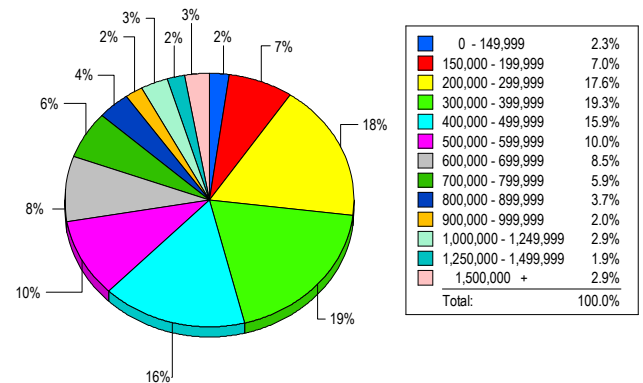
SALES TREND



CONTRACTS

Price Range	New This Month			Year-To-Date		
	2009	2008	% Change	2009	2008	% Change
0 - 149,999	51	5	920.0	171	9	1,800.0
150,000 - 199,999	98	17	476.5	457	74	517.6
200,000 - 299,999	230	125	84.0	1,099	511	115.1
300,000 - 399,999	227	172	32.0	978	892	9.6
400,000 - 499,999	144	114	26.3	657	660	-0.5
500,000 - 599,999	105	99	6.1	482	489	-1.4
600,000 - 699,999	88	66	33.3	361	342	5.6
700,000 - 799,999	42	37	13.5	240	253	-5.1
800,000 - 899,999	35	28	25.0	150	171	-12.3
900,000 - 999,999	20	15	33.3	94	102	-7.8
1,000,000 - 1,249,999	23	22	4.5	102	116	-12.1
1,250,000 - 1,499,999	17	23	-26.1	91	128	-28.9
1,500,000 +	21	25	-16.0	92	136	-32.4
TOTALS	1101	748	47.2	4974	3883	28.1

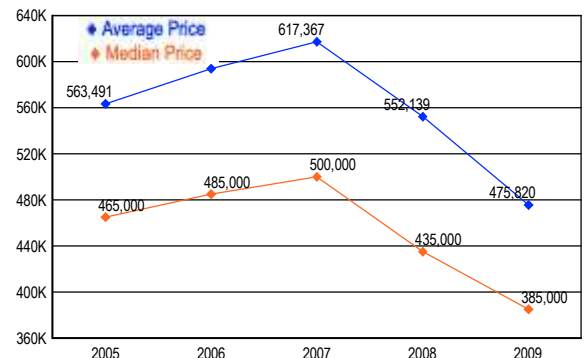
MARKET BY PRICE RANGE



SETTLEMENTS

Price Range	New This Month			Year-to-Date		
	2009	2008	% Change	2009	2008	% Change
0 - 149,999	20	0	2,000.0	81	3	2,600.0
150,000 - 199,999	60	9	566.7	293	42	597.6
200,000 - 299,999	151	69	118.8	741	354	109.3
300,000 - 399,999	166	147	12.9	716	739	-3.1
400,000 - 499,999	137	120	14.2	483	568	-15.0
500,000 - 599,999	86	94	-8.5	355	384	-7.6
600,000 - 699,999	73	71	2.8	255	304	-16.1
700,000 - 799,999	51	55	-7.3	176	193	-8.8
800,000 - 899,999	32	29	10.3	113	134	-15.7
900,000 - 999,999	17	19	-10.5	57	80	-28.8
1,000,000 - 1,249,999	25	35	-28.6	98	113	-13.3
1,250,000 - 1,499,999	16	22	-27.3	48	88	-45.5
1,500,000 +	25	26	-3.8	63	111	-43.2
TOTALS	859	696	23.4	3479	3113	11.8

AVERAGE & MEDIAN PRICE



DATA SOURCE: Metropolitan Regional Information Systems, Inc. (MRIS)

NOTES: Properties not listed through this Multiple Listing Service are not reflected. The term "sales" represents ratified purchase contracts. Current year information is preliminary and subject to revision. Current year-to-date contract information may not equal the sum of the monthly contract totals reported in