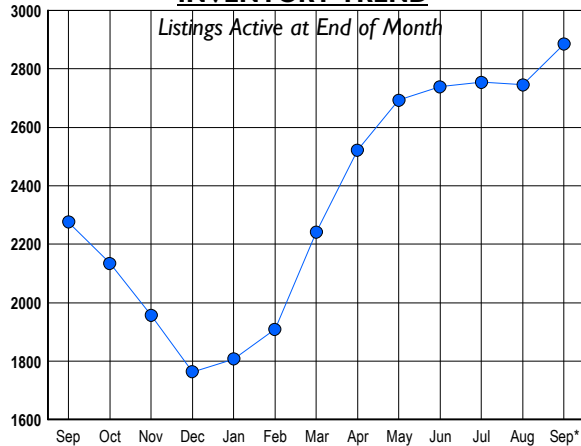




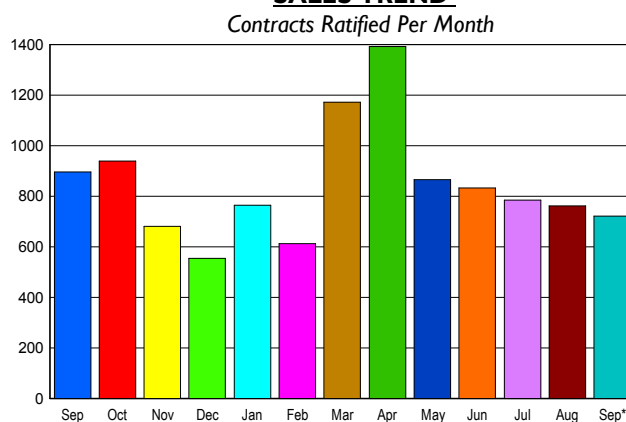
## LISTINGS

Prices Range	New This Month			Total Actives		
	2010	2009	% Change	2010	2009	% Change
0 - 149,999	32	30	6.7	67	36	86.1
150,000 - 199,999	77	80	-3.8	129	88	46.6
200,000 - 299,999	191	201	-5.0	495	281	76.2
300,000 - 399,999	203	230	-11.7	530	392	35.2
400,000 - 499,999	153	150	2.0	367	331	10.9
500,000 - 599,999	134	96	39.6	306	218	40.4
600,000 - 699,999	78	89	-12.4	233	179	30.2
700,000 - 799,999	75	68	10.3	139	140	-0.7
800,000 - 899,999	56	33	69.7	118	94	25.5
900,000 - 999,999	26	25	4.0	71	78	-9.0
1,000,000 - 1,249,999	41	32	28.1	94	94	0.0
1,250,000 - 1,499,999	31	18	72.2	100	96	4.2
1,500,000 +	63	66	-4.5	236	249	-5.2
<b>TOTALS</b>	<b>1160</b>	<b>1118</b>	<b>3.8</b>	<b>2885</b>	<b>2276</b>	<b>26.8</b>

## INVENTORY TREND



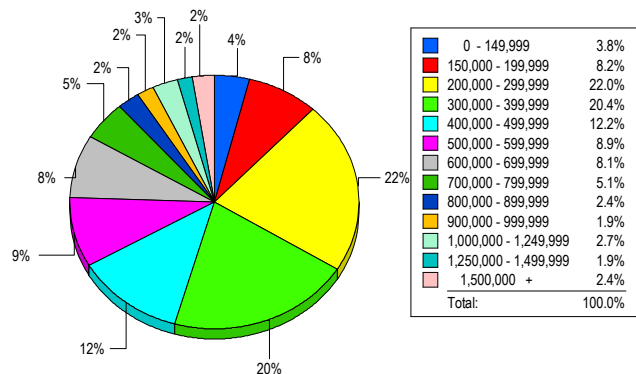
## SALES TREND



## CONTRACTS

Price Range	New This Month			Year-To-Date		
	2010	2009	% Change	2010	2009	% Change
0 - 149,999	33	42	-21.4	266	269	-1.1
150,000 - 199,999	74	90	-17.8	534	656	-18.6
200,000 - 299,999	170	216	-21.3	1,406	1,633	-13.9
300,000 - 399,999	116	191	-39.3	1,284	1,445	-11.1
400,000 - 499,999	82	105	-21.9	908	955	-4.9
500,000 - 599,999	75	82	-8.5	649	697	-6.9
600,000 - 699,999	43	50	-14.0	568	514	10.5
700,000 - 799,999	37	41	-9.8	361	370	-2.4
800,000 - 899,999	26	24	8.3	261	220	18.6
900,000 - 999,999	11	14	-21.4	152	144	5.6
1,000,000 - 1,249,999	21	15	40.0	186	153	21.6
1,250,000 - 1,499,999	16	12	33.3	148	137	8.0
1,500,000 +	18	14	28.6	152	149	2.0
<b>TOTALS</b>	<b>722</b>	<b>896</b>	<b>-19.4</b>	<b>6875</b>	<b>7342</b>	<b>-6.4</b>

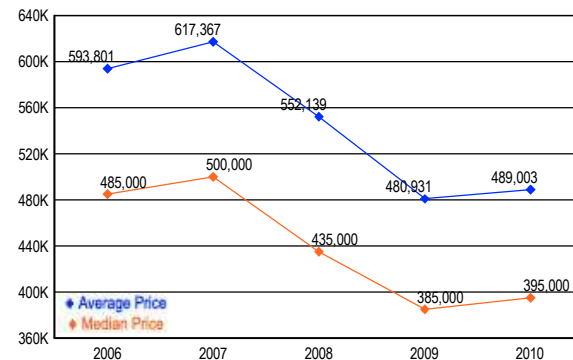
## MARKET BY PRICE RANGE



## SETTLEMENTS

Price Range	New This Month			Year-to-Date		
	2010	2009	% Change	2010	2009	% Change
0 - 149,999	22	21	4.8	221	160	38.1
150,000 - 199,999	48	46	4.3	449	473	-5.1
200,000 - 299,999	128	146	-12.3	1,296	1,253	3.4
300,000 - 399,999	119	140	-15.0	1,231	1,227	0.3
400,000 - 499,999	71	82	-13.4	843	826	2.1
500,000 - 599,999	52	62	-16.1	601	621	-3.2
600,000 - 699,999	47	37	27.0	525	457	14.9
700,000 - 799,999	30	24	25.0	359	292	22.9
800,000 - 899,999	14	26	-46.2	228	213	7.0
900,000 - 999,999	11	11	0.0	143	110	30.0
1,000,000 - 1,249,999	16	15	6.7	195	163	19.6
1,250,000 - 1,499,999	11	11	0.0	115	90	27.8
1,500,000 +	14	14	0.0	115	119	-3.4
<b>TOTALS</b>	<b>583</b>	<b>635</b>	<b>-8.2</b>	<b>6321</b>	<b>6004</b>	<b>5.3</b>

## AVERAGE & MEDIAN PRICE



DATA SOURCE: Metropolitan Regional Information Systems, Inc. (MRIS)

NOTES: Properties not listed through this Multiple Listing Service are not reflected. The term "sales" represents ratified purchase contracts. Current year information is preliminary and subject to revision. Current year-to-date contract information may not equal the sum of the monthly contract totals reported in