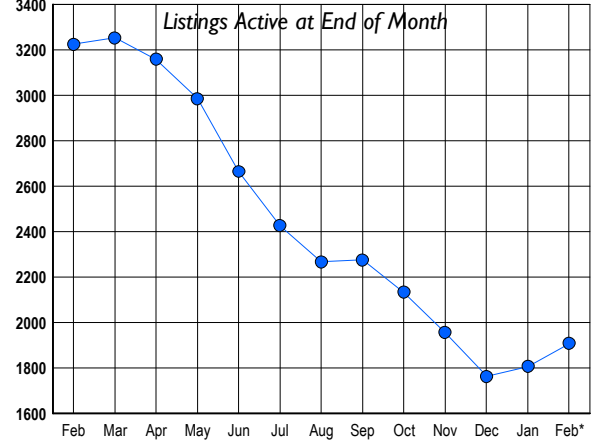




## LISTINGS

Prices Range	New This Month			Total Actives		
	2010	2009	% Change	2010	2009	% Change
0 - 149,999	24	19	26.3	31	62	-50.0
150,000 - 199,999	56	83	-32.5	97	237	-59.1
200,000 - 299,999	142	199	-28.6	282	634	-55.5
300,000 - 399,999	169	216	-21.8	378	582	-35.1
400,000 - 499,999	99	130	-23.8	259	368	-29.6
500,000 - 599,999	66	113	-41.6	165	277	-40.4
600,000 - 699,999	53	72	-26.4	151	184	-17.9
700,000 - 799,999	35	46	-23.9	95	153	-37.9
800,000 - 899,999	23	36	-36.1	82	121	-32.2
900,000 - 999,999	14	25	-44.0	45	92	-51.1
1,000,000 - 1,249,999	11	39	-71.8	64	113	-43.4
1,250,000 - 1,499,999	19	33	-42.4	74	117	-36.8
1,500,000 +	23	53	-56.6	186	285	-34.7
<b>TOTALS</b>	<b>734</b>	<b>1064</b>	<b>-31.0</b>	<b>1909</b>	<b>3225</b>	<b>-40.8</b>

## INVENTORY TREND

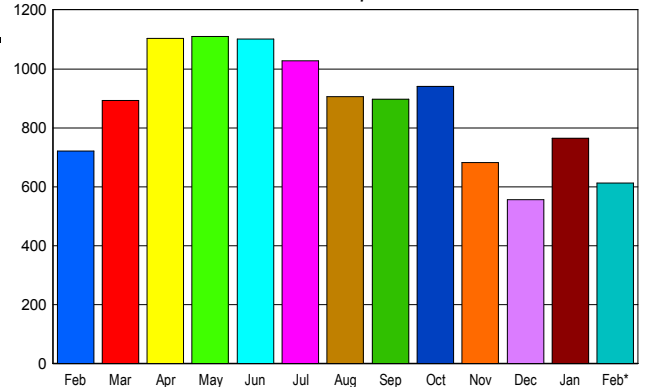


## CONTRACTS

Price Range	New This Month			Year-To-Date		
	2010	2009	% Change	2010	2009	% Change
0 - 149,999	26	22	18.2	73	34	114.7
150,000 - 199,999	56	80	-30.0	142	125	13.6
200,000 - 299,999	146	182	-19.8	317	321	-1.2
300,000 - 399,999	137	143	-4.2	278	241	15.4
400,000 - 499,999	78	92	-15.2	159	156	1.9
500,000 - 599,999	42	59	-28.8	93	110	-15.5
600,000 - 699,999	46	47	-2.1	89	75	18.7
700,000 - 799,999	26	37	-29.7	54	54	0.0
800,000 - 899,999	17	19	-10.5	34	30	13.3
900,000 - 999,999	10	8	25.0	21	17	23.5
1,000,000 - 1,249,999	6	13	-53.8	19	21	-9.5
1,250,000 - 1,499,999	11	9	22.2	25	18	38.9
1,500,000 +	12	9	33.3	22	15	46.7
<b>TOTALS</b>	<b>613</b>	<b>720</b>	<b>-14.9</b>	<b>1326</b>	<b>1217</b>	<b>9.0</b>

## SALES TREND

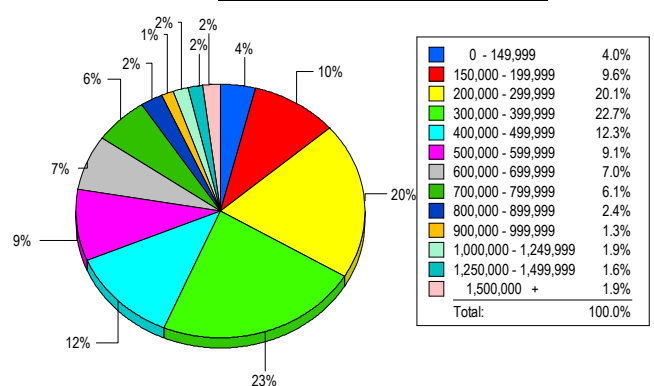
Contracts Ratified Per Month



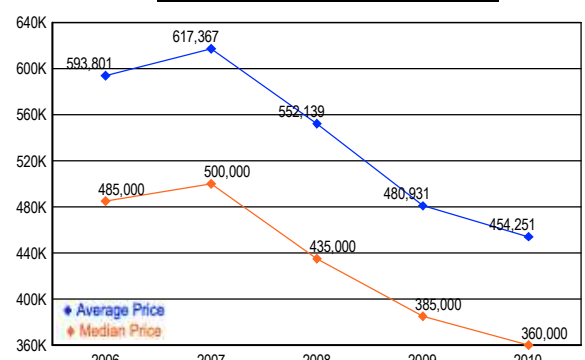
## SETTLEMENTS

Price Range	New This Month			Year-to-Date		
	2010	2009	% Change	2010	2009	% Change
0 - 149,999	15	9	66.7	43	13	230.8
150,000 - 199,999	36	45	-20.0	82	70	17.1
200,000 - 299,999	75	88	-14.8	180	174	3.4
300,000 - 399,999	85	68	25.0	181	142	27.5
400,000 - 499,999	46	43	7.0	99	83	19.3
500,000 - 599,999	34	39	-12.8	69	68	1.5
600,000 - 699,999	26	21	23.8	57	36	58.3
700,000 - 799,999	23	9	155.6	48	19	152.6
800,000 - 899,999	9	6	50.0	20	13	53.8
900,000 - 999,999	5	8	-37.5	14	12	16.7
1,000,000 - 1,249,999	7	6	16.7	22	18	22.2
1,250,000 - 1,499,999	6	6	0.0	12	11	9.1
1,500,000 +	7	8	-12.5	15	12	25.0
<b>TOTALS</b>	<b>374</b>	<b>356</b>	<b>5.1</b>	<b>842</b>	<b>671</b>	<b>25.5</b>

## MARKET BY PRICE RANGE



## AVERAGE & MEDIAN PRICE



DATA SOURCE: Metropolitan Regional Information Systems, Inc. (MRIS)

NOTES: Properties not listed through this Multiple Listing Service are not reflected. The term "sales" represents ratified purchase contracts. Current year information is preliminary and subject to revision. Current year-to-date contract information may not equal the sum of the monthly contract totals reported in