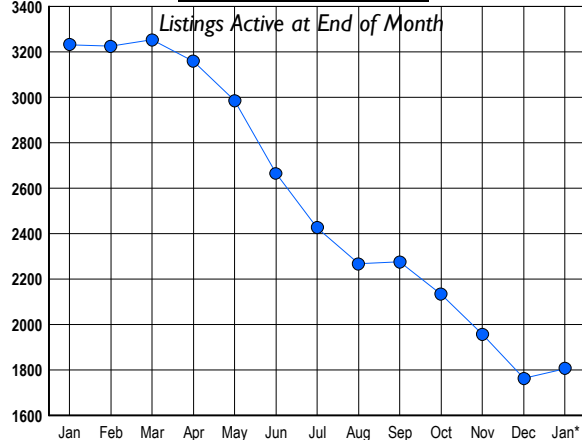


LISTINGS

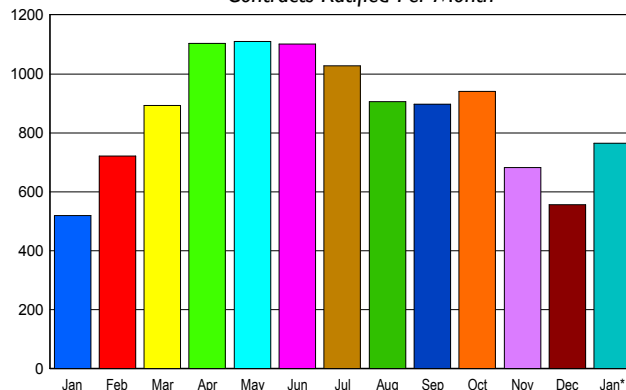
Prices Range	New This Month			Total Actives		
	2010	2009	% Change	2010	2009	% Change
0 - 149,999	32	18	77.8	37	55	-32.7
150,000 - 199,999	63	64	-1.6	84	231	-63.6
200,000 - 299,999	157	167	-6.0	269	655	-58.9
300,000 - 399,999	205	145	41.4	379	588	-35.5
400,000 - 499,999	125	108	15.7	234	381	-38.6
500,000 - 599,999	62	77	-19.5	148	275	-46.2
600,000 - 699,999	89	53	67.9	140	177	-20.9
700,000 - 799,999	47	44	6.8	89	167	-46.7
800,000 - 899,999	34	35	-2.9	81	127	-36.2
900,000 - 999,999	18	22	-18.2	35	77	-54.5
1,000,000 - 1,249,999	19	29	-34.5	56	111	-49.5
1,250,000 - 1,499,999	23	31	-25.8	73	107	-31.8
1,500,000 +	48	44	9.1	182	281	-35.2
TOTALS	922	837	10.2	1807	3232	-44.1

INVENTORY TREND



SALES TREND

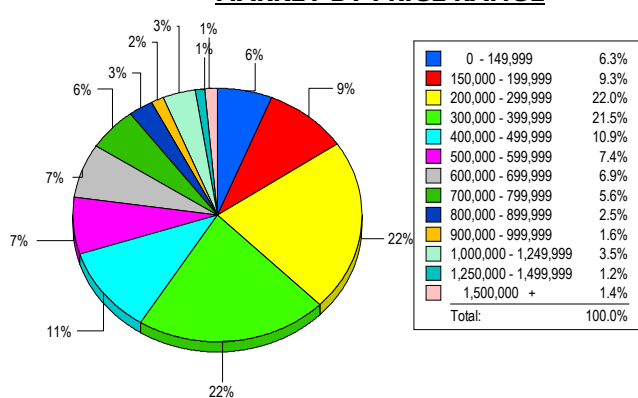
Contracts Ratified Per Month



CONTRACTS

Price Range	New This Month			Year-To-Date		
	2010	2009	% Change	2010	2009	% Change
0 - 149,999	53	12	341.7	53	12	341.7
150,000 - 199,999	94	50	88.0	94	50	88.0
200,000 - 299,999	193	149	29.5	193	149	29.5
300,000 - 399,999	147	101	45.5	147	101	45.5
400,000 - 499,999	85	66	28.8	85	66	28.8
500,000 - 599,999	51	54	-5.6	51	54	-5.6
600,000 - 699,999	44	29	51.7	44	29	51.7
700,000 - 799,999	30	18	66.7	30	18	66.7
800,000 - 899,999	16	11	45.5	16	11	45.5
900,000 - 999,999	10	9	11.1	10	9	11.1
1,000,000 - 1,249,999	14	7	100.0	14	7	100.0
1,250,000 - 1,499,999	16	7	128.6	16	7	128.6
1,500,000 +	11	5	120.0	11	5	120.0
TOTALS	764	518	47.5	764	518	47.5

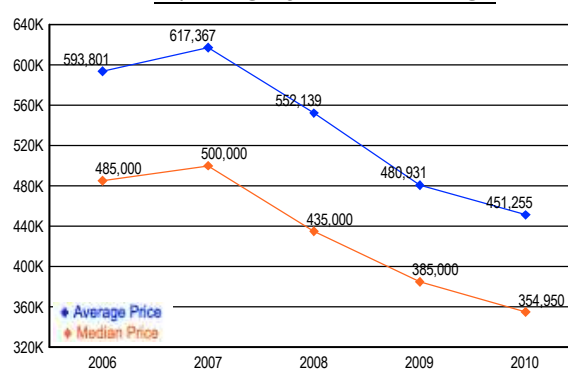
MARKET BY PRICE RANGE



SETTLEMENTS

Price Range	New This Month			Year-to-Date		
	2010	2009	% Change	2010	2009	% Change
0 - 149,999	27	4	575.0	27	4	575.0
150,000 - 199,999	40	21	90.5	40	21	90.5
200,000 - 299,999	95	75	26.7	95	75	26.7
300,000 - 399,999	93	67	38.8	93	67	38.8
400,000 - 499,999	47	38	23.7	47	38	23.7
500,000 - 599,999	32	27	18.5	32	27	18.5
600,000 - 699,999	30	15	100.0	30	15	100.0
700,000 - 799,999	24	9	166.7	24	9	166.7
800,000 - 899,999	11	7	57.1	11	7	57.1
900,000 - 999,999	7	4	75.0	7	4	75.0
1,000,000 - 1,249,999	15	11	36.4	15	11	36.4
1,250,000 - 1,499,999	5	5	0.0	5	5	0.0
1,500,000 +	6	4	50.0	6	4	50.0
TOTALS	432	287	50.5	432	287	50.5

AVERAGE & MEDIAN PRICE



DATA SOURCE: Metropolitan Regional Information Systems, Inc. (MRIS)

NOTES: Properties not listed through this Multiple Listing Service are not reflected. The term "sales" represents ratified purchase contracts. Current year information is preliminary and subject to revision. Current year-to-date contract information may not equal the sum of the monthly contract totals reported in