



## LISTINGS

Prices Range	New This Month			Total Actives		
	2008	2007	% Change	2008	2007	% Change
0 - 149,999	2	2	0.0	28	6	366.7
150,000 - 199,999	40	5	700.0	189	15	1,160.0
200,000 - 299,999	160	93	72.0	743	384	93.5
300,000 - 399,999	153	238	-35.7	758	977	-22.4
400,000 - 499,999	86	170	-49.4	489	886	-44.8
500,000 - 599,999	63	105	-40.0	348	483	-28.0
600,000 - 699,999	41	71	-42.3	221	348	-36.5
700,000 - 799,999	27	54	-50.0	174	217	-19.8
800,000 - 899,999	33	37	-10.8	135	147	-8.2
900,000 - 999,999	18	19	-5.3	95	79	20.3
1,000,000 - 1,249,999	17	16	6.3	120	104	15.4
1,250,000 - 1,499,999	14	24	-41.7	100	108	-7.4
1,500,000 +	44	40	10.0	287	239	20.1
<b>TOTALS</b>	<b>698</b>	<b>874</b>	<b>-20.1</b>	<b>3687</b>	<b>3993</b>	<b>-7.7</b>

## CONTRACTS

Price Range	New This Month			Year-To-Date		
	2008	2007	% Change	2008	2007	% Change
0 - 149,999	7	1	600.0	36	4	800.0
150,000 - 199,999	46	2	2,200.0	220	12	1,733.3
200,000 - 299,999	144	58	148.3	1,147	435	163.7
300,000 - 399,999	136	131	3.8	1,555	1,620	-4.0
400,000 - 499,999	63	111	-43.2	1,065	1,613	-34.0
500,000 - 599,999	50	53	-5.7	779	1,064	-26.8
600,000 - 699,999	24	44	-45.5	543	793	-31.5
700,000 - 799,999	27	22	22.7	392	532	-26.3
800,000 - 899,999	12	18	-33.3	256	343	-25.4
900,000 - 999,999	9	16	-43.8	158	216	-26.9
1,000,000 - 1,249,999	11	10	10.0	193	238	-18.9
1,250,000 - 1,499,999	6	16	-62.5	189	238	-20.6
1,500,000 +	5	14	-64.3	208	278	-25.2
<b>TOTALS</b>	<b>540</b>	<b>496</b>	<b>8.9</b>	<b>6741</b>	<b>7386</b>	<b>-8.7</b>

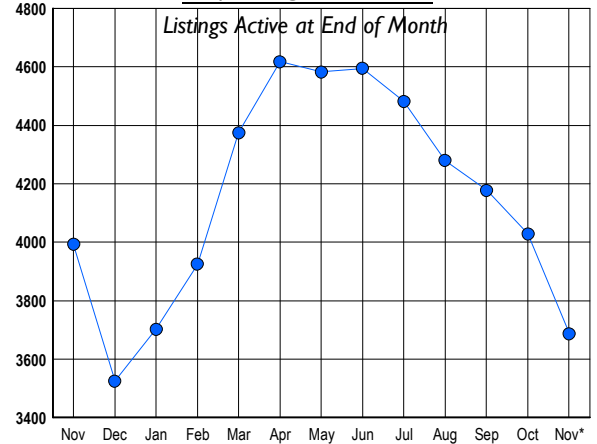
## SETTLEMENTS

Price Range	New This Month			Year-to-Date		
	2008	2007	% Change	2008	2007	% Change
0 - 149,999	5	0	500.0	23	2	1,050.0
150,000 - 199,999	29	1	2,800.0	152	12	1,166.7
200,000 - 299,999	96	38	152.6	946	391	141.9
300,000 - 399,999	105	110	-4.5	1,462	1,604	-8.9
400,000 - 499,999	50	104	-51.9	1,031	1,621	-36.4
500,000 - 599,999	35	52	-32.7	713	1,091	-34.6
600,000 - 699,999	27	31	-12.9	544	786	-30.8
700,000 - 799,999	15	25	-40.0	354	524	-32.4
800,000 - 899,999	13	16	-18.8	247	341	-27.6
900,000 - 999,999	7	17	-58.8	154	231	-33.3
1,000,000 - 1,249,999	11	13	-15.4	216	278	-22.3
1,250,000 - 1,499,999	8	11	-27.3	164	194	-15.5
1,500,000 +	9	16	-43.8	202	283	-28.6
<b>TOTALS</b>	<b>410</b>	<b>434</b>	<b>-5.5</b>	<b>6208</b>	<b>7358</b>	<b>-15.6</b>

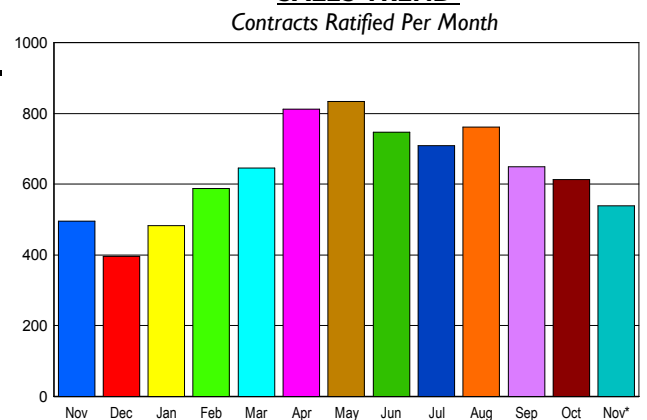
DATA SOURCE: Metropolitan Regional Information Systems, Inc. (MRIS)

NOTES: Properties not listed through this Multiple Listing Service are not reflected. The term "sales" represents ratified purchase contracts. Current year information is preliminary and subject to revision. Current year-to-date contract information may not equal the sum of the monthly contract totals reported in

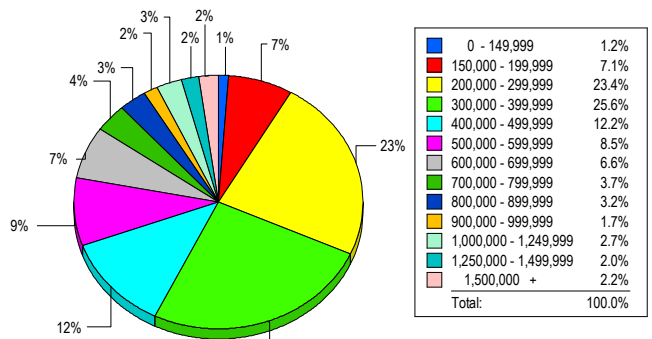
## INVENTORY TREND



## SALES TREND



## MARKET BY PRICE RANGE



## AVERAGE & MEDIAN PRICE

