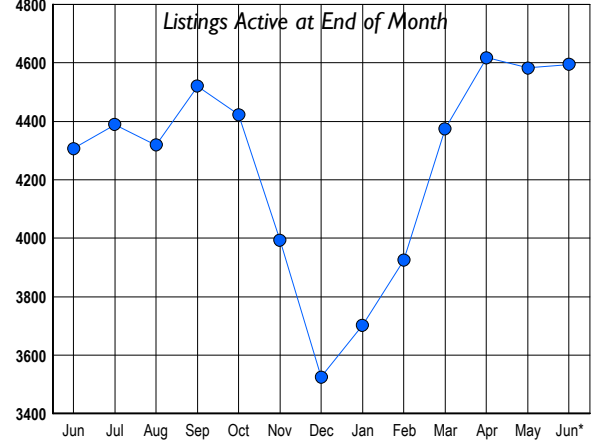




## LISTINGS

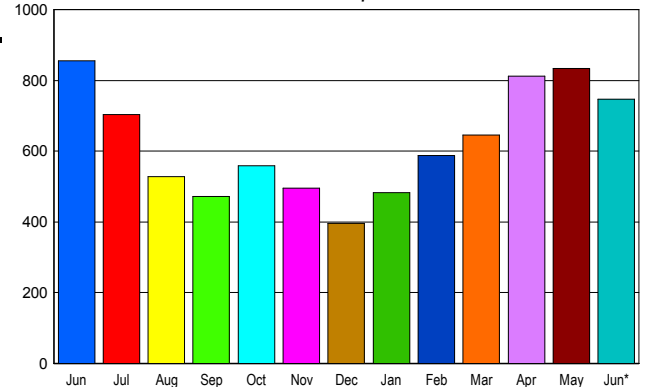
Prices Range	New This Month			Total Actives		
	2008	2007	% Change	2008	2007	% Change
0 - 149,999	5	0	500.0	14	5	180.0
150,000 - 199,999	37	0	3,700.0	84	3	2,700.0
200,000 - 299,999	202	87	132.2	754	214	252.3
300,000 - 399,999	276	344	-19.8	1,060	852	24.4
400,000 - 499,999	205	383	-46.5	779	1,082	-28.0
500,000 - 599,999	169	282	-40.1	507	679	-25.3
600,000 - 699,999	120	168	-28.6	334	383	-12.8
700,000 - 799,999	57	115	-50.4	229	252	-9.1
800,000 - 899,999	38	64	-40.6	158	172	-8.1
900,000 - 999,999	30	43	-30.2	106	103	2.9
1,000,000 - 1,249,999	44	52	-15.4	159	142	12.0
1,250,000 - 1,499,999	37	53	-30.2	131	153	-14.4
1,500,000 +	67	71	-5.6	280	267	4.9
<b>TOTALS</b>	<b>1287</b>	<b>1662</b>	<b>-22.6</b>	<b>4595</b>	<b>4307</b>	<b>6.7</b>

## INVENTORY TREND



## SALES TREND

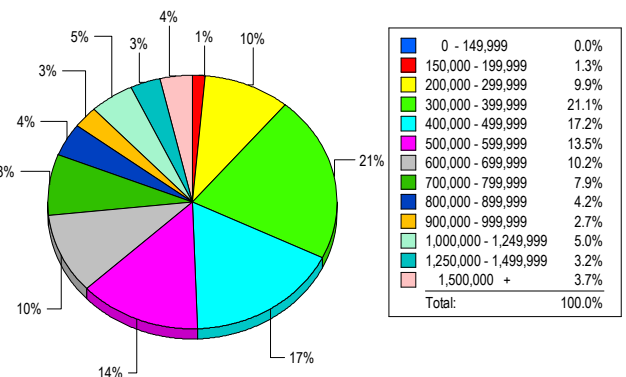
Contracts Ratified Per Month



## CONTRACTS

Price Range	New This Month			Year-To-Date		
	2008	2007	% Change	2008	2007	% Change
0 - 149,999	5	0	500.0	9	1	800.0
150,000 - 199,999	17	1	1,600.0	74	5	1,380.0
200,000 - 299,999	125	43	190.7	511	248	106.0
300,000 - 399,999	172	178	-3.4	892	968	-7.9
400,000 - 499,999	114	195	-41.5	660	1,077	-38.7
500,000 - 599,999	99	129	-23.3	489	704	-30.5
600,000 - 699,999	66	79	-16.5	342	531	-35.6
700,000 - 799,999	37	67	-44.8	253	372	-32.0
800,000 - 899,999	28	41	-31.7	171	242	-29.3
900,000 - 999,999	15	33	-54.5	102	144	-29.2
1,000,000 - 1,249,999	22	30	-26.7	116	164	-29.3
1,250,000 - 1,499,999	23	26	-11.5	128	145	-11.7
1,500,000 +	25	34	-26.5	136	194	-29.9
<b>TOTALS</b>	<b>748</b>	<b>856</b>	<b>-12.6</b>	<b>3883</b>	<b>4795</b>	<b>-19.0</b>

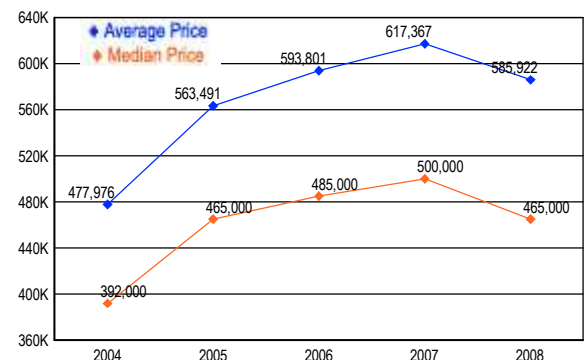
## MARKET BY PRICE RANGE



## SETTLEMENTS

Price Range	New This Month			Year-to-Date		
	2008	2007	% Change	2008	2007	% Change
0 - 149,999	0	0	0.0	3	1	200.0
150,000 - 199,999	9	2	350.0	42	6	600.0
200,000 - 299,999	69	49	40.8	354	221	60.2
300,000 - 399,999	147	141	4.3	739	902	-18.1
400,000 - 499,999	120	188	-36.2	568	984	-42.3
500,000 - 599,999	94	122	-23.0	384	632	-39.2
600,000 - 699,999	71	94	-24.5	304	469	-35.2
700,000 - 799,999	55	79	-30.4	193	308	-37.3
800,000 - 899,999	29	57	-49.1	134	205	-34.6
900,000 - 999,999	19	34	-44.1	80	127	-37.0
1,000,000 - 1,249,999	35	41	-14.6	113	148	-23.6
1,250,000 - 1,499,999	22	24	-8.3	88	105	-16.2
1,500,000 +	26	39	-33.3	111	163	-31.9
<b>TOTALS</b>	<b>696</b>	<b>870</b>	<b>-20.0</b>	<b>3113</b>	<b>4271</b>	<b>-27.1</b>

## AVERAGE & MEDIAN PRICE



DATA SOURCE: Metropolitan Regional Information Systems, Inc. (MRIS)

NOTES: Properties not listed through this Multiple Listing Service are not reflected. The term "sales" represents ratified purchase contracts. Current year information is preliminary and subject to revision. Current year-to-date contract information may not equal the sum of the monthly contract totals reported in