

# MONTGOMERY COUNTY

## Residential Market Report



# HOUSING REPORT

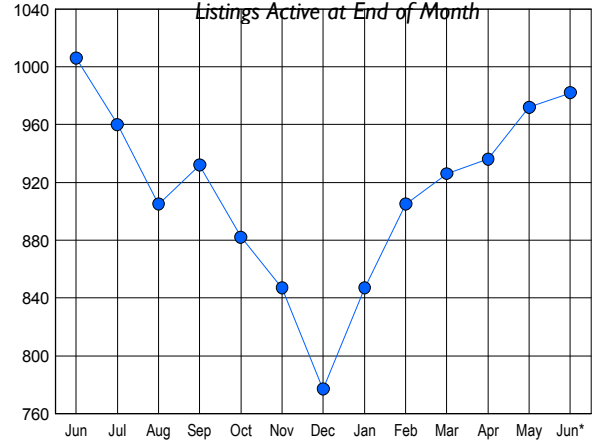
## CONDO & COOPS

June 2010

### LISTINGS

Price Range	New This Month			Total Actives		
	2010	2009	% Change	2010	2009	% Change
0 - 149,999	116	67	73.1	265	250	6.0
150,000 - 199,999	65	57	14.0	184	206	-10.7
200,000 - 299,999	104	93	11.8	273	277	-1.4
300,000 - 399,999	56	58	-3.4	130	137	-5.1
400,000 - 499,999	20	23	-13.0	55	54	1.9
500,000 - 599,999	9	8	12.5	20	30	-33.3
600,000 - 699,999	6	4	50.0	6	6	0.0
700,000 - 799,999	2	2	0.0	8	8	0.0
800,000 - 899,999	1	2	-50.0	6	12	-50.0
900,000 - 999,999	1	2	-50.0	8	4	100.0
1,000,000 - 1,249,999	2	0	200.0	10	3	233.3
1,250,000 - 1,499,999	0	1	-100.0	4	7	-42.9
1,500,000 +	0	3	-100.0	13	12	8.3
<b>TOTALS</b>	<b>382</b>	<b>320</b>	<b>19.4</b>	<b>982</b>	<b>1006</b>	<b>-2.4</b>

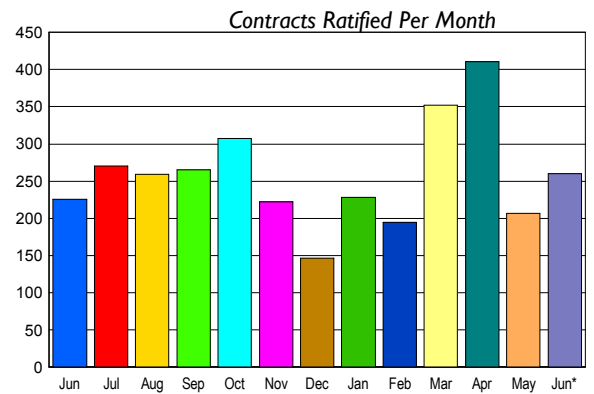
### INVENTORY TREND



### CONTRACTS

Price Range	New This Month			Year-To-Date		
	2010	2009	% Change	2010	2009	% Change
0 - 149,999	82	61	34.4	448	259	73.0
150,000 - 199,999	50	50	0.0	263	221	19.0
200,000 - 299,999	63	56	12.5	357	284	25.7
300,000 - 399,999	34	45	-24.4	226	194	16.5
400,000 - 499,999	13	7	85.7	69	53	30.2
500,000 - 599,999	9	5	80.0	43	28	53.6
600,000 - 699,999	4	1	300.0	15	15	0.0
700,000 - 799,999	3	1	200.0	18	4	350.0
800,000 - 899,999	2	0	200.0	8	3	166.7
900,000 - 999,999	0	0	0.0	4	1	300.0
1,000,000 - 1,249,999	0	0	0.0	8	3	166.7
1,250,000 - 1,499,999	0	0	0.0	1	3	-66.7
1,500,000 +	0	0	0.0	4	2	100.0
<b>TOTALS</b>	<b>260</b>	<b>226</b>	<b>15.0</b>	<b>1464</b>	<b>1070</b>	<b>36.8</b>

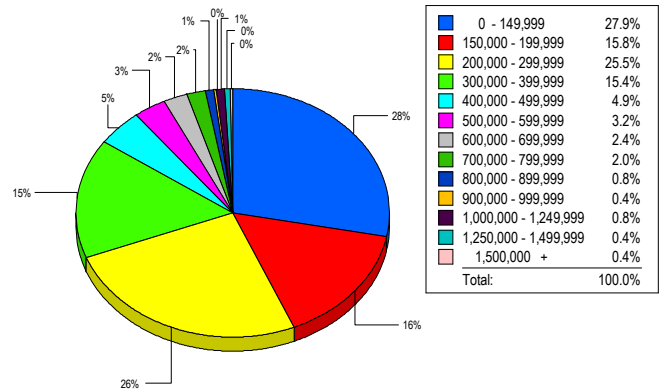
### SALES TREND



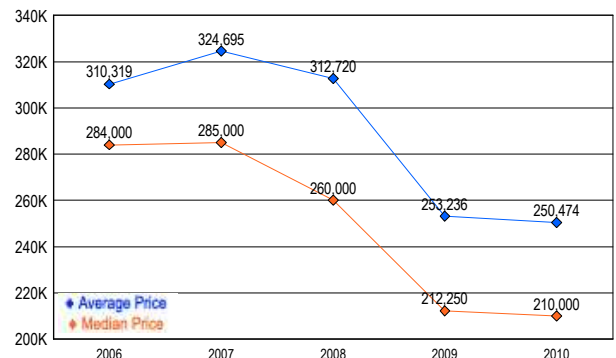
### SETTLEMENTS

Price Range	New This Month			Year-To-Date		
	2010	2009	% Change	2010	2009	% Change
0 - 149,999	69	43	60.5	366	178	105.6
150,000 - 199,999	39	26	50.0	181	151	19.9
200,000 - 299,999	63	53	18.9	300	238	26.1
300,000 - 399,999	38	32	18.8	193	143	35.0
400,000 - 499,999	12	16	-25.0	63	38	65.8
500,000 - 599,999	8	2	300.0	34	23	47.8
600,000 - 699,999	6	4	50.0	17	7	142.9
700,000 - 799,999	5	3	66.7	14	5	180.0
800,000 - 899,999	2	0	200.0	4	0	-400.0
900,000 - 999,999	1	0	100.0	3	1	200.0
1,000,000 - 1,249,999	2	1	100.0	8	1	700.0
1,250,000 - 1,499,999	1	0	100.0	2	5	-60.0
1,500,000 +	1	0	100.0	2	3	-33.3
<b>TOTALS</b>	<b>247</b>	<b>180</b>	<b>37.2</b>	<b>1187</b>	<b>793</b>	<b>49.7</b>

### MARKET BY PRICE RANGE



### AVERAGE & MEDIAN PRICE



DATA SOURCE: Metropolitan Regional Information Systems, Inc. (MRIS)

NOTES: Properties not listed through this Multiple Listing Service are not reflected. The term "sales" represents ratified purchase contracts. Current year information is preliminary and subject to revision. Current year- to- date contract information may not equal the sum of the monthly contract totals reported in