

# MONTGOMERY COUNTY

## Residential Market Report



# HOUSING REPORT

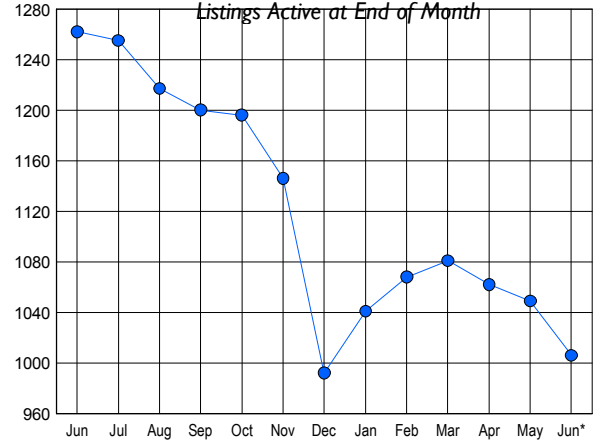
## CONDO & COOPS

### June 2009

### LISTINGS

Price Range	New This Month			Total Actives		
	2009	2008	% Change	2009	2008	% Change
0 - 149,999	67	28	139.3	250	133	88.0
150,000 - 199,999	57	63	-9.5	206	269	-23.4
200,000 - 299,999	93	128	-27.3	277	495	-44.0
300,000 - 399,999	58	73	-20.5	137	212	-35.4
400,000 - 499,999	23	27	-14.8	54	61	-11.5
500,000 - 599,999	8	15	-46.7	30	41	-26.8
600,000 - 699,999	4	3	33.3	6	14	-57.1
700,000 - 799,999	2	2	0.0	8	7	14.3
800,000 - 899,999	2	2	0.0	12	7	71.4
900,000 - 999,999	2	0	200.0	4	1	300.0
1,000,000 - 1,249,999	0	2	-100.0	3	6	-50.0
1,250,000 - 1,499,999	1	2	-50.0	7	6	16.7
1,500,000 +	3	2	50.0	12	10	20.0
<b>TOTALS</b>	<b>320</b>	<b>347</b>	<b>-7.8</b>	<b>1006</b>	<b>1262</b>	<b>-20.3</b>

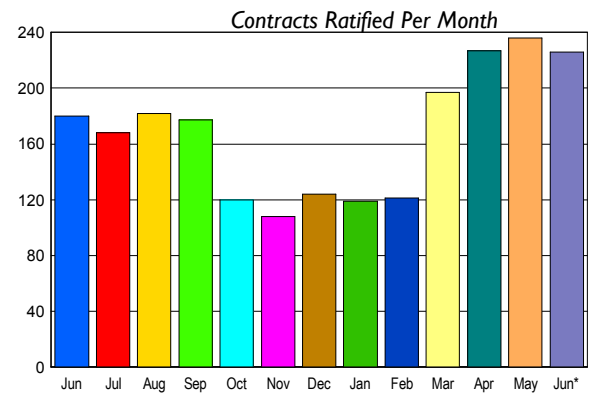
### INVENTORY TREND



### CONTRACTS

Price Range	New This Month			Year-To-Date		
	2009	2008	% Change	2009	2008	% Change
0 - 149,999	61	12	408.3	259	57	354.4
150,000 - 199,999	50	35	42.9	221	143	54.5
200,000 - 299,999	56	71	-21.1	284	392	-27.6
300,000 - 399,999	45	32	40.6	194	207	-6.3
400,000 - 499,999	7	17	-58.8	53	70	-24.3
500,000 - 599,999	5	5	0.0	28	42	-33.3
600,000 - 699,999	1	3	-66.7	15	19	-21.1
700,000 - 799,999	1	2	-50.0	4	10	-60.0
800,000 - 899,999	0	2	-100.0	3	5	-40.0
900,000 - 999,999	0	0	0.0	1	2	-50.0
1,000,000 - 1,249,999	0	0	0.0	3	6	-50.0
1,250,000 - 1,499,999	0	1	-100.0	3	2	50.0
1,500,000 +	0	0	0.0	2	8	-75.0
<b>TOTALS</b>	<b>226</b>	<b>180</b>	<b>25.6</b>	<b>1070</b>	<b>963</b>	<b>11.1</b>

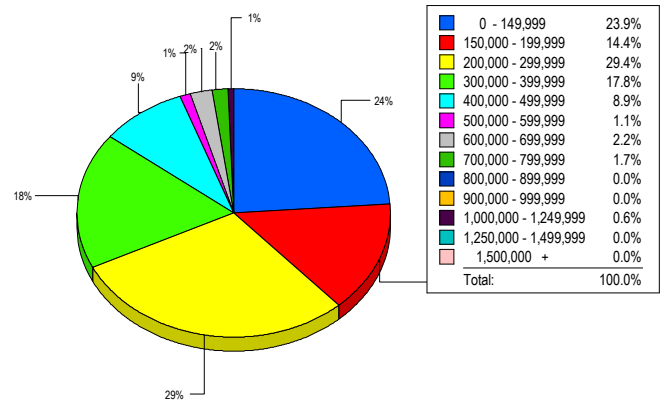
### SALES TREND



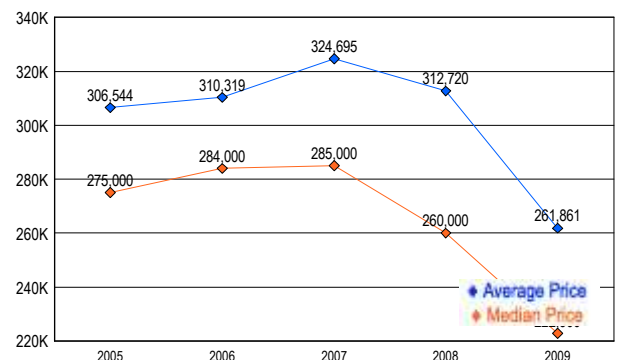
### SETTLEMENTS

Price Range	New This Month			Year-To-Date		
	2009	2008	% Change	2009	2008	% Change
0 - 149,999	43	6	616.7	178	46	287.0
150,000 - 199,999	26	23	13.0	151	98	54.1
200,000 - 299,999	53	64	-17.2	238	325	-26.8
300,000 - 399,999	32	29	10.3	143	174	-17.8
400,000 - 499,999	16	16	0.0	38	54	-29.6
500,000 - 599,999	2	6	-66.7	23	40	-42.5
600,000 - 699,999	4	3	33.3	7	11	-36.4
700,000 - 799,999	3	3	0.0	5	9	-44.4
800,000 - 899,999	0	1	-100.0	0	2	-100.0
900,000 - 999,999	0	0	0.0	1	1	0.0
1,000,000 - 1,249,999	1	3	-66.7	1	7	-85.7
1,250,000 - 1,499,999	0	0	0.0	5	0	-500.0
1,500,000 +	0	1	-100.0	3	6	-50.0
<b>TOTALS</b>	<b>180</b>	<b>155</b>	<b>16.1</b>	<b>793</b>	<b>773</b>	<b>2.6</b>

### MARKET BY PRICE RANGE



### AVERAGE & MEDIAN PRICE



DATA SOURCE: Metropolitan Regional Information Systems, Inc. (MRIS)

NOTES: Properties not listed through this Multiple Listing Service are not reflected. The term "sales" represents ratified purchase contracts. Current year information is preliminary and subject to revision. Current year-to-date contract information may not equal the sum of the monthly contract totals reported in