

# MONTGOMERY COUNTY

## Residential Market Report



# HOUSING REPORT

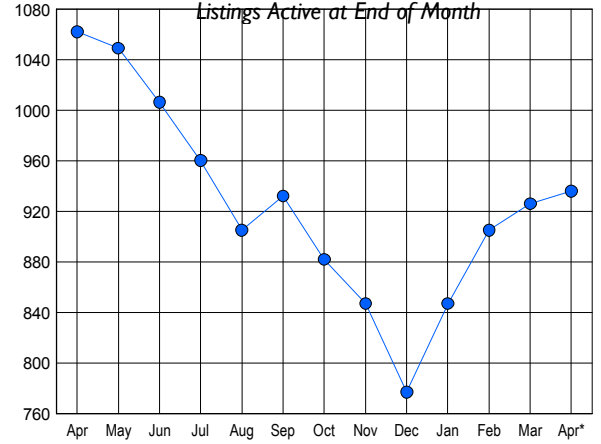
## CONDO & COOPS

April 2010

### LISTINGS

Price Range	New This Month			Total Actives		
	2010	2009	% Change	2010	2009	% Change
0 - 149,999	99	63	57.1	224	257	-12.8
150,000 - 199,999	89	54	64.8	174	231	-24.7
200,000 - 299,999	115	94	22.3	259	283	-8.5
300,000 - 399,999	86	52	65.4	144	142	1.4
400,000 - 499,999	21	16	31.3	55	54	1.9
500,000 - 599,999	18	10	80.0	22	39	-43.6
600,000 - 699,999	1	7	-85.7	5	9	-44.4
700,000 - 799,999	6	3	100.0	11	9	22.2
800,000 - 899,999	3	1	200.0	6	9	-33.3
900,000 - 999,999	2	1	100.0	7	3	133.3
1,000,000 - 1,249,999	4	0	400.0	11	7	57.1
1,250,000 - 1,499,999	1	0	100.0	5	6	-16.7
1,500,000 +	4	3	33.3	13	13	0.0
<b>TOTALS</b>	<b>449</b>	<b>304</b>	<b>47.7</b>	<b>936</b>	<b>1062</b>	<b>-11.9</b>

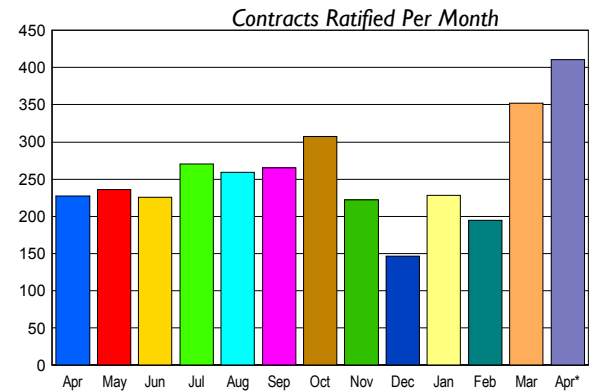
### INVENTORY TREND



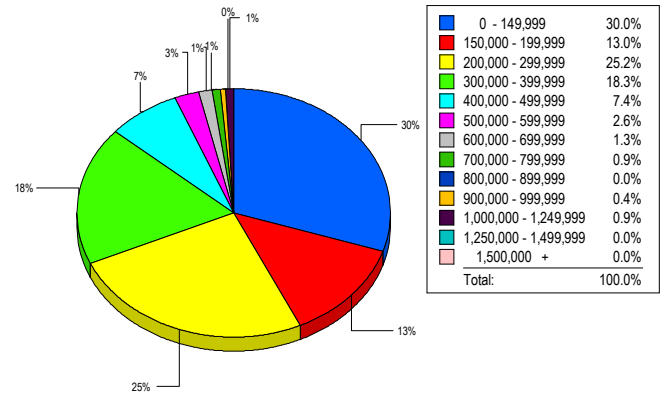
### CONTRACTS

Price Range	New This Month			Year-To-Date		
	2010	2009	% Change	2010	2009	% Change
0 - 149,999	106	54	96.3	339	152	123.0
150,000 - 199,999	81	45	80.0	209	127	64.6
200,000 - 299,999	114	62	83.9	274	183	49.7
300,000 - 399,999	70	43	62.8	172	122	41.0
400,000 - 499,999	16	6	166.7	47	28	67.9
500,000 - 599,999	7	7	0.0	24	14	71.4
600,000 - 699,999	5	6	-16.7	11	10	10.0
700,000 - 799,999	5	1	400.0	11	2	450.0
800,000 - 899,999	2	1	100.0	5	1	400.0
900,000 - 999,999	0	0	0.0	3	1	200.0
1,000,000 - 1,249,999	1	1	0.0	6	2	200.0
1,250,000 - 1,499,999	1	0	100.0	1	2	-50.0
1,500,000 +	3	1	200.0	3	2	50.0
<b>TOTALS</b>	<b>411</b>	<b>227</b>	<b>81.1</b>	<b>1105</b>	<b>646</b>	<b>71.1</b>

### SALES TREND



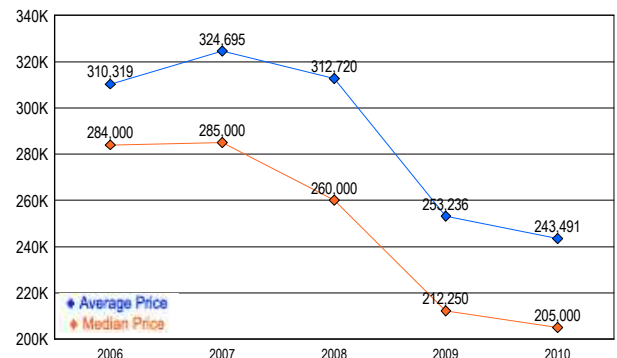
### MARKET BY PRICE RANGE



### SETTLEMENTS

Price Range	New This Month			Year-To-Date		
	2010	2009	% Change	2010	2009	% Change
0 - 149,999	69	26	165.4	227	88	158.0
150,000 - 199,999	30	29	3.4	110	93	18.3
200,000 - 299,999	58	37	56.8	159	124	28.2
300,000 - 399,999	42	24	75.0	114	72	58.3
400,000 - 499,999	17	1	1600.0	43	18	138.9
500,000 - 599,999	6	1	500.0	19	8	137.5
600,000 - 699,999	3	1	200.0	10	2	400.0
700,000 - 799,999	2	1	100.0	7	2	250.0
800,000 - 899,999	0	0	0.0	1	0	-100.0
900,000 - 999,999	1	0	100.0	2	0	-200.0
1,000,000 - 1,249,999	2	0	200.0	4	0	-400.0
1,250,000 - 1,499,999	0	0	0.0	1	3	-66.7
1,500,000 +	0	1	-100.0	0	3	-100.0
<b>TOTALS</b>	<b>230</b>	<b>121</b>	<b>90.1</b>	<b>697</b>	<b>413</b>	<b>68.8</b>

### AVERAGE & MEDIAN PRICE



DATA SOURCE: Metropolitan Regional Information Systems, Inc. (MRIS)

NOTES: Properties not listed through this Multiple Listing Service are not reflected. The term "sales" represents ratified purchase contracts. Current year information is preliminary and subject to revision. Current year-to-date contract information may not equal the sum of the monthly contract totals reported in