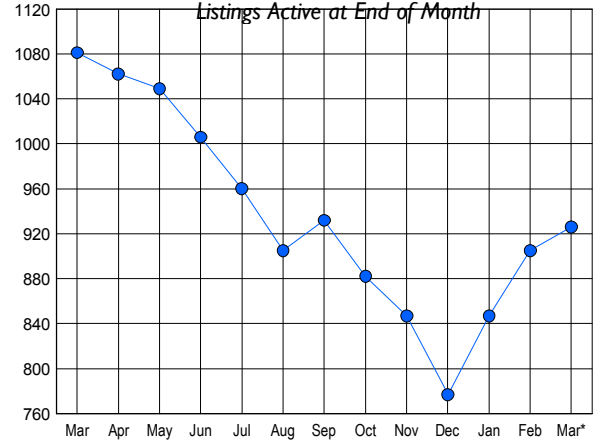


LISTINGS

Price Range	New This Month			Total Actives		
	2010	2009	% Change	2010	2009	% Change
0 - 149,999	103	72	43.1	213	247	-13.8
150,000 - 199,999	86	60	43.3	167	241	-30.7
200,000 - 299,999	143	80	78.8	269	275	-2.2
300,000 - 399,999	87	60	45.0	156	157	-0.6
400,000 - 499,999	23	18	27.8	46	52	-11.5
500,000 - 599,999	17	10	70.0	23	43	-46.5
600,000 - 699,999	4	2	100.0	8	8	0.0
700,000 - 799,999	3	2	50.0	7	10	-30.0
800,000 - 899,999	1	3	-66.7	6	11	-45.5
900,000 - 999,999	2	0	200.0	7	4	75.0
1,000,000 - 1,249,999	0	1	-100.0	5	11	-54.5
1,250,000 - 1,499,999	1	0	100.0	6	8	-25.0
1,500,000 +	2	2	0.0	13	14	-7.1
TOTALS	472	310	52.3	926	1081	-14.3

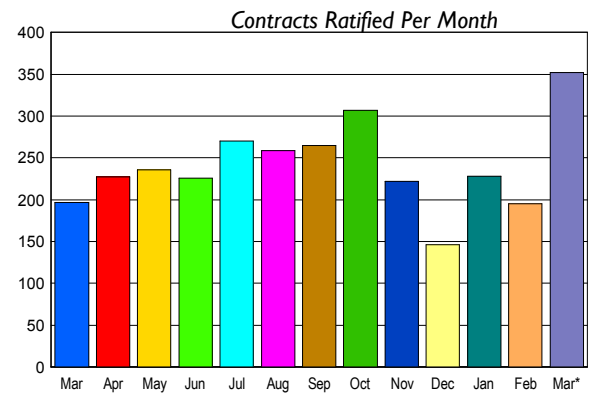
INVENTORY TREND



CONTRACTS

Price Range	New This Month			Year-To-Date		
	2010	2009	% Change	2010	2009	% Change
0 - 149,999	116	54	114.8	247	102	142.2
150,000 - 199,999	66	39	69.2	137	87	57.5
200,000 - 299,999	87	49	77.6	170	116	46.6
300,000 - 399,999	44	43	2.3	104	81	28.4
400,000 - 499,999	19	7	171.4	31	23	34.8
500,000 - 599,999	8	2	300.0	18	7	157.1
600,000 - 699,999	1	2	-50.0	5	3	66.7
700,000 - 799,999	5	1	400.0	6	1	500.0
800,000 - 899,999	2	0	200.0	3	0	300.0
900,000 - 999,999	2	0	200.0	2	1	100.0
1,000,000 - 1,249,999	2	0	200.0	5	0	500.0
1,250,000 - 1,499,999	0	0	0.0	0	2	-100.0
1,500,000 +	0	0	0.0	0	1	-100.0
TOTALS	352	197	78.7	728	424	71.7

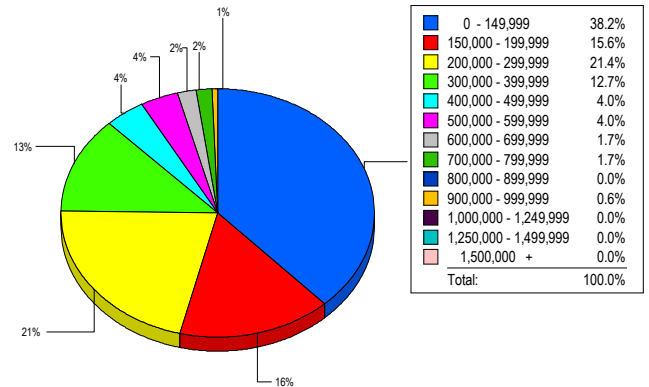
SALES TREND



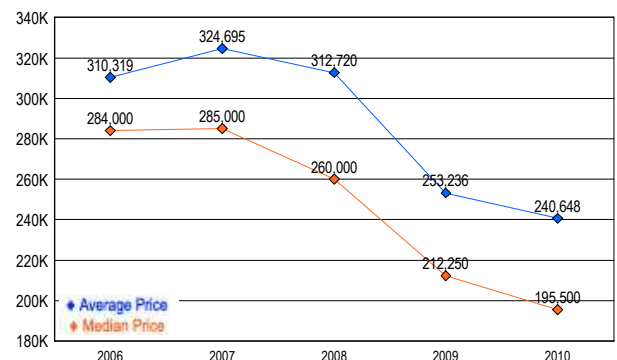
SETTLEMENTS

Price Range	New This Month			Year-To-Date		
	2010	2009	% Change	2010	2009	% Change
0 - 149,999	66	25	164.0	150	59	154.2
150,000 - 199,999	27	21	28.6	77	58	32.8
200,000 - 299,999	37	28	32.1	98	86	14.0
300,000 - 399,999	22	22	0.0	67	47	42.6
400,000 - 499,999	7	8	-12.5	23	17	35.3
500,000 - 599,999	7	5	40.0	13	7	85.7
600,000 - 699,999	3	1	200.0	7	1	600.0
700,000 - 799,999	3	0	300.0	5	1	400.0
800,000 - 899,999	0	0	0.0	1	0	-100.0
900,000 - 999,999	1	0	100.0	1	0	-100.0
1,000,000 - 1,249,999	0	0	0.0	2	0	-200.0
1,250,000 - 1,499,999	0	1	-100.0	1	3	-66.7
1,500,000 +	0	0	0.0	0	2	-100.0
TOTALS	173	111	55.9	445	281	58.4

MARKET BY PRICE RANGE



AVERAGE & MEDIAN PRICE



DATA SOURCE: Metropolitan Regional Information Systems, Inc. (MRIS)

NOTES: Properties not listed through this Multiple Listing Service are not reflected. The term "sales" represents ratified purchase contracts. Current year information is preliminary and subject to revision. Current year-to-date contract information may not equal the sum of the monthly contract totals reported in