

MONTGOMERY COUNTY

Residential Market Report



HOUSING REPORT

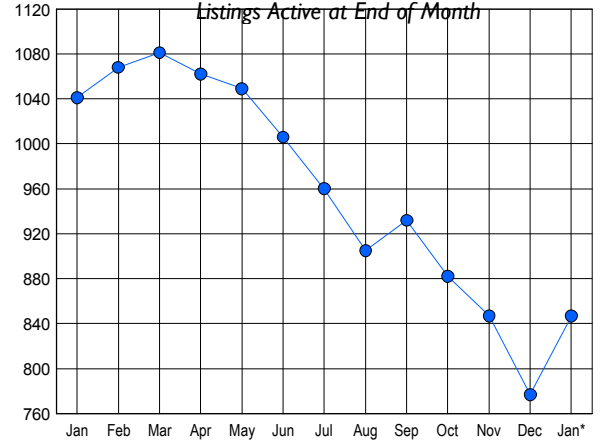
CONDO & COOPS

January 2010

LISTINGS

Price Range	New This Month			Total Actives		
	2010	2009	% Change	2010	2009	% Change
0 - 149,999	79	39	102.6	214	203	5.4
150,000 - 199,999	60	55	9.1	165	250	-34.0
200,000 - 299,999	81	77	5.2	238	292	-18.5
300,000 - 399,999	44	42	4.8	111	141	-21.3
400,000 - 499,999	21	19	10.5	45	58	-22.4
500,000 - 599,999	10	10	0.0	15	34	-55.9
600,000 - 699,999	6	5	20.0	9	10	-10.0
700,000 - 799,999	1	5	-80.0	12	10	20.0
800,000 - 899,999	2	2	0.0	5	8	-37.5
900,000 - 999,999	3	0	300.0	10	3	233.3
1,000,000 - 1,249,999	3	2	50.0	7	7	0.0
1,250,000 - 1,499,999	0	1	-100.0	4	13	-69.2
1,500,000 +	1	3	-66.7	12	12	0.0
TOTALS	311	260	19.6	847	1041	-18.6

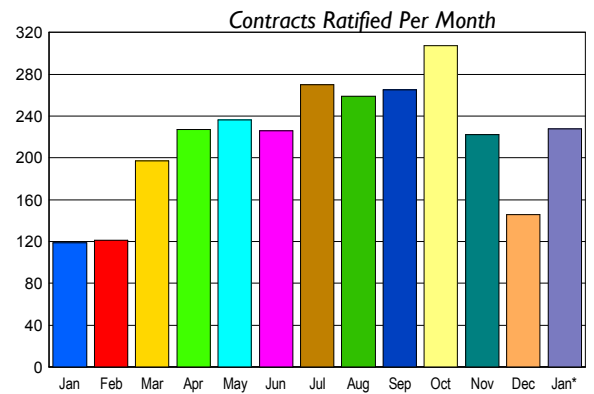
INVENTORY TREND



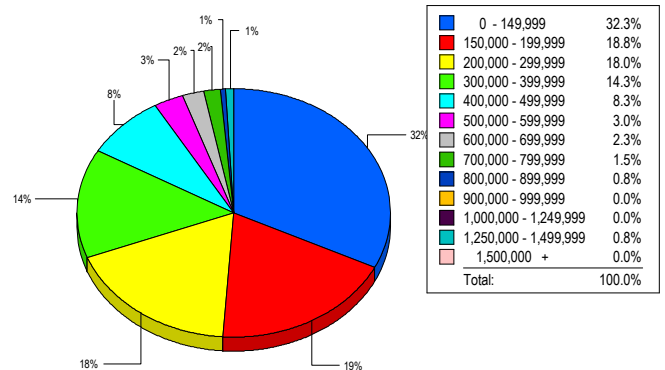
CONTRACTS

Price Range	New This Month			Year-To-Date		
	2010	2009	% Change	2010	2009	% Change
0 - 149,999	83	23	260.9	83	23	260.9
150,000 - 199,999	41	31	32.3	41	31	32.3
200,000 - 299,999	51	34	50.0	51	34	50.0
300,000 - 399,999	32	16	100.0	32	16	100.0
400,000 - 499,999	6	11	-45.5	6	11	-45.5
500,000 - 599,999	8	1	700.0	8	1	700.0
600,000 - 699,999	3	1	200.0	3	1	200.0
700,000 - 799,999	1	0	100.0	1	0	100.0
800,000 - 899,999	1	0	100.0	1	0	100.0
900,000 - 999,999	0	0	0.0	0	0	0.0
1,000,000 - 1,249,999	2	0	200.0	2	0	200.0
1,250,000 - 1,499,999	0	1	-100.0	0	1	-100.0
1,500,000 +	0	1	-100.0	0	1	-100.0
TOTALS	228	119	91.6	228	119	91.6

SALES TREND



MARKET BY PRICE RANGE



SETTLEMENTS

Price Range	New This Month			Year-To-Date		
	2010	2009	% Change	2010	2009	% Change
0 - 149,999	43	14	207.1	43	14	207.1
150,000 - 199,999	25	11	127.3	25	11	127.3
200,000 - 299,999	24	31	-22.6	24	31	-22.6
300,000 - 399,999	19	16	18.8	19	16	18.8
400,000 - 499,999	11	2	450.0	11	2	450.0
500,000 - 599,999	4	2	100.0	4	2	100.0
600,000 - 699,999	3	0	300.0	3	0	-300.0
700,000 - 799,999	2	1	100.0	2	1	100.0
800,000 - 899,999	1	0	100.0	1	0	-100.0
900,000 - 999,999	0	0	0.0	0	0	0.0
1,000,000 - 1,249,999	0	0	0.0	0	0	0.0
1,250,000 - 1,499,999	1	1	0.0	1	1	0.0
1,500,000 +	0	1	-100.0	0	1	-100.0
TOTALS	133	79	68.4	133	79	68.4

AVERAGE & MEDIAN PRICE



DATA SOURCE: Metropolitan Regional Information Systems, Inc. (MRIS)

NOTES: Properties not listed through this Multiple Listing Service are not reflected. The term "sales" represents ratified purchase contracts. Current year information is preliminary and subject to revision. Current year-to-date contract information may not equal the sum of the monthly contract totals reported in