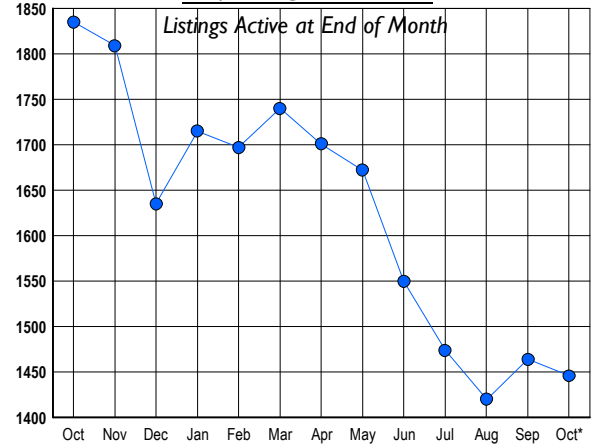




## LISTINGS

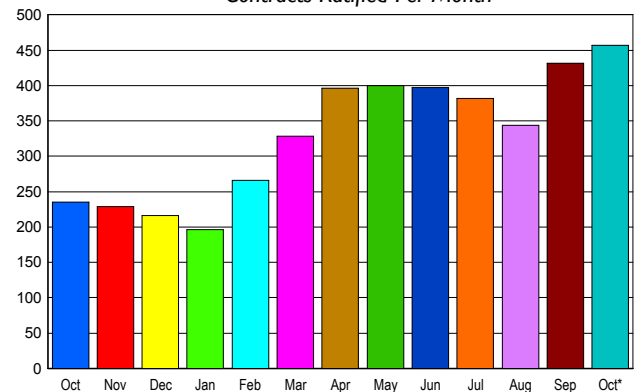
Prices Range	New This Month			Total Actives		
	2009	2008	% Change	2009	2008	% Change
0 - 149,999	59	23	156.5	154	87	77.0
150,000 - 199,999	63	36	75.0	148	126	17.5
200,000 - 299,999	109	122	-10.7	277	395	-29.9
300,000 - 399,999	90	85	5.9	208	371	-43.9
400,000 - 499,999	51	60	-15.0	107	220	-51.4
500,000 - 599,999	34	41	-17.1	73	130	-43.8
600,000 - 699,999	35	30	16.7	49	85	-42.4
700,000 - 799,999	27	20	35.0	69	82	-15.9
800,000 - 899,999	35	28	25.0	49	64	-23.4
900,000 - 999,999	17	20	-15.0	30	45	-33.3
1,000,000 - 1,249,999	16	21	-23.8	39	49	-20.4
1,250,000 - 1,499,999	25	13	92.3	73	42	73.8
1,500,000 +	44	26	69.2	170	139	22.3
<b>TOTALS</b>	<b>605</b>	<b>525</b>	<b>15.2</b>	<b>1446</b>	<b>1835</b>	<b>-21.2</b>

## INVENTORY TREND



## SALES TREND

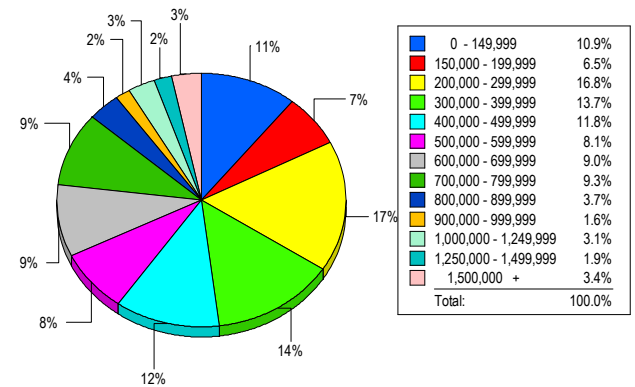
Contracts Ratified Per Month



## CONTRACTS

Price Range	New This Month			Year-To-Date		
	2009	2008	% Change	2009	2008	% Change
0 - 149,999	57	10	470.0	348	51	582.4
150,000 - 199,999	49	18	172.2	265	102	159.8
200,000 - 299,999	78	70	11.4	597	442	35.1
300,000 - 399,999	62	37	67.6	425	453	-6.2
400,000 - 499,999	38	14	171.4	344	252	36.5
500,000 - 599,999	30	21	42.9	241	218	10.6
600,000 - 699,999	37	15	146.7	242	219	10.5
700,000 - 799,999	25	8	212.5	241	202	19.3
800,000 - 899,999	26	13	100.0	165	171	-3.5
900,000 - 999,999	10	8	25.0	99	102	-2.9
1,000,000 - 1,249,999	13	6	116.7	105	101	4.0
1,250,000 - 1,499,999	9	8	12.5	84	106	-20.8
1,500,000 +	23	7	228.6	135	144	-6.3
<b>TOTALS</b>	<b>457</b>	<b>235</b>	<b>94.5</b>	<b>3291</b>	<b>2563</b>	<b>28.4</b>

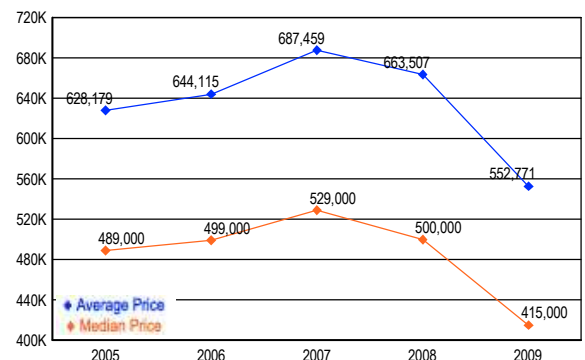
## MARKET BY PRICE RANGE



## SETTLEMENTS

Price Range	New This Month			Year-to-Date		
	2009	2008	% Change	2009	2008	% Change
0 - 149,999	35	6	483.3	288	45	540.0
150,000 - 199,999	21	8	162.5	181	69	162.3
200,000 - 299,999	54	39	38.5	476	373	27.6
300,000 - 399,999	44	36	22.2	402	430	-6.5
400,000 - 499,999	38	16	137.5	253	239	5.9
500,000 - 599,999	26	22	18.2	226	197	14.7
600,000 - 699,999	29	13	123.1	214	217	-1.4
700,000 - 799,999	30	27	11.1	221	204	8.3
800,000 - 899,999	12	15	-20.0	138	165	-16.4
900,000 - 999,999	5	12	-58.3	88	92	-4.3
1,000,000 - 1,249,999	10	12	-16.7	110	131	-16.0
1,250,000 - 1,499,999	6	11	-45.5	67	86	-22.1
1,500,000 +	11	12	-8.3	112	148	-24.3
<b>TOTALS</b>	<b>321</b>	<b>229</b>	<b>40.2</b>	<b>2776</b>	<b>2396</b>	<b>15.9</b>

## AVERAGE & MEDIAN PRICE



DATA SOURCE: Metropolitan Regional Information Systems, Inc. (MRIS)

NOTES: Properties not listed through this Multiple Listing Service are not reflected. The term "sales" represents ratified purchase contracts. Current year information is preliminary and subject to revision. Current year-to-date contract information may not equal the sum of the monthly contract totals reported in