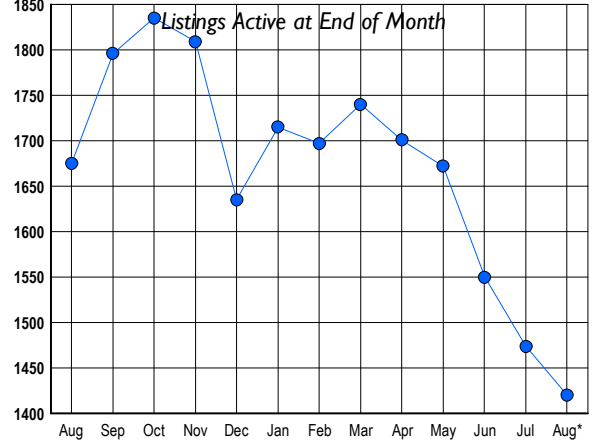




LISTINGS

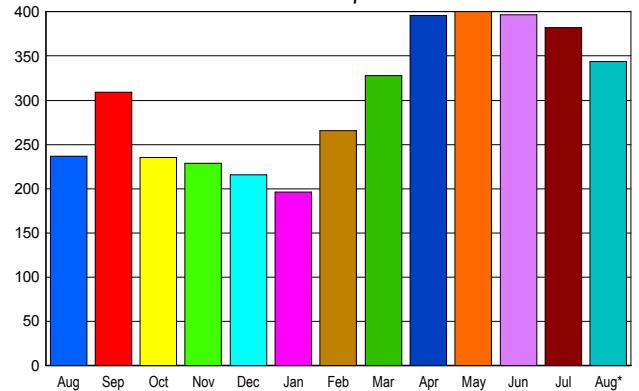
| Prices Range | New This Month | | | Total Actives | | |
|-----------------------|----------------|------------|-------------|---------------|-------------|--------------|
| | 2009 | 2008 | % Change | 2009 | 2008 | % Change |
| 0 - 149,999 | 65 | 24 | 170.8 | 163 | 62 | 162.9 |
| 150,000 - 199,999 | 48 | 26 | 84.6 | 150 | 101 | 48.5 |
| 200,000 - 299,999 | 94 | 90 | 4.4 | 256 | 345 | -25.8 |
| 300,000 - 399,999 | 73 | 118 | -38.1 | 227 | 392 | -42.1 |
| 400,000 - 499,999 | 53 | 59 | -10.2 | 120 | 227 | -47.1 |
| 500,000 - 599,999 | 26 | 42 | -38.1 | 70 | 134 | -47.8 |
| 600,000 - 699,999 | 24 | 18 | 33.3 | 47 | 75 | -37.3 |
| 700,000 - 799,999 | 27 | 20 | 35.0 | 63 | 70 | -10.0 |
| 800,000 - 899,999 | 8 | 10 | -20.0 | 41 | 49 | -16.3 |
| 900,000 - 999,999 | 14 | 11 | 27.3 | 39 | 32 | 21.9 |
| 1,000,000 - 1,249,999 | 6 | 12 | -50.0 | 40 | 42 | -4.8 |
| 1,250,000 - 1,499,999 | 9 | 12 | -25.0 | 52 | 31 | 67.7 |
| 1,500,000 + | 14 | 22 | -36.4 | 152 | 115 | 32.2 |
| TOTALS | 461 | 464 | -0.6 | 1420 | 1675 | -15.2 |

INVENTORY TREND



SALES TREND

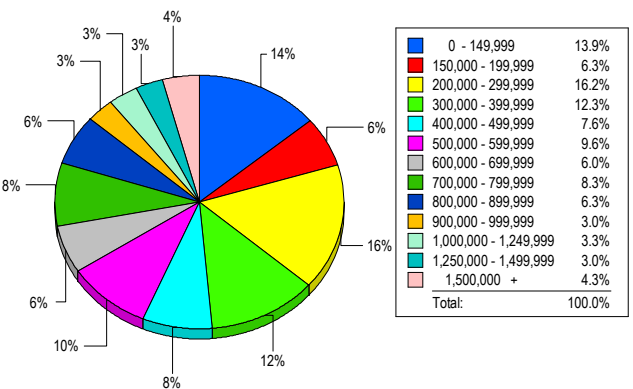
Contracts Ratified Per Month



CONTRACTS

| Price Range | New This Month | | | Year-To-Date | | |
|-----------------------|----------------|------------|-------------|--------------|-------------|-------------|
| | 2009 | 2008 | % Change | 2009 | 2008 | % Change |
| 0 - 149,999 | 47 | 7 | 571.4 | 246 | 30 | 720.0 |
| 150,000 - 199,999 | 33 | 13 | 153.8 | 186 | 77 | 141.6 |
| 200,000 - 299,999 | 72 | 44 | 63.6 | 466 | 335 | 39.1 |
| 300,000 - 399,999 | 43 | 54 | -20.4 | 310 | 386 | -19.7 |
| 400,000 - 499,999 | 33 | 30 | 10.0 | 258 | 223 | 15.7 |
| 500,000 - 599,999 | 18 | 15 | 20.0 | 187 | 172 | 8.7 |
| 600,000 - 699,999 | 22 | 9 | 144.4 | 182 | 187 | -2.7 |
| 700,000 - 799,999 | 26 | 17 | 52.9 | 184 | 169 | 8.9 |
| 800,000 - 899,999 | 9 | 12 | -25.0 | 132 | 138 | -4.3 |
| 900,000 - 999,999 | 7 | 8 | -12.5 | 77 | 86 | -10.5 |
| 1,000,000 - 1,249,999 | 5 | 3 | 66.7 | 82 | 85 | -3.5 |
| 1,250,000 - 1,499,999 | 9 | 11 | -18.2 | 66 | 88 | -25.0 |
| 1,500,000 + | 20 | 14 | 42.9 | 103 | 130 | -20.8 |
| TOTALS | 344 | 237 | 45.1 | 2479 | 2106 | 17.7 |

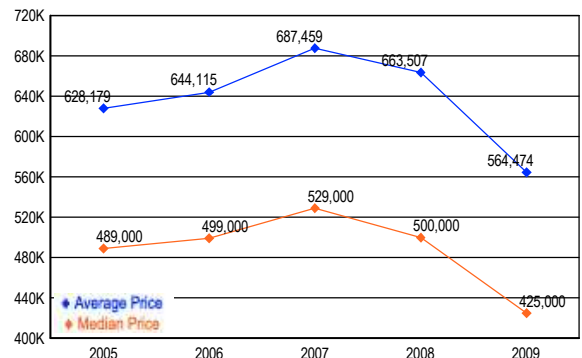
MARKET BY PRICE RANGE



SETTLEMENTS

| Price Range | New This Month | | | Year-to-Date | | |
|-----------------------|----------------|------------|-------------|--------------|-------------|-------------|
| | 2009 | 2008 | % Change | 2009 | 2008 | % Change |
| 0 - 149,999 | 42 | 7 | 500.0 | 213 | 29 | 634.5 |
| 150,000 - 199,999 | 19 | 5 | 280.0 | 135 | 47 | 187.2 |
| 200,000 - 299,999 | 49 | 40 | 22.5 | 355 | 290 | 22.4 |
| 300,000 - 399,999 | 37 | 42 | -11.9 | 314 | 340 | -7.6 |
| 400,000 - 499,999 | 23 | 18 | 27.8 | 181 | 187 | -3.2 |
| 500,000 - 599,999 | 29 | 14 | 107.1 | 184 | 157 | 17.2 |
| 600,000 - 699,999 | 18 | 25 | -28.0 | 162 | 188 | -13.8 |
| 700,000 - 799,999 | 25 | 17 | 47.1 | 161 | 158 | 1.9 |
| 800,000 - 899,999 | 19 | 19 | 0.0 | 115 | 137 | -16.1 |
| 900,000 - 999,999 | 9 | 6 | 50.0 | 72 | 76 | -5.3 |
| 1,000,000 - 1,249,999 | 10 | 12 | -16.7 | 89 | 109 | -18.3 |
| 1,250,000 - 1,499,999 | 9 | 11 | -18.2 | 56 | 63 | -11.1 |
| 1,500,000 + | 13 | 17 | -23.5 | 88 | 124 | -29.0 |
| TOTALS | 302 | 233 | 29.6 | 2125 | 1905 | 11.5 |

AVERAGE & MEDIAN PRICE



DATA SOURCE: Metropolitan Regional Information Systems, Inc. (MRIS)

NOTES: Properties not listed through this Multiple Listing Service are not reflected. The term "sales" represents ratified purchase contracts. Current year information is preliminary and subject to revision. Current year- to- date contract information may not equal the sum of the monthly contract totals reported in