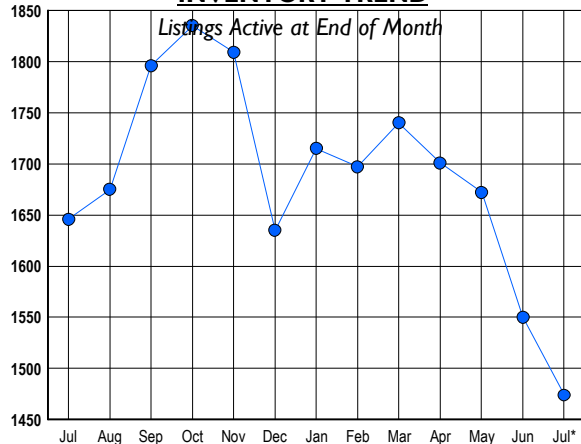


LISTINGS

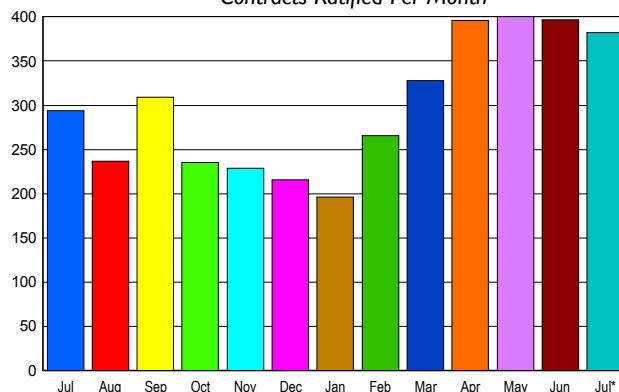
Prices Range	New This Month			Total Actives		
	2009	2008	% Change	2009	2008	% Change
0 - 149,999	37	14	164.3	140	49	185.7
150,000 - 199,999	42	19	121.1	150	98	53.1
200,000 - 299,999	81	114	-28.9	272	350	-22.3
300,000 - 399,999	78	106	-26.4	228	388	-41.2
400,000 - 499,999	60	61	-1.6	124	227	-45.4
500,000 - 599,999	42	35	20.0	70	133	-47.4
600,000 - 699,999	25	36	-30.6	56	69	-18.8
700,000 - 799,999	24	42	-42.9	78	66	18.2
800,000 - 899,999	25	21	19.0	52	57	-8.8
900,000 - 999,999	15	6	150.0	35	33	6.1
1,000,000 - 1,249,999	15	16	-6.3	45	37	21.6
1,250,000 - 1,499,999	18	12	50.0	59	36	63.9
1,500,000 +	30	26	15.4	165	103	60.2
TOTALS	492	508	-3.1	1474	1646	-10.4

INVENTORY TREND



SALES TREND

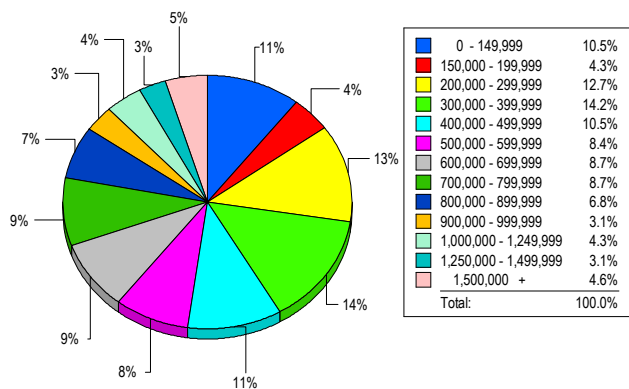
Contracts Ratified Per Month



CONTRACTS

Price Range	New This Month			Year-To-Date		
	2009	2008	% Change	2009	2008	% Change
0 - 149,999	56	6	833.3	214	23	830.4
150,000 - 199,999	24	20	20.0	159	68	133.8
200,000 - 299,999	84	53	58.5	401	294	36.4
300,000 - 399,999	45	64	-29.7	275	339	-18.9
400,000 - 499,999	43	27	59.3	229	196	16.8
500,000 - 599,999	31	13	138.5	171	156	9.6
600,000 - 699,999	22	27	-18.5	160	179	-10.6
700,000 - 799,999	19	24	-20.8	157	154	1.9
800,000 - 899,999	17	16	6.3	124	126	-1.6
900,000 - 999,999	12	5	140.0	72	78	-7.7
1,000,000 - 1,249,999	10	12	-16.7	78	83	-6.0
1,250,000 - 1,499,999	9	10	-10.0	56	76	-26.3
1,500,000 +	10	17	-41.2	81	120	-32.5
TOTALS	382	294	29.9	2177	1892	15.1

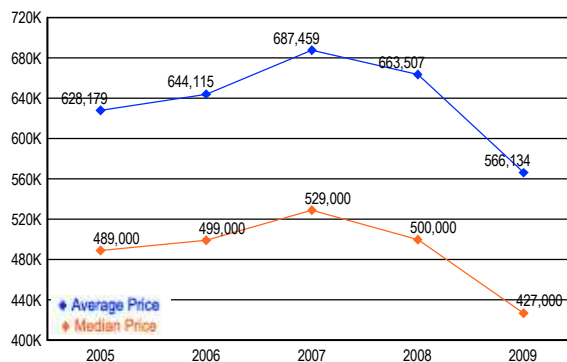
MARKET BY PRICE RANGE



SETTLEMENTS

Price Range	New This Month			Year-to-Date		
	2009	2008	% Change	2009	2008	% Change
0 - 149,999	34	1	3,300.0	167	22	659.1
150,000 - 199,999	14	4	250.0	114	39	192.3
200,000 - 299,999	41	38	7.9	299	241	24.1
300,000 - 399,999	46	45	2.2	270	289	-6.6
400,000 - 499,999	34	19	78.9	154	165	-6.7
500,000 - 599,999	27	19	42.1	151	142	6.3
600,000 - 699,999	28	29	-3.4	144	162	-11.1
700,000 - 799,999	28	21	33.3	135	140	-3.6
800,000 - 899,999	22	19	15.8	94	117	-19.7
900,000 - 999,999	10	10	0.0	63	68	-7.4
1,000,000 - 1,249,999	14	17	-17.6	76	96	-20.8
1,250,000 - 1,499,999	10	8	25.0	46	52	-11.5
1,500,000 +	15	16	-6.3	72	106	-32.1
TOTALS	323	246	31.3	1785	1639	8.9

AVERAGE & MEDIAN PRICE



DATA SOURCE: Metropolitan Regional Information Systems, Inc. (MRIS)

NOTES: Properties not listed through this Multiple Listing Service are not reflected. The term "sales" represents ratified purchase contracts. Current year information is preliminary and subject to revision. Current year-to-date contract information may not equal the sum of the monthly contract totals reported in