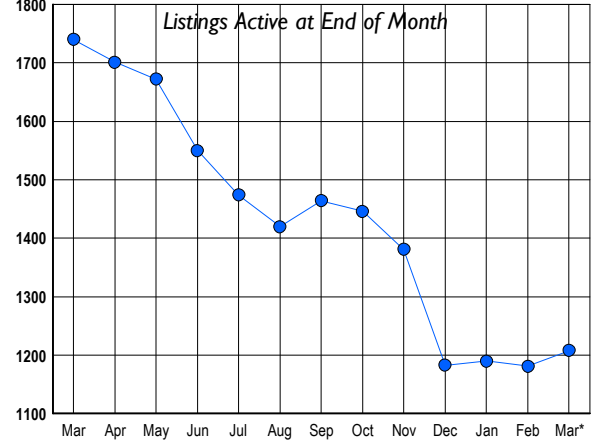


LISTINGS

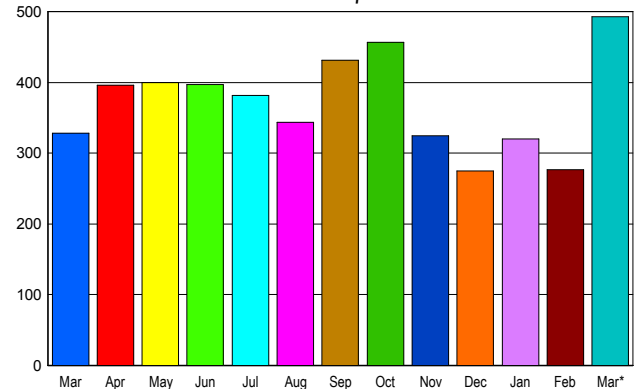
Prices Range	New This Month			Total Actives		
	2010	2009	% Change	2010	2009	% Change
0 - 149,999	72	37	94.6	153	142	7.7
150,000 - 199,999	48	40	20.0	110	156	-29.5
200,000 - 299,999	121	131	-7.6	247	376	-34.3
300,000 - 399,999	85	71	19.7	151	270	-44.1
400,000 - 499,999	60	56	7.1	106	143	-25.9
500,000 - 599,999	46	47	-2.1	62	86	-27.9
600,000 - 699,999	47	35	34.3	34	83	-59.0
700,000 - 799,999	46	49	-6.1	54	86	-37.2
800,000 - 899,999	29	35	-17.1	23	69	-66.7
900,000 - 999,999	28	17	64.7	43	48	-10.4
1,000,000 - 1,249,999	18	20	-10.0	37	49	-24.5
1,250,000 - 1,499,999	26	15	73.3	50	48	4.2
1,500,000 +	43	46	-6.5	138	184	-25.0
TOTALS	669	599	11.7	1208	1740	-30.6

INVENTORY TREND



SALES TREND

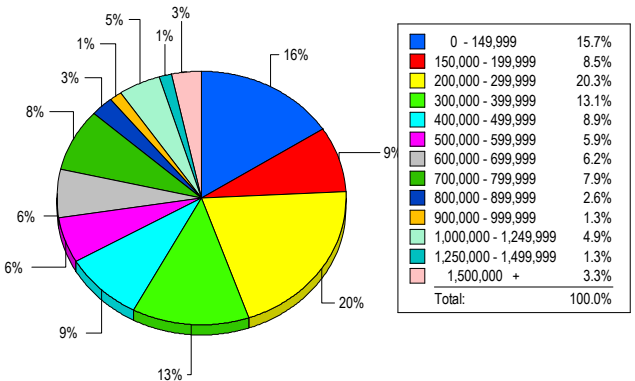
Contracts Ratified Per Month



CONTRACTS

Price Range	New This Month			Year-To-Date		
	2010	2009	% Change	2010	2009	% Change
0 - 149,999	62	35	77.1	146	81	80.2
150,000 - 199,999	48	18	166.7	97	58	67.2
200,000 - 299,999	99	60	65.0	231	141	63.8
300,000 - 399,999	53	37	43.2	128	116	10.3
400,000 - 499,999	41	38	7.9	90	78	15.4
500,000 - 599,999	28	33	-15.2	58	64	-9.4
600,000 - 699,999	41	31	32.3	76	57	33.3
700,000 - 799,999	37	23	60.9	64	44	45.5
800,000 - 899,999	21	13	61.5	40	33	21.2
900,000 - 999,999	11	9	22.2	19	22	-13.6
1,000,000 - 1,249,999	16	12	33.3	28	23	21.7
1,250,000 - 1,499,999	16	7	128.6	29	18	61.1
1,500,000 +	20	12	66.7	35	28	25.0
TOTALS	493	328	50.3	1041	763	36.4

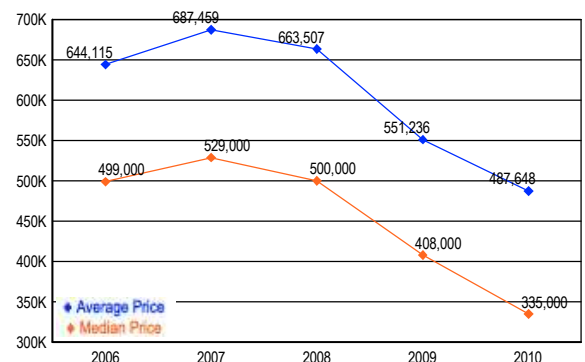
MARKET BY PRICE RANGE



SETTLEMENTS

Price Range	New This Month			Year-to-Date		
	2010	2009	% Change	2010	2009	% Change
0 - 149,999	48	13	269.2	117	48	143.8
150,000 - 199,999	26	15	73.3	61	42	45.2
200,000 - 299,999	62	36	72.2	157	109	44.0
300,000 - 399,999	40	36	11.1	96	99	-3.0
400,000 - 499,999	27	24	12.5	60	42	42.9
500,000 - 599,999	18	21	-14.3	49	40	22.5
600,000 - 699,999	19	12	58.3	43	32	34.4
700,000 - 799,999	24	11	118.2	49	31	58.1
800,000 - 899,999	8	8	0.0	28	17	64.7
900,000 - 999,999	4	9	-55.6	14	16	-12.5
1,000,000 - 1,249,999	15	8	87.5	24	17	41.2
1,250,000 - 1,499,999	4	6	-33.3	18	20	-10.0
1,500,000 +	10	5	100.0	26	20	30.0
TOTALS	305	204	49.5	742	533	39.2

AVERAGE & MEDIAN PRICE



DATA SOURCE: Metropolitan Regional Information Systems, Inc. (MRIS)

NOTES: Properties not listed through this Multiple Listing Service are not reflected. The term "sales" represents ratified purchase contracts. Current year information is preliminary and subject to revision. Current year- to- date contract information may not equal the sum of the monthly contract totals reported in