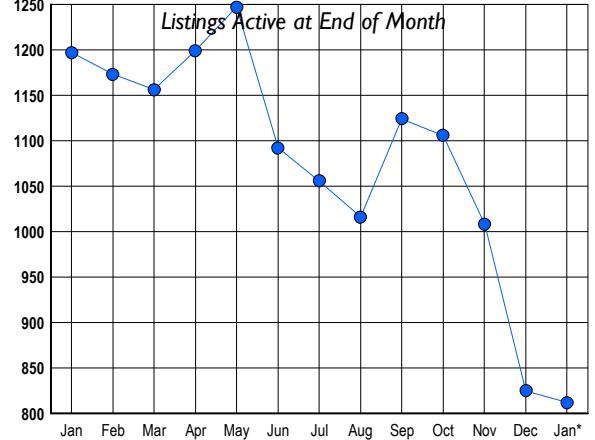




LISTINGS

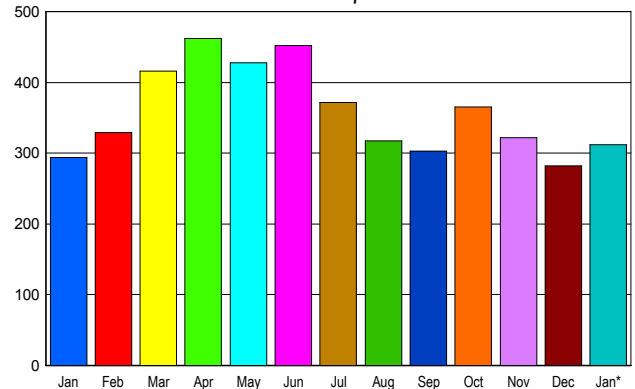
Prices Range	New This Month			Total Actives		
	2012	2011	% Change	2012	2011	% Change
0 - 149,999	28	51	-45.1	85	156	-45.5
150,000 - 199,999	23	45	-48.9	85	162	-47.5
200,000 - 299,999	66	58	13.8	135	201	-32.8
300,000 - 399,999	52	55	-5.5	107	178	-39.9
400,000 - 499,999	36	39	-7.7	68	116	-41.4
500,000 - 599,999	30	27	11.1	43	53	-18.9
600,000 - 699,999	22	22	0.0	25	31	-19.4
700,000 - 799,999	19	28	-32.1	28	53	-47.2
800,000 - 899,999	28	15	86.7	29	35	-17.1
900,000 - 999,999	11	13	-15.4	22	36	-38.9
1,000,000 - 1,249,999	16	11	45.5	36	31	16.1
1,250,000 - 1,499,999	14	10	40.0	23	34	-32.4
1,500,000 +	44	28	57.1	126	111	13.5
TOTALS	389	402	-3.2	812	1197	-32.2

INVENTORY TREND



SALES TREND

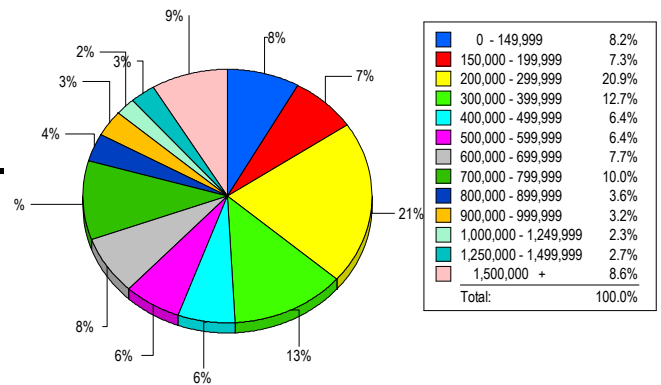
Contracts Ratified Per Month



CONTRACTS

Price Range	New This Month			Year-To-Date		
	2012	2011	% Change	2012	2011	% Change
0 - 149,999	32	49	-34.7	32	49	-34.7
150,000 - 199,999	28	33	-15.2	28	33	-15.2
200,000 - 299,999	60	51	17.6	60	51	17.6
300,000 - 399,999	33	43	-23.3	33	43	-23.3
400,000 - 499,999	35	23	52.2	35	23	52.2
500,000 - 599,999	26	20	30.0	26	20	30.0
600,000 - 699,999	23	17	35.3	23	17	35.3
700,000 - 799,999	25	15	66.7	25	15	66.7
800,000 - 899,999	14	12	16.7	14	12	16.7
900,000 - 999,999	3	5	-40.0	3	5	-40.0
1,000,000 - 1,249,999	4	6	-33.3	4	6	-33.3
1,250,000 - 1,499,999	10	5	100.0	10	5	100.0
1,500,000 +	19	15	26.7	19	15	26.7
TOTALS	312	294	6.1	312	294	6.1

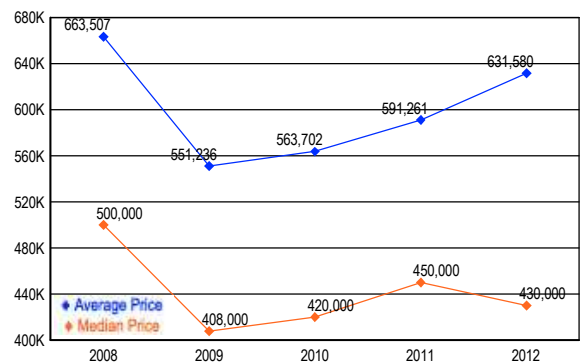
MARKET BY PRICE RANGE



SETTLEMENTS

Price Range	New This Month			Year-to-Date		
	2012	2011	% Change	2012	2011	% Change
0 - 149,999	18	38	-52.6	18	38	-52.6
150,000 - 199,999	16	17	-5.9	16	17	-5.9
200,000 - 299,999	46	27	70.4	46	27	70.4
300,000 - 399,999	28	36	-22.2	28	36	-22.2
400,000 - 499,999	14	18	-22.2	14	18	-22.2
500,000 - 599,999	14	12	16.7	14	12	16.7
600,000 - 699,999	17	25	-32.0	17	25	-32.0
700,000 - 799,999	22	18	22.2	22	18	22.2
800,000 - 899,999	8	12	-33.3	8	12	-33.3
900,000 - 999,999	7	5	40.0	7	5	40.0
1,000,000 - 1,249,999	5	10	-50.0	5	10	-50.0
1,250,000 - 1,499,999	6	4	50.0	6	4	50.0
1,500,000 +	19	11	72.7	19	11	72.7
TOTALS	220	233	-5.6	220	233	-5.6

AVERAGE & MEDIAN PRICE



DATA SOURCE: Metropolitan Regional Information Systems, Inc. (MRIS)

NOTES: Properties not listed through this Multiple Listing Service are not reflected. The term "sales" represents ratified purchase contracts. Current year information is preliminary and subject to revision. Current year- to- date contract information may not equal the sum of the monthly contract totals reported in