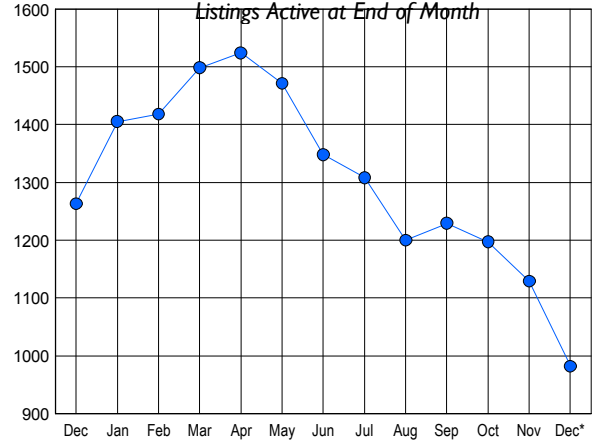


### LISTINGS

Price Range	New This Month			Total Actives		
	2009	2008	% Change	2009	2008	% Change
0 - 149,999	40	17	135.3	134	98	36.7
150,000 - 199,999	33	24	37.5	135	138	-2.2
200,000 - 299,999	52	49	6.1	189	293	-35.5
300,000 - 399,999	49	35	40.0	153	220	-30.5
400,000 - 499,999	26	37	-29.7	113	163	-30.7
500,000 - 599,999	13	16	-18.8	67	96	-30.2
600,000 - 699,999	8	14	-42.9	49	63	-22.2
700,000 - 799,999	6	6	0.0	34	47	-27.7
800,000 - 899,999	3	3	0.0	24	31	-22.6
900,000 - 999,999	0	7	-100.0	15	27	-44.4
1,000,000 - 1,249,999	1	4	-75.0	15	27	-44.4
1,250,000 - 1,499,999	2	2	0.0	14	17	-17.6
1,500,000 +	3	11	-72.7	40	43	-7.0
<b>TOTALS</b>	<b>236</b>	<b>225</b>	<b>4.9</b>	<b>982</b>	<b>1263</b>	<b>-22.2</b>

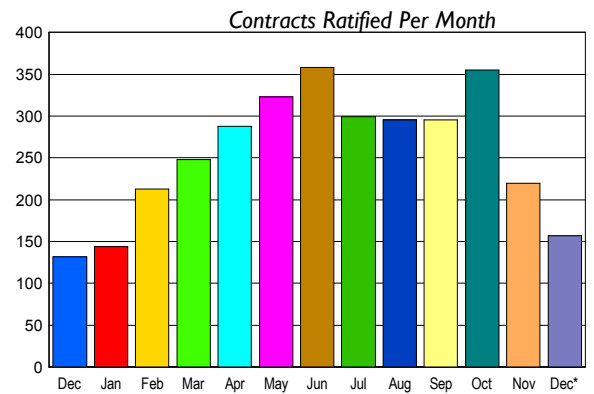
### INVENTORY TREND



### CONTRACTS

Price Range	New This Month			Year-To-Date		
	2009	2008	% Change	2009	2008	% Change
0 - 149,999	17	7	142.9	139	73	90.4
150,000 - 199,999	15	12	25.0	208	195	6.7
200,000 - 299,999	33	26	26.9	719	656	9.6
300,000 - 399,999	31	30	3.3	786	681	15.4
400,000 - 499,999	21	30	-30.0	494	479	3.1
500,000 - 599,999	14	11	27.3	284	259	9.7
600,000 - 699,999	7	8	-12.5	156	131	19.1
700,000 - 799,999	7	2	250.0	73	72	1.4
800,000 - 899,999	1	3	-66.7	42	34	23.5
900,000 - 999,999	0	1	-100.0	31	20	55.0
1,000,000 - 1,249,999	2	0	200.0	29	18	61.1
1,250,000 - 1,499,999	5	0	500.0	21	17	23.5
1,500,000 +	4	2	100.0	34	23	47.8
<b>TOTALS</b>	<b>157</b>	<b>132</b>	<b>18.9</b>	<b>3016</b>	<b>2658</b>	<b>13.5</b>

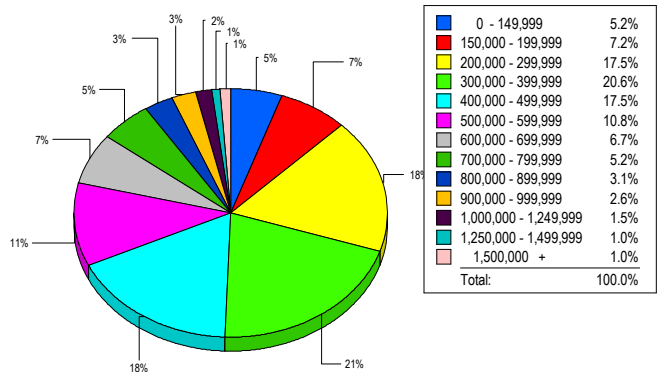
### SALES TREND



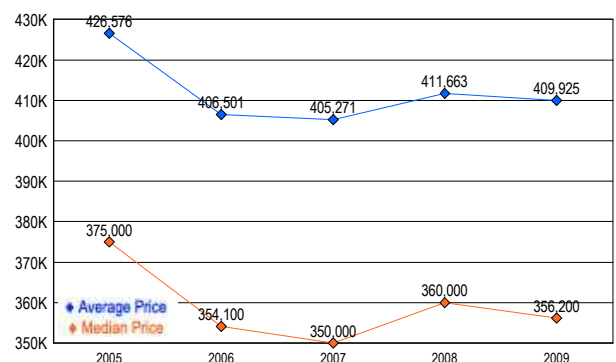
### SETTLEMENTS

Price Range	New This Month			Year-To-Date		
	2009	2008	% Change	2009	2008	% Change
0 - 149,999	10	9	11.1	113	68	66.2
150,000 - 199,999	14	20	-30.0	203	195	4.1
200,000 - 299,999	34	46	-26.1	672	645	4.2
300,000 - 399,999	40	39	2.6	780	691	12.9
400,000 - 499,999	34	36	-5.6	453	464	-2.4
500,000 - 599,999	21	16	31.3	286	253	13.0
600,000 - 699,999	13	8	62.5	148	144	2.8
700,000 - 799,999	10	0	1000.0	68	67	1.5
800,000 - 899,999	6	1	500.0	51	33	54.5
900,000 - 999,999	5	2	150.0	27	16	68.8
1,000,000 - 1,249,999	3	2	50.0	20	21	-4.8
1,250,000 - 1,499,999	2	0	200.0	17	18	-5.6
1,500,000 +	2	0	200.0	30	25	20.0
<b>TOTALS</b>	<b>194</b>	<b>179</b>	<b>8.4</b>	<b>2868</b>	<b>2640</b>	<b>8.6</b>

### MARKET BY PRICE RANGE



### AVERAGE & MEDIAN PRICE



DATA SOURCE: Metropolitan Regional Information Systems, Inc. (MRIS)

NOTES: Properties not listed through this Multiple Listing Service are not reflected. The term "sales" represents ratified purchase contracts. Current year information is preliminary and subject to revision. Current year-to-date contract information may not equal the sum of the monthly contract totals reported in