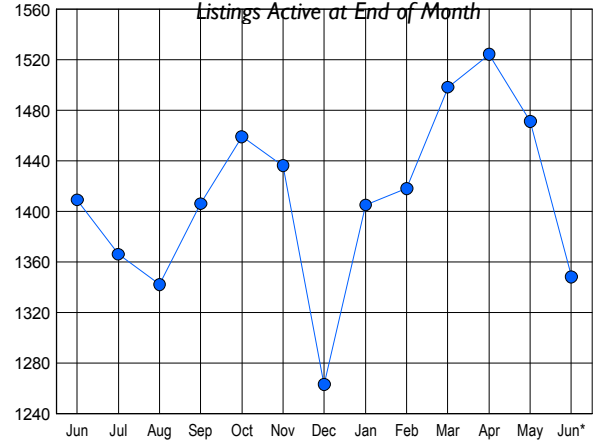


LISTINGS

Price Range	New This Month			Total Actives		
	2009	2008	% Change	2009	2008	% Change
0 - 149,999	30	10	200.0	126	84	50.0
150,000 - 199,999	50	37	35.1	154	195	-21.0
200,000 - 299,999	132	110	20.0	276	343	-19.5
300,000 - 399,999	118	101	16.8	220	249	-11.6
400,000 - 499,999	60	75	-20.0	204	195	4.6
500,000 - 599,999	41	56	-26.8	111	120	-7.5
600,000 - 699,999	18	21	-14.3	73	66	10.6
700,000 - 799,999	8	13	-38.5	35	44	-20.5
800,000 - 899,999	7	9	-22.2	36	28	28.6
900,000 - 999,999	2	7	-71.4	24	24	0.0
1,000,000 - 1,249,999	3	3	0.0	26	20	30.0
1,250,000 - 1,499,999	7	4	75.0	21	16	31.3
1,500,000 +	13	7	85.7	42	25	68.0
TOTALS	489	453	7.9	1348	1409	-4.3

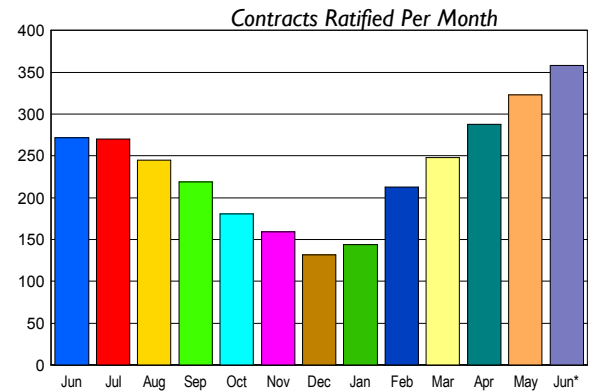
INVENTORY TREND



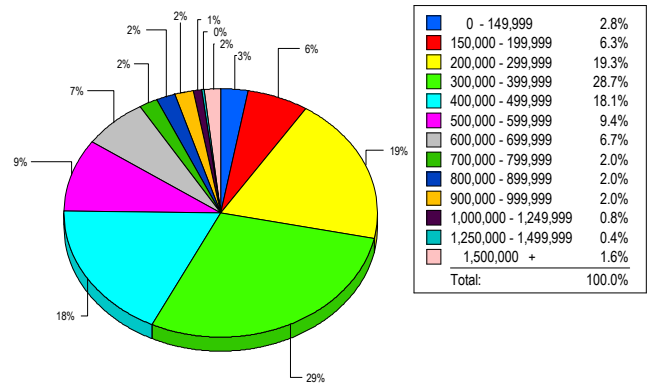
CONTRACTS

Price Range	New This Month			Year-To-Date		
	2009	2008	% Change	2009	2008	% Change
0 - 149,999	12	9	33.3	60	37	62.2
150,000 - 199,999	28	14	100.0	97	98	-1.0
200,000 - 299,999	92	61	50.8	363	373	-2.7
300,000 - 399,999	98	72	36.1	423	391	8.2
400,000 - 499,999	55	59	-6.8	248	279	-11.1
500,000 - 599,999	33	28	17.9	133	162	-17.9
600,000 - 699,999	11	15	-26.7	69	79	-12.7
700,000 - 799,999	8	6	33.3	35	39	-10.3
800,000 - 899,999	6	2	200.0	21	14	50.0
900,000 - 999,999	2	0	200.0	15	10	50.0
1,000,000 - 1,249,999	5	2	150.0	17	14	21.4
1,250,000 - 1,499,999	1	1	0.0	10	7	42.9
1,500,000 +	7	3	133.3	21	9	133.3
TOTALS	358	272	31.6	1512	1512	0.0

SALES TREND



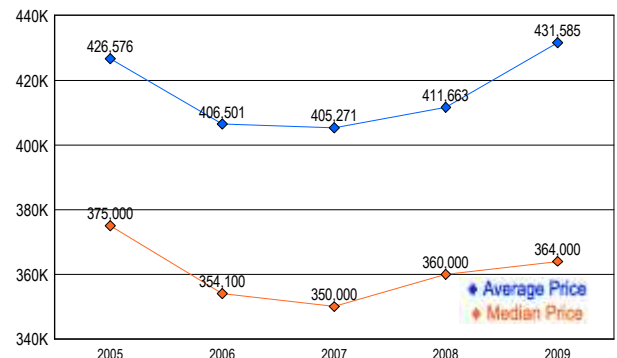
MARKET BY PRICE RANGE



SETTLEMENTS

Price Range	New This Month			Year-To-Date		
	2009	2008	% Change	2009	2008	% Change
0 - 149,999	7	6	16.7	36	34	5.9
150,000 - 199,999	16	9	77.8	74	91	-18.7
200,000 - 299,999	49	58	-15.5	233	324	-28.1
300,000 - 399,999	73	68	7.4	306	346	-11.6
400,000 - 499,999	46	48	-4.2	181	228	-20.6
500,000 - 599,999	24	27	-11.1	109	138	-21.0
600,000 - 699,999	17	17	0.0	58	77	-24.7
700,000 - 799,999	5	3	66.7	24	34	-29.4
800,000 - 899,999	5	3	66.7	21	17	23.5
900,000 - 999,999	5	1	400.0	8	7	14.3
1,000,000 - 1,249,999	2	1	100.0	7	13	-46.2
1,250,000 - 1,499,999	1	2	-50.0	11	6	83.3
1,500,000 +	4	4	0.0	16	9	77.8
TOTALS	254	247	2.8	1084	1324	-18.1

AVERAGE & MEDIAN PRICE



DATA SOURCE: Metropolitan Regional Information Systems, Inc. (MRIS)

NOTES: Properties not listed through this Multiple Listing Service are not reflected. The term "sales" represents ratified purchase contracts. Current year information is preliminary and subject to revision. Current year- to- date contract information may not equal the sum of the monthly contract totals reported in