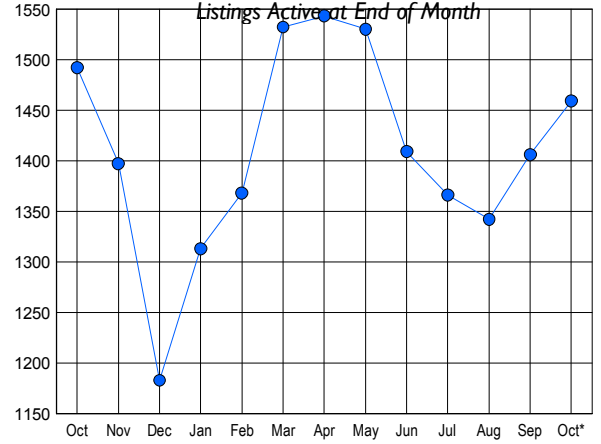


### LISTINGS

Price Range	New This Month			Total Actives		
	2008	2007	% Change	2008	2007	% Change
0 - 149,999	18	16	12.5	108	60	80.0
150,000 - 199,999	29	55	-47.3	156	211	-26.1
200,000 - 299,999	95	134	-29.1	339	336	0.9
300,000 - 399,999	112	138	-18.8	262	284	-7.7
400,000 - 499,999	67	95	-29.5	198	210	-5.7
500,000 - 599,999	35	58	-39.7	124	145	-14.5
600,000 - 699,999	29	27	7.4	75	83	-9.6
700,000 - 799,999	14	21	-33.3	50	55	-9.1
800,000 - 899,999	12	8	50.0	36	20	80.0
900,000 - 999,999	9	8	12.5	33	20	65.0
1,000,000 - 1,249,999	8	9	-11.1	24	22	9.1
1,250,000 - 1,499,999	3	6	-50.0	18	11	63.6
1,500,000 +	13	6	116.7	36	35	2.9
<b>TOTALS</b>	<b>444</b>	<b>581</b>	<b>-23.6</b>	<b>1459</b>	<b>1492</b>	<b>-2.2</b>

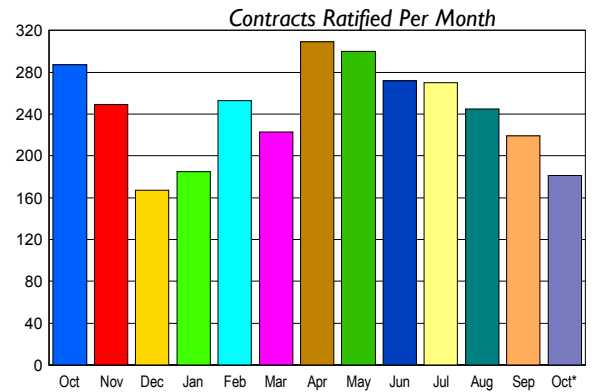
### INVENTORY TREND



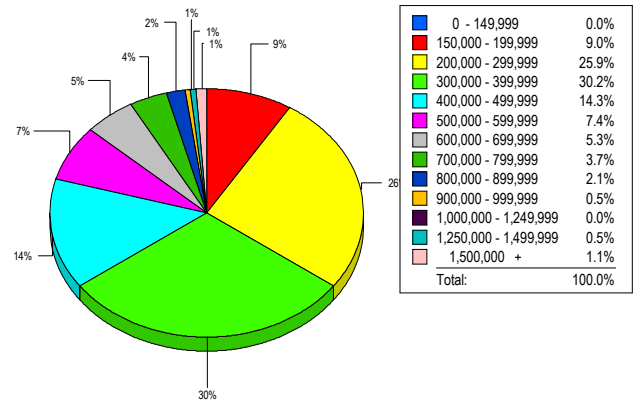
### CONTRACTS

Price Range	New This Month			Year-To-Date		
	2008	2007	% Change	2008	2007	% Change
0 - 149,999	8	8	0.0	56	97	-42.3
150,000 - 199,999	15	16	-6.3	164	329	-50.2
200,000 - 299,999	42	89	-52.8	599	856	-30.0
300,000 - 399,999	48	66	-27.3	620	856	-27.6
400,000 - 499,999	36	41	-12.2	421	546	-22.9
500,000 - 599,999	12	29	-58.6	230	323	-28.8
600,000 - 699,999	12	15	-20.0	120	149	-19.5
700,000 - 799,999	5	5	0.0	68	92	-26.1
800,000 - 899,999	1	6	-83.3	30	47	-36.2
900,000 - 999,999	1	0	100.0	15	29	-48.3
1,000,000 - 1,249,999	0	5	-100.0	14	30	-53.3
1,250,000 - 1,499,999	0	3	-100.0	16	27	-40.7
1,500,000 +	1	4	-75.0	20	28	-28.6
<b>TOTALS</b>	<b>181</b>	<b>287</b>	<b>-36.9</b>	<b>2373</b>	<b>3409</b>	<b>-30.4</b>

### SALES TREND



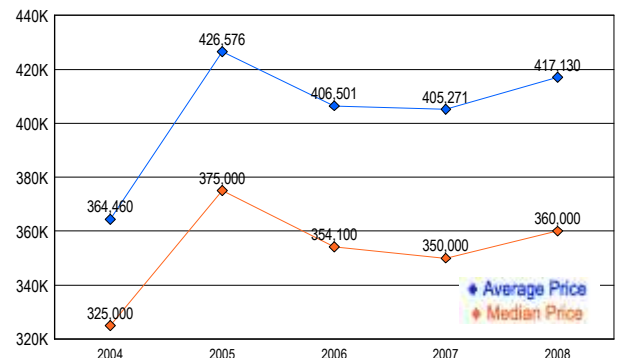
### MARKET BY PRICE RANGE



### SETTLEMENTS

Price Range	New This Month			Year-To-Date		
	2008	2007	% Change	2008	2007	% Change
0 - 149,999	0	6	-100.0	50	90	-44.4
150,000 - 199,999	17	14	21.4	163	348	-53.2
200,000 - 299,999	49	64	-23.4	559	781	-28.4
300,000 - 399,999	57	69	-17.4	612	860	-28.8
400,000 - 499,999	27	27	0.0	396	515	-23.1
500,000 - 599,999	14	17	-17.6	215	325	-33.8
600,000 - 699,999	10	10	0.0	128	152	-15.8
700,000 - 799,999	7	10	-30.0	67	94	-28.7
800,000 - 899,999	4	2	100.0	31	50	-38.0
900,000 - 999,999	1	5	-80.0	11	36	-69.4
1,000,000 - 1,249,999	0	1	-100.0	18	29	-37.9
1,250,000 - 1,499,999	1	1	0.0	17	27	-37.0
1,500,000 +	2	0	200.0	24	27	-11.1
<b>TOTALS</b>	<b>189</b>	<b>226</b>	<b>-16.4</b>	<b>2291</b>	<b>3334</b>	<b>-31.3</b>

### AVERAGE & MEDIAN PRICE



DATA SOURCE: Metropolitan Regional Information Systems, Inc. (MRIS)

NOTES: Properties not listed through this Multiple Listing Service are not reflected. The term "sales" represents ratified purchase contracts. Current year information is preliminary and subject to revision. Current year-to-date contract information may not equal the sum of the monthly contract totals reported in