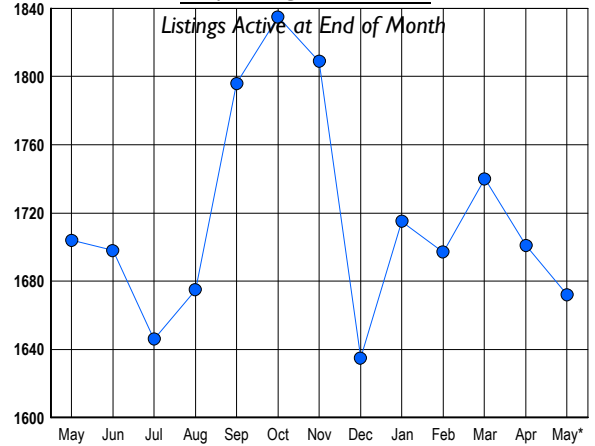




LISTINGS

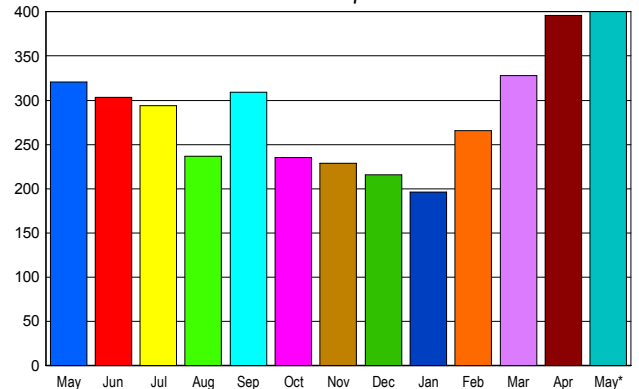
Prices Range	New This Month			Total Actives		
	2009	2008	% Change	2009	2008	% Change
0 - 149,999	30	5	500.0	152	28	442.9
150,000 - 199,999	47	26	80.8	161	78	106.4
200,000 - 299,999	79	86	-8.1	323	312	3.5
300,000 - 399,999	74	105	-29.5	241	391	-38.4
400,000 - 499,999	59	88	-33.0	134	283	-52.7
500,000 - 599,999	46	46	0.0	85	154	-44.8
600,000 - 699,999	34	40	-15.0	70	84	-16.7
700,000 - 799,999	37	30	23.3	72	73	-1.4
800,000 - 899,999	36	33	9.1	71	60	18.3
900,000 - 999,999	28	25	12.0	44	37	18.9
1,000,000 - 1,249,999	23	20	15.0	52	39	33.3
1,250,000 - 1,499,999	32	21	52.4	72	47	53.2
1,500,000 +	40	40	0.0	195	118	65.3
TOTALS	565	565	0.0	1672	1704	-1.9

INVENTORY TREND



SALES TREND

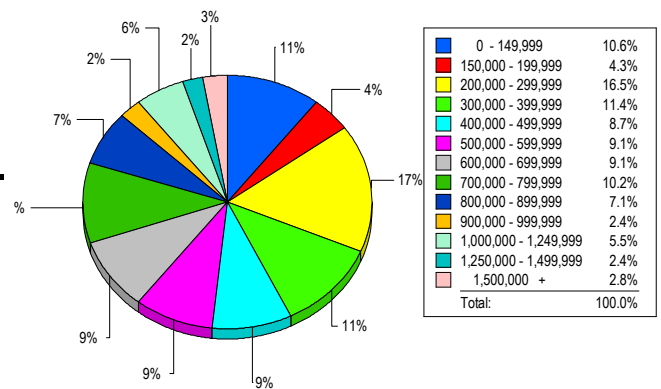
Contracts Ratified Per Month



CONTRACTS

Price Range	New This Month			Year-To-Date		
	2009	2008	% Change	2009	2008	% Change
0 - 149,999	36	3	1,100.0	136	14	871.4
150,000 - 199,999	32	11	190.9	118	42	181.0
200,000 - 299,999	61	51	19.6	259	206	25.7
300,000 - 399,999	43	59	-27.1	193	238	-18.9
400,000 - 499,999	43	28	53.6	159	136	16.9
500,000 - 599,999	34	25	36.0	122	119	2.5
600,000 - 699,999	33	30	10.0	118	123	-4.1
700,000 - 799,999	40	30	33.3	109	110	-0.9
800,000 - 899,999	24	19	26.3	82	89	-7.9
900,000 - 999,999	18	20	-10.0	51	65	-21.5
1,000,000 - 1,249,999	19	18	5.6	56	55	1.8
1,250,000 - 1,499,999	7	10	-30.0	37	53	-30.2
1,500,000 +	10	17	-41.2	53	87	-39.1
TOTALS	400	321	24.6	1493	1337	11.7

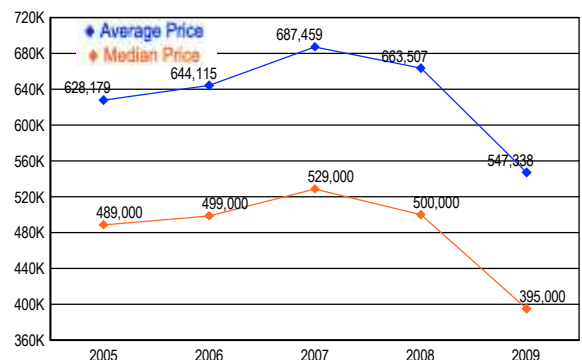
MARKET BY PRICE RANGE



SETTLEMENTS

Price Range	New This Month			Year-to-Date		
	2009	2008	% Change	2009	2008	% Change
0 - 149,999	27	1	2,600.0	102	17	500.0
150,000 - 199,999	11	4	175.0	73	25	192.0
200,000 - 299,999	42	28	50.0	200	147	36.1
300,000 - 399,999	29	46	-37.0	173	187	-7.5
400,000 - 499,999	22	30	-26.7	90	114	-21.1
500,000 - 599,999	23	22	4.5	88	99	-11.1
600,000 - 699,999	23	25	-8.0	81	94	-13.8
700,000 - 799,999	26	20	30.0	72	87	-17.2
800,000 - 899,999	18	17	5.9	46	73	-37.0
900,000 - 999,999	6	10	-40.0	33	40	-17.5
1,000,000 - 1,249,999	14	19	-26.3	37	63	-41.3
1,250,000 - 1,499,999	6	5	20.0	28	30	-6.7
1,500,000 +	7	21	-66.7	41	75	-45.3
TOTALS	254	248	2.4	1064	1051	1.2

AVERAGE & MEDIAN PRICE



DATA SOURCE: Metropolitan Regional Information Systems, Inc. (MRIS)

NOTES: Properties not listed through this Multiple Listing Service are not reflected. The term "sales" represents ratified purchase contracts. Current year information is preliminary and subject to revision. Current year-to-date contract information may not equal the sum of the monthly contract totals reported in