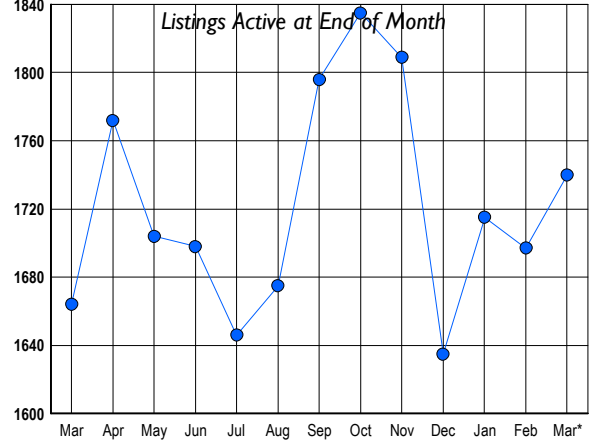




LISTINGS

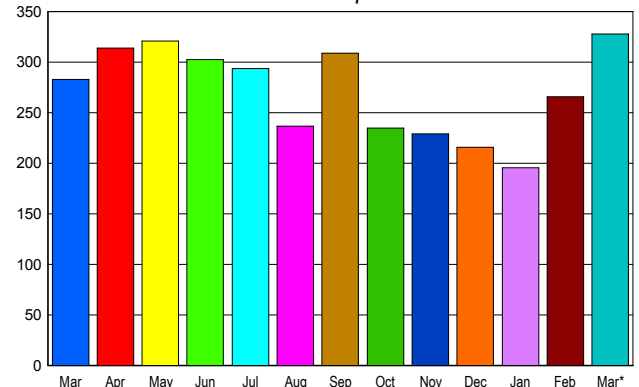
Prices Range	New This Month			Total Actives		
	2009	2008	% Change	2009	2008	% Change
0 - 149,999	37	8	362.5	142	21	576.2
150,000 - 199,999	40	21	90.5	156	63	147.6
200,000 - 299,999	131	77	70.1	376	283	32.9
300,000 - 399,999	71	105	-32.4	270	402	-32.8
400,000 - 499,999	56	99	-43.4	143	289	-50.5
500,000 - 599,999	47	57	-17.5	86	159	-45.9
600,000 - 699,999	35	47	-25.5	83	84	-1.2
700,000 - 799,999	49	36	36.1	86	56	53.6
800,000 - 899,999	35	29	20.7	69	63	9.5
900,000 - 999,999	17	23	-26.1	48	39	23.1
1,000,000 - 1,249,999	20	10	100.0	49	40	22.5
1,250,000 - 1,499,999	15	15	0.0	48	38	26.3
1,500,000 +	46	39	17.9	184	127	44.9
TOTALS	599	566	5.8	1740	1664	4.6

INVENTORY TREND



SALES TREND

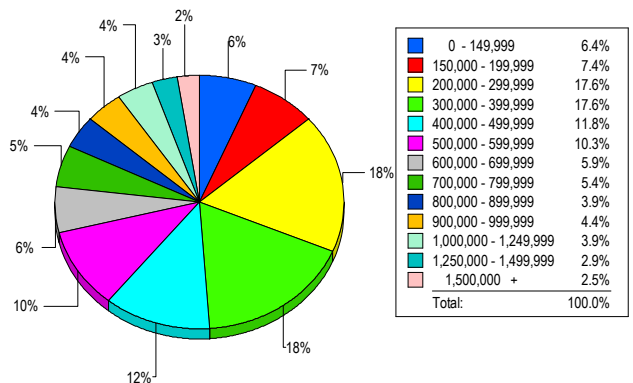
Contracts Ratified Per Month



CONTRACTS

Price Range	New This Month			Year-To-Date		
	2009	2008	% Change	2009	2008	% Change
0 - 149,999	35	5	600.0	81	13	523.1
150,000 - 199,999	18	8	125.0	58	25	132.0
200,000 - 299,999	60	37	62.2	141	121	16.5
300,000 - 399,999	37	48	-22.9	116	119	-2.5
400,000 - 499,999	38	43	-11.6	78	79	-1.3
500,000 - 599,999	33	27	22.2	64	68	-5.9
600,000 - 699,999	31	25	24.0	57	66	-13.6
700,000 - 799,999	23	23	0.0	44	52	-15.4
800,000 - 899,999	13	15	-13.3	33	48	-31.3
900,000 - 999,999	9	15	-40.0	22	30	-26.7
1,000,000 - 1,249,999	12	8	50.0	23	27	-14.8
1,250,000 - 1,499,999	7	11	-36.4	18	29	-37.9
1,500,000 +	12	18	-33.3	28	49	-42.9
TOTALS	328	283	15.9	763	726	5.1

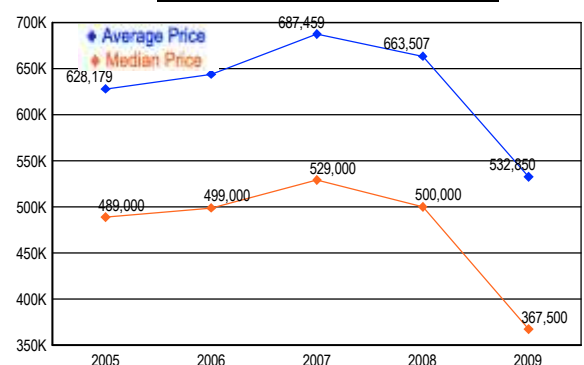
MARKET BY PRICE RANGE



SETTLEMENTS

Price Range	New This Month			Year-to-Date		
	2009	2008	% Change	2009	2008	% Change
0 - 149,999	13	7	85.7	48	13	269.2
150,000 - 199,999	15	7	114.3	42	14	200.0
200,000 - 299,999	36	22	63.6	109	82	32.9
300,000 - 399,999	36	32	12.5	99	95	4.2
400,000 - 499,999	24	14	71.4	42	55	-23.6
500,000 - 599,999	21	14	50.0	40	49	-18.4
600,000 - 699,999	12	22	-45.5	32	52	-38.5
700,000 - 799,999	11	19	-42.1	31	50	-38.0
800,000 - 899,999	8	17	-52.9	17	39	-56.4
900,000 - 999,999	9	3	200.0	16	17	-5.9
1,000,000 - 1,249,999	8	9	-11.1	17	34	-50.0
1,250,000 - 1,499,999	6	5	20.0	20	17	17.6
1,500,000 +	5	12	-58.3	20	34	-41.2
TOTALS	204	183	11.5	533	551	-3.3

AVERAGE & MEDIAN PRICE



DATA SOURCE: Metropolitan Regional Information Systems, Inc. (MRIS)

NOTES: Properties not listed through this Multiple Listing Service are not reflected. The term "sales" represents ratified purchase contracts. Current year information is preliminary and subject to revision. Current year-to-date contract information may not equal the sum of the monthly contract totals reported in