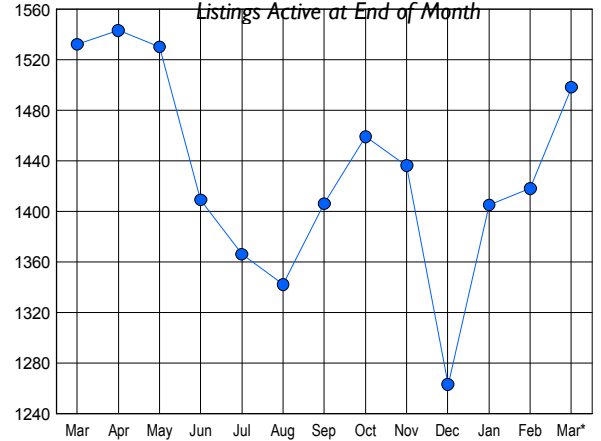


### LISTINGS

Price Range	New This Month			Total Actives		
	2009	2008	% Change	2009	2008	% Change
0 - 149,999	17	11	54.5	114	70	62.9
150,000 - 199,999	51	30	70.0	183	212	-13.7
200,000 - 299,999	109	111	-1.8	320	349	-8.3
300,000 - 399,999	118	143	-17.5	270	312	-13.5
400,000 - 499,999	85	85	0.0	198	221	-10.4
500,000 - 599,999	45	64	-29.7	136	143	-4.9
600,000 - 699,999	27	34	-20.6	72	77	-6.5
700,000 - 799,999	15	23	-34.8	41	49	-16.3
800,000 - 899,999	15	8	87.5	40	23	73.9
900,000 - 999,999	6	4	50.0	31	21	47.6
1,000,000 - 1,249,999	3	6	-50.0	30	14	114.3
1,250,000 - 1,499,999	4	7	-42.9	16	13	23.1
1,500,000 +	11	7	57.1	47	28	67.9
<b>TOTALS</b>	<b>506</b>	<b>533</b>	<b>-5.1</b>	<b>1498</b>	<b>1532</b>	<b>-2.2</b>

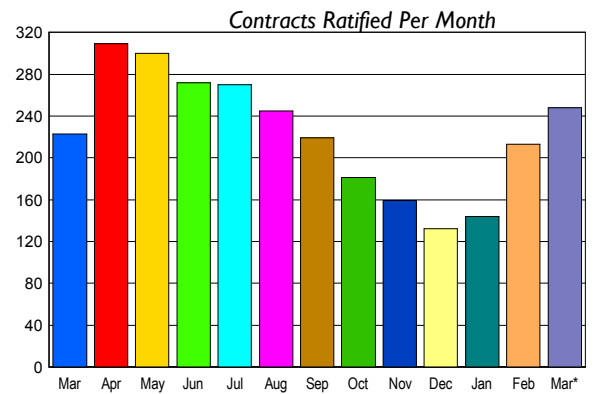
### INVENTORY TREND



### CONTRACTS

Price Range	New This Month			Year-To-Date		
	2009	2008	% Change	2009	2008	% Change
0 - 149,999	8	7	14.3	22	19	15.8
150,000 - 199,999	19	14	35.7	36	52	-30.8
200,000 - 299,999	52	58	-10.3	137	168	-18.5
300,000 - 399,999	76	62	22.6	172	168	2.4
400,000 - 499,999	38	36	5.6	95	118	-19.5
500,000 - 599,999	19	19	0.0	49	66	-25.8
600,000 - 699,999	11	9	22.2	24	27	-11.1
700,000 - 799,999	9	6	50.0	15	14	7.1
800,000 - 899,999	3	4	-25.0	10	5	100.0
900,000 - 999,999	3	4	-25.0	8	7	14.3
1,000,000 - 1,249,999	2	2	0.0	5	4	25.0
1,250,000 - 1,499,999	3	0	300.0	6	3	100.0
1,500,000 +	5	2	150.0	11	3	266.7
<b>TOTALS</b>	<b>248</b>	<b>223</b>	<b>11.2</b>	<b>590</b>	<b>654</b>	<b>-9.8</b>

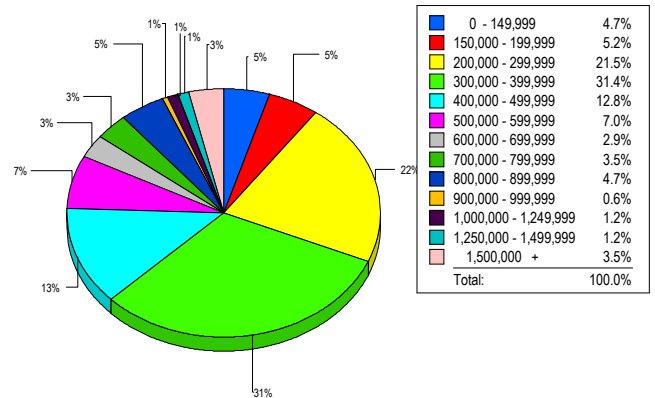
### SALES TREND



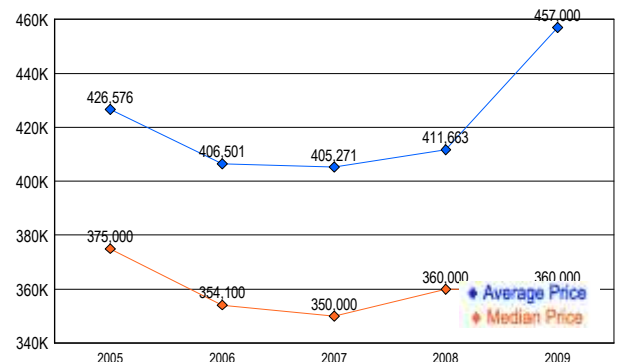
### SETTLEMENTS

Price Range	New This Month			Year-To-Date		
	2009	2008	% Change	2009	2008	% Change
0 - 149,999	8	3	166.7	14	19	-26.3
150,000 - 199,999	9	10	-10.0	24	42	-42.9
200,000 - 299,999	37	55	-32.7	92	140	-34.3
300,000 - 399,999	54	51	5.9	111	134	-17.2
400,000 - 499,999	22	35	-37.1	64	104	-38.5
500,000 - 599,999	12	15	-20.0	37	49	-24.5
600,000 - 699,999	5	7	-28.6	14	30	-53.3
700,000 - 799,999	6	2	200.0	9	13	-30.8
800,000 - 899,999	8	1	700.0	12	3	300.0
900,000 - 999,999	1	1	0.0	2	2	0.0
1,000,000 - 1,249,999	2	2	0.0	3	5	-40.0
1,250,000 - 1,499,999	2	1	100.0	4	2	100.0
1,500,000 +	6	1	500.0	10	3	233.3
<b>TOTALS</b>	<b>172</b>	<b>184</b>	<b>-6.5</b>	<b>396</b>	<b>546</b>	<b>-27.5</b>

### MARKET BY PRICE RANGE



### AVERAGE & MEDIAN PRICE



DATA SOURCE: Metropolitan Regional Information Systems, Inc. (MRIS)

NOTES: Properties not listed through this Multiple Listing Service are not reflected. The term "sales" represents ratified purchase contracts. Current year information is preliminary and subject to revision. Current year-to-date contract information may not equal the sum of the monthly contract totals reported in